

Spertus Institute of Jewish Studies
Chicago, Illinois

CASE STUDY | cultural venues



Client - Spertus Jewish Institute
Rep Office - Air Products Equipment Company
Architect - Krueck & Sexton Architects
LEED Certification - LEED Silver Certified

Project Highlights:

- » 145,000 square feet of new and renovated space
- » Sustainable design elements incorporated into the design
- » Chicago's first "green" museum
- » 726 individual panes of glass / 556 different shapes
- » Opened in 2007



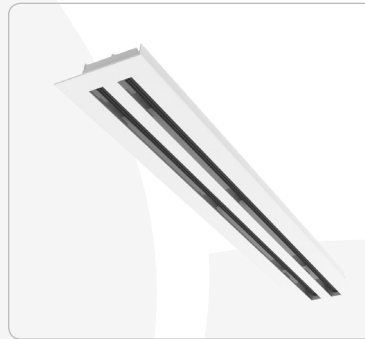
ABOUT THE PROJECT

The Spertus Institute of Jewish Studies is deeply rooted in Jewish values and invites people of all ages and backgrounds to explore the multi-faceted Jewish experience. Through its innovative programs and facilities, Spertus inspires learning and fosters understanding for Jews and people of all religious faiths from around the world. The new facility for Spertus is a mixed-use program containing exhibition galleries, a library, a 400-seat multi-use auditorium and much more.

Designed by the award-winning architectural firm of Krueck + Sexton Architects, this LEED Silver Certified building is an innovative and environmentally sustainable facility that features interconnected interior spaces and a one-of-a-kind, ten-story faceted window that provides spectacular views of the Chicago skyline. A 6,700 square foot green roof - planted with special vegetation - manages storm water, absorbs air pollution and helps keep the building cool in the summer. The glass wall is built from over 700 individual pieces of glass in 556 different shapes. Thanks to recent advancements in technology, it was possible to delineate and engineer a glass shape as complex as the ones used in the glass wall of the Spertus building.

THE TITUS SOLUTION

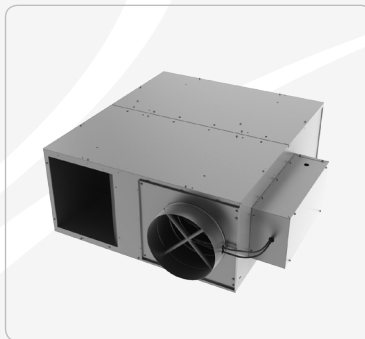
The Titus products selected for this project were the ML linear slot ceiling



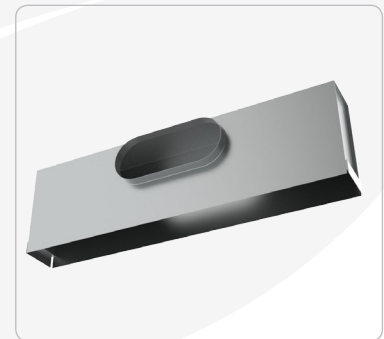
ML



R-OMNI



DTQS



MPI



diffuser, the DTQS fan powered terminal, the R-OMNI ceiling diffuser, and the MPI plenum. The Titus ML Modulinear diffuser is a high performance diffuser that utilizes uniquely designed "ice tong" deflector blades. These deflector blades allow for both changes in the air volume and direction from the face of the diffuser by gradually moving the pattern controllers. ML diffusers are designed for variable air volume systems (VAV) and project a uniform blanket of air that adheres to the ceiling even at low flow rates.

The DTQS is a fan powered terminal unit that provides constant air and blends the temperature well while maintaining the variable air volume energy savings at the central fan. The MPI plenum is an insulated plenum that utilizes the Modulinear diffuser's excellent VAV performance to keep the air on the ceiling in a tight horizontal pattern. The R-OMNI's smooth face is adjustable in three positions for horizontal or vertical airflow. It can be used effectively in heating or cooling applications.

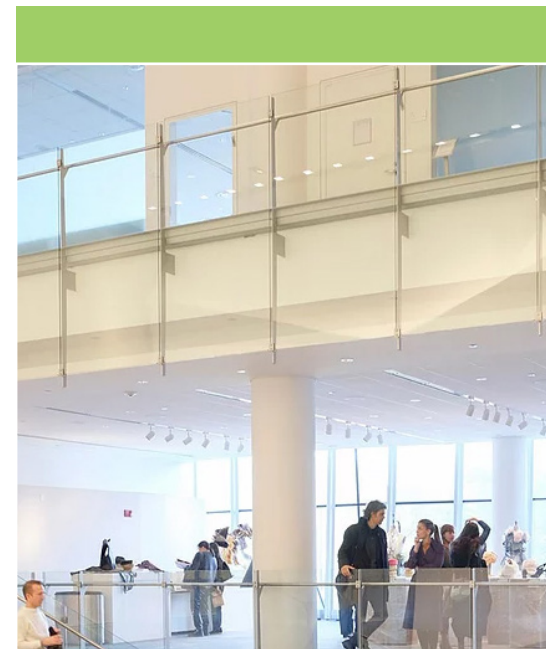
THE END RESULT

The Spertus Building is an amazing blend of Green Building concepts that maintains the respect for the period in which it was constructed. Originally constructed in the period after the Chicago fire, this building creates an interesting dynamic that harmonizes with the surrounding buildings.

Even though the glass facade is huge collectively, individually they are the same size as the other buildings on Michigan Avenue. The glass facade also consistently allows natural light to penetrate from several angles and expands the views of the interior. This emphasis on light echoes the logo of Spertus - a flame accompanied by the biblical phrase yehi meaning "let there be light." This symbolizes both physical light and the light of learning. The building has also received numerous accolades since opening its door in 2007. It has been honored with the following:

- » LEED-NC Silver
- » Patron of the Year, 2007 - CAF
- » Building Award, 2008 - AIA Chicago Chapter
- » Divine Detail Award, 2008 - AIA Chicago Chapter
- » Building of the Year, 2008 - Interior Design Magazine

Today, Spertus is powered exclusively by renewable energy. Over the course of three years, this process will reduce the CO² level by 6,200 tons from entering Earth's atmosphere. It also saves 40 tons of waste from entering landfills through recycling initiatives each year. Spertus continues to do its part in healing the world and hopes others will follow suit for future generations.





605 Shiloh Road
Plano TX 75074
ofc: 972.212.4800
fax: 972.212.4884

Redefine your comfort zone.™ | www.titus-hvac.com

 **Titus**
Redefine your comfort zone.™