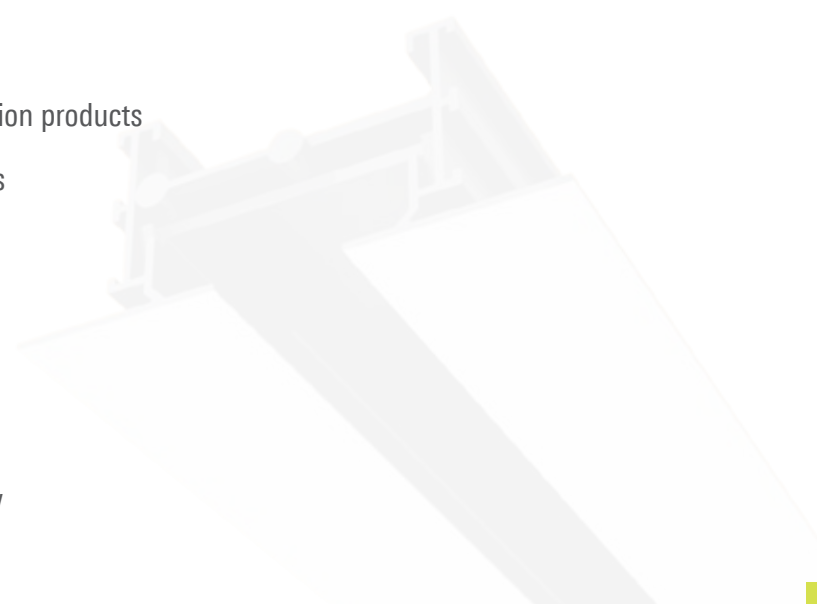




# *architectural products*



04	omni
06	spectrum
08	flowbar
10	ct
12	ml
14	woodgrain finishes
15	finishes
16	frameless border options
17	ml-tz / fl-tz
18	displacement ventilation products
20	chilled beam products
22	tsw
23	omni-rs
24	r-omni
25	dat
26	modubloc / moduflow



Why has Titus been the leading innovator in the HVAC industry for over 60 years? We pride ourselves on forecasting the ever changing commercial market and creating solutions ahead of your needs. Our experienced staff of knowledgeable and proven industry professionals has a long history of providing quality products that have stood the test of time and become the benchmark for the market today.

We offer architecturally relevant solutions that work in many different applications, and Titus' architectural diffusers have been featured in many high profile projects around the world. Our products are engineered to maximize performance without sacrificing the aesthetic of your design. Whether the application is linear, variable air volume, modular, or energy conscious, Titus has the architectural products to compliment your design and provide optimal performance and comfort.

# OMNI

## OMNI

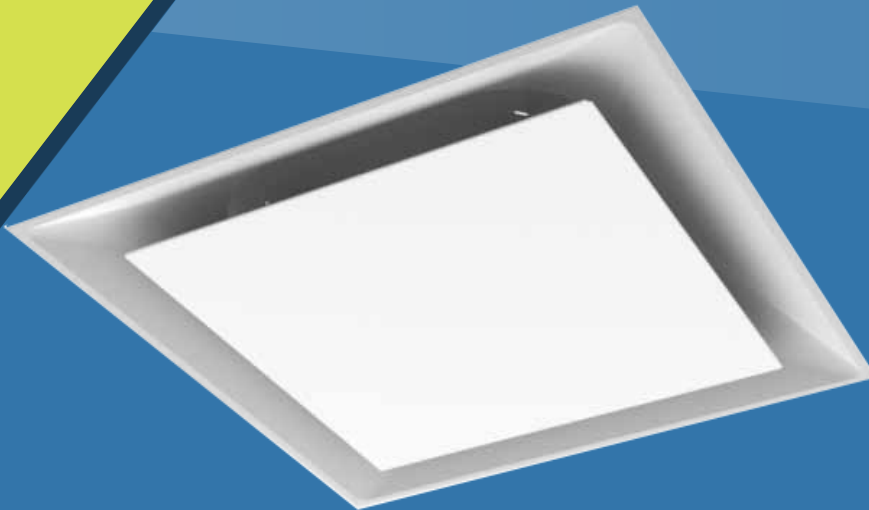
---

The Titus OMNI is a steel plaque face diffuser that satisfies architectural and engineering criteria. Its strong, clean, unobtrusive lines harmonize with the ceiling system without sacrificing performance. The curvature of the OMNI backpan works with the formed edges of the face panel to deliver a uniform 360 degree horizontal air pattern, without excessive noise or pressure drop. It is an excellent selection for variable air volume systems.

## FEATURES

---

- Border styles compatible with Armstrong®, Optima Vector, HunterDouglas, and Techstyle® are also available.
- The formed edges of the face panel capture an additional heavy gauge steel or aluminum panel providing the OMNI with durability and a clean, smooth face under any lighting conditions.
- The OMNI-AA is entirely constructed of aluminum, perfect for MRI applications.



## Architectural Products



### Available Models:

- OMNI
- OMNI-AA
- OMNI-NT
- OMNI-AA-NT



# SPECTRUM

## SPECTRUM

---

The Spectrum diffuser offers a unique alternative for architectural building applications. The Spectrum's design includes a special arcuate face with center appliqué. The versatility of the different color schemes provides the architect with a multitude of design options to compliment and enhance a building's décor.

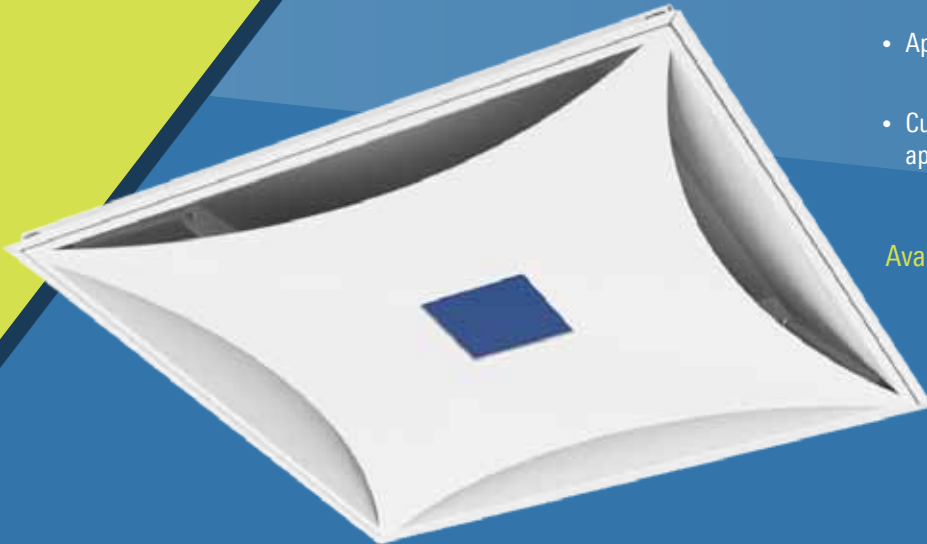
## FEATURES

---

- Excellent selection for VAV systems. The 4-way air pattern remains tight and horizontal even when the air volume varies over a wide range.
- Hinged removable faceplate sold separately for retrofit of existing Titus perforated diffusers without removal of backpan or ductwork.
- Appliqués are available in 9 standard colors.
- Custom color match or company logo appliqués are also available.

### Available Model:

- Spectrum



## Architectural Products

### Standard Appliqué Colors

British White (00)	Off-White (01)	Light Gray (02)	Medium Gray (03)	Light Beige (04)
--------------------	----------------	-----------------	------------------	------------------



Medium Beige (05)	Blue Gray (06)	Olive (07)	Rust (08)
-------------------	----------------	------------	-----------



# FlowBar

## FLOWBAR

---

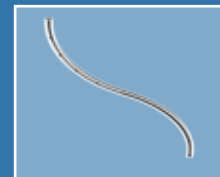
Titus FlowBar architectural linear diffuser system maximizes engineering performance without sacrificing aesthetic considerations for the designer. FlowBar's outstanding performance allows higher airflows than conventional linear diffusers. The wide array of slot widths allow for more CFM per linear foot while minimizing noise and pressure drop. The Flowbar system is available in continuous linear, incremental linear and square configurations.

## FEATURES

---

- The Titus FlowBar linear system is a continuous slot system which allows the air distribution to become inconspicuous, while fully integrating and complementing the ceiling system and other ceiling components.
- Numerous frame styles are available to complement various ceiling types. The FlowBar system supports and is directly connected to the ceiling support components, ensuring straight and true installations.
- Custom curving is available to meet almost any design requirement.

## TYPICAL CURVING OPTIONS





## Architectural Products



### Available Models:

- FL-10
- FL-15
- FL-20
- FL-25
- FL-30



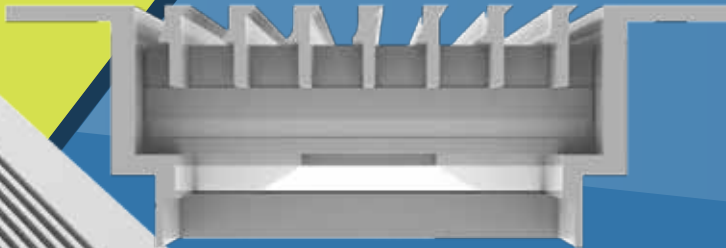
# CT

## CT

Titus CT linear bar diffusers are designed for both heating and cooling applications, supply as well as return. Available in eight different core styles plus a wide selection of frames and borders. These diffusers can be used for ceiling, side wall, or sill installations.

## FEATURES

- Ideal for continuous length applications. Multiple sections are shipped with required alignment strips or pins for field installation.
- Maximum one piece section is 6 feet. Lengths greater than 6 feet are furnished in multiple sections.
- Custom curving is available to meet almost any design requirement within a 2' feet (24" minimum radius) on most models.



## TYPICAL CURVING OPTIONS



## Architectural Products



### Available Models:

- CT-480
- CT-481
- CT-540
- CT-541
- CT-580
- CT-581
- CT-PP-0
- CT-PP-3



# ML

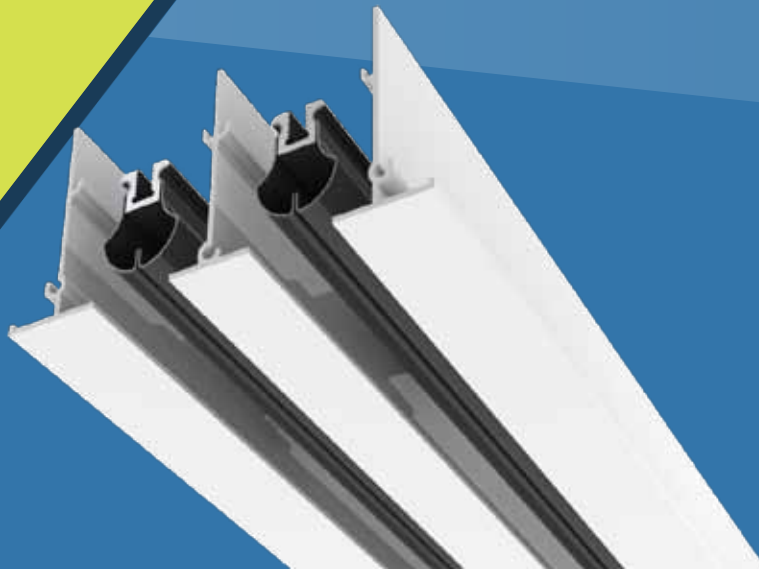
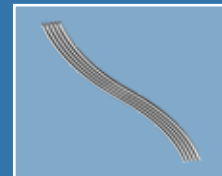
## ML

The Titus ML Modulinear diffuser is a high performance, high quality linear slot diffuser. The unique “ice tong” deflector blades allow both changes in air volume and direction from the face of the diffuser. This diffuser is also available in 1 through 8 slot configurations with the exception of ML-40, which is available in 1 through 4 slot configurations.

## FEATURES

- Choice of 1 through 8 slot configurations with the exception of ML-40, which is available in 1 through 4 slot configurations.
- Projects uniform blanket of air that adheres to the ceiling even at low flow rates.
- Both direction and volume of the discharge air can be adjusted gradually by moving the pattern controllers.
- Custom curving is available to meet almost any design requirement within a 6-foot minimum radius (fixed blades only).

## TYPICAL CURVING OPTIONS



## Architectural Products



### Available Models:

- ML-37
- ML-38
- ML-39
- ML-40





# woodgrain finishes

Walnut Finish



Douglas Textured Finish



Woodgrain finishes may vary slightly from the samples shown and are available in smooth or textured finishes. For more accurate finishes, ask your Titus representative for a woodgrain chip sample.



Mahogany #2401



Maple Textured



Mediterranean



Walnut Textured



Revere Nevada



American Oak



Cherry



Mahogany #2507 Textured



Austalian Cypress



Knotty Pine



Burlwood



Amber Bamboo



Revere



American Nut



Mahogany #1802



English Walnut/DNL Tones



Dark Nut



Douglas



Wide Grain



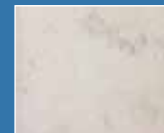
Straight Cherry



Oak Textured



Light Oak



White Marble



Light Travertine

## Architectural Products

### ENVIRO-THERM®

ENVIRO-THERM® is a durable, alkyd enamel which is spray-applied and baked on, much like the finish on a household appliance. This glossy, mar-resistant finish has good surface durability and can be matched to a paint sample.



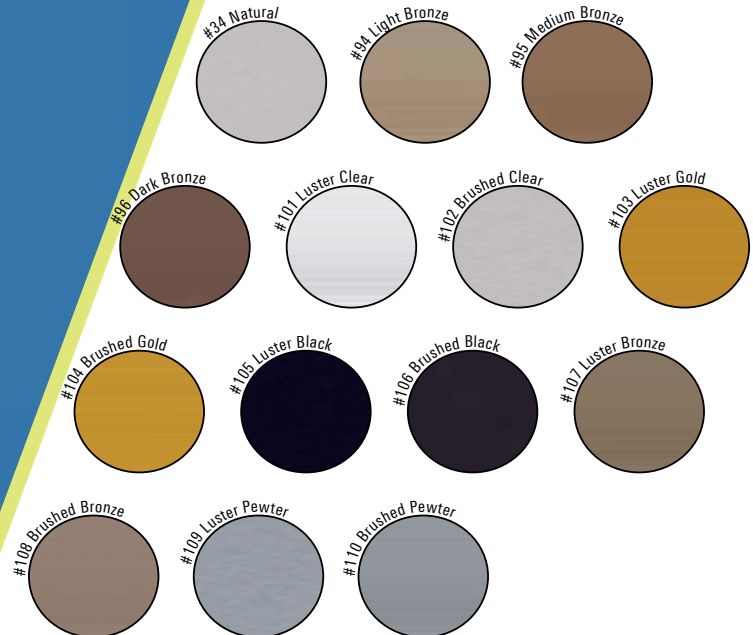
### ENVIRO-THANE®

The Titus Enviro-Thane® finish is a tough, baked-on urethane coating that provides superior surface durability in rough-handling environments. This hard coating resists scratching, chipping and abrasion. Color matching to a paint sample is available.



### ANODIZED FINISHES

Anodizing is an electrolytic treatment which converts the outer layer of aluminum material to a ceramic shell of aluminum oxide. This coating increases the corrosion and weather resistance and resists soiling. Suitable for interior applications. Available for many aluminum products, the anodizing color may vary slightly from part to part or from product to product because of variables inherent in the anodizing process.



finishes

# FRAMELESS BORDER OPTIONS

## FRAMELESS BORDER OPTIONS

For complete ceiling or sidewall integration, all Titus linear diffusers are offered with border style 22 (tape and spackle flanges) making them compatible with any ceiling application without taking away from the intended design.



FL Border 22



FL Border 22

ML-Border 22

CT-Border 22

FL-Border 22



# ML-TZ/FL-TZ

## ARMSTRONG TECHZONE CEILING GRID SOLUTIONS

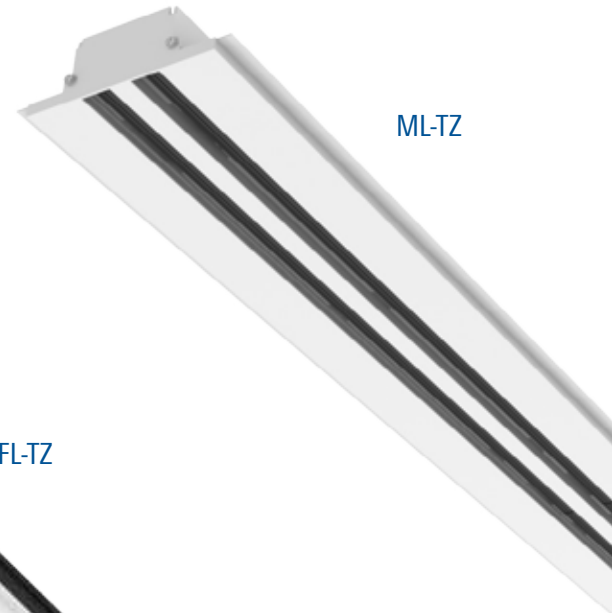
The TZ series is designed to easily integrate into the Armstrong's® TechZone Ceiling Grid System providing a customized and aesthetically pleasing look with standard components.

### FEATURES

- ML-TZ and FL-TZ diffusers are designed to fit in a six-inch wide technical "zone" organizes services, including lighting, diffusers and sprinklers in a system that's pre-qualified for fit and finish.
- Projects uniform blanket of air that adheres to the ceiling even at low flow rates.
- Border styles available for standard and narrow tee TechZone ceiling grids.
- Available for 4-inch and 6-inch wide grids or zones.

### Available Models:

- ML-TZ
- MLR-TZ
- FL-TZ



ML-TZ

FL-TZ

# DISPLACEMENT VENTILATION

## DISPLACEMENT VENTILATION

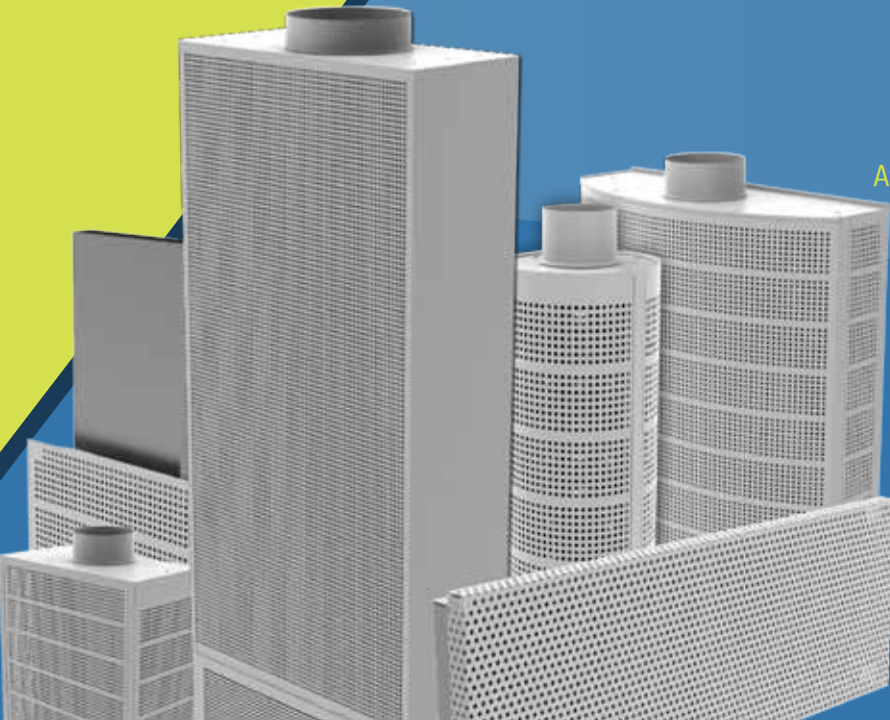
Displacement ventilation provides design flexibility, energy savings, and the highest level of indoor air quality (IAQ). Titus has a full line of displacement ventilation diffusers to accommodate any application, including several options that seamlessly integrate into the building design.

### FEATURES

- Adjustable pattern controllers offer flexibility without the need to move or change the location of the diffusers.
- Customizable airflow pattern and adjacent zone ensures the highest level of thermal comfort for building occupants.

### Available Models:

- DVBC
- DVIR
- DVRI
- DVR1
- DVR3
- DVVC
- DV180
- DVCP
- DVHC
- DVC1



# PLEXICON

## HEATING & COOLING DISPLACEMENT VENTILATION

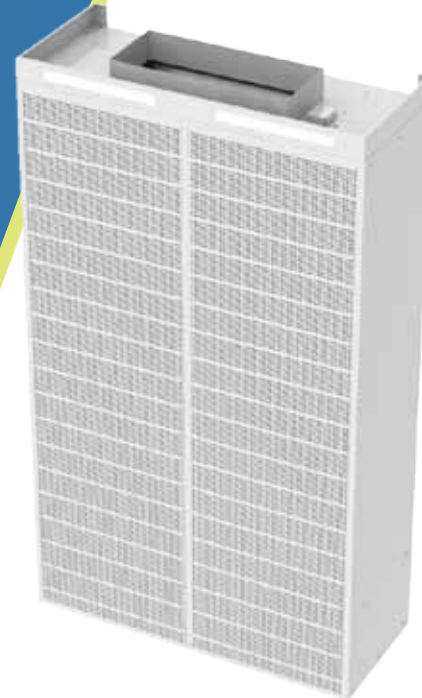
The DVRI-HCS “Plexicon” is a dual function diffuser that combines displacement ventilation and mixed air from one unit. It provides displacement cooling from the top section and traditional heating from the bottom section. The unique dual plenum design utilizes a single supply duct connection for ease of design and installation.

### FEATURES

- Can be positioned against a wall in flush or surface mount applications.
- Utilizes smart logic to instruct the diffuser to automatically change to cooling or heating mode according to supply air temperature.
- Narrow and adjustable temperature band allows operation with all types of HVAC systems.
- Solar-powered, requires no external power for operation.

### Available Models:

- DVRI-HCS 14
- DVRI-HCS 32



SOLAR PLEXICON

# Chilled Beam

## CHILLED BEAM

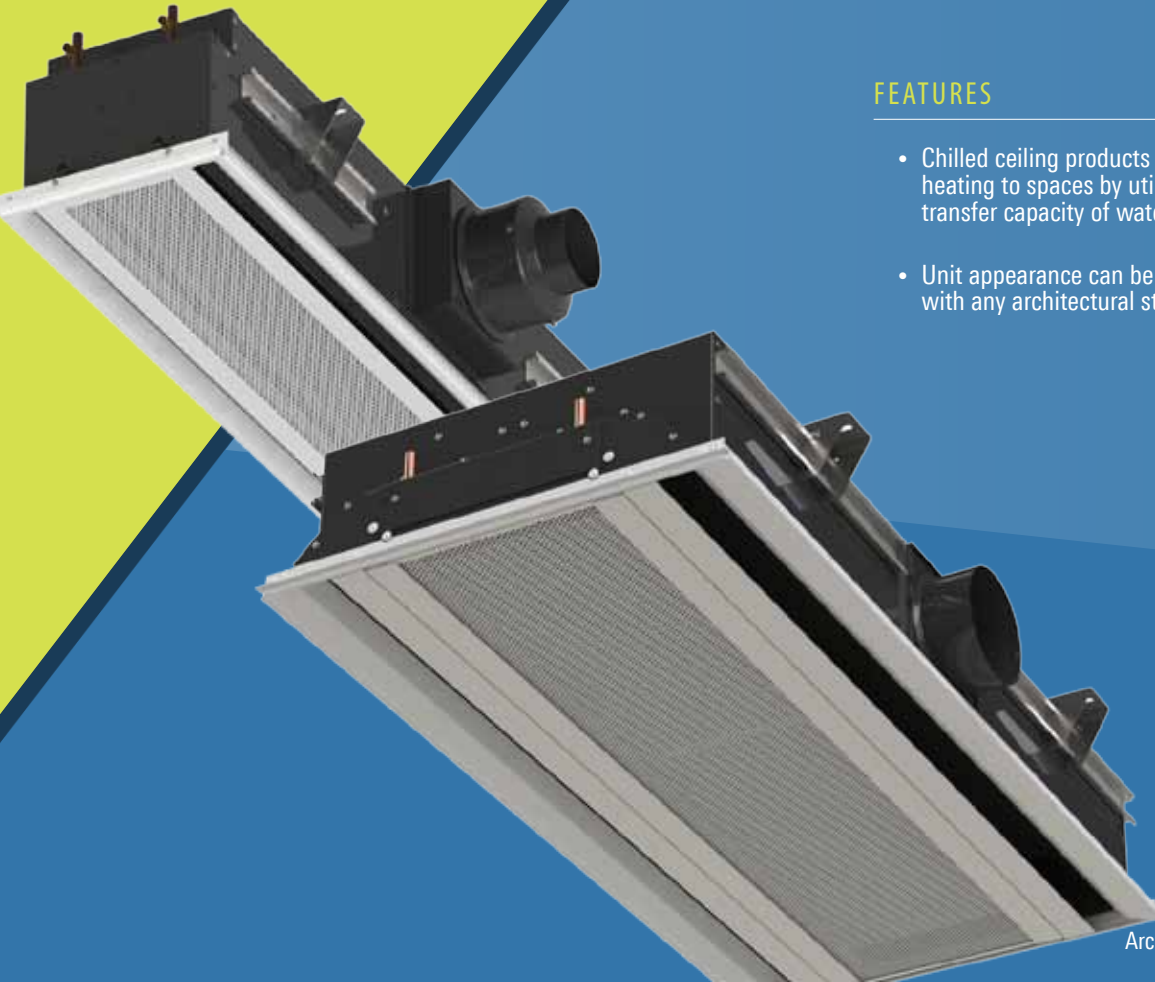
---

Chilled Beams are designed to provide energy savings, excellent comfort and operate with minimal noise.

## FEATURES

---

- Chilled ceiling products provide sensible cooling and heating to spaces by utilizing the more efficient heat transfer capacity of water, as opposed to air.
- Unit appearance can be customized to integrate seamlessly with any architectural style, traditional or contemporary.



## Architectural Products



### Available Models:

- CBAL-24
- CBAL-12
- DISA-V
- SPB
- ALPETY FKL
- ALPETY HKL
- ALPETY SKS



# TSW

## TSW

---

The stamped louvers in the face provide an aesthetically pleasing swirl pattern, as well as a tight 360 degree circular air pattern assuring optimum performance.

## FEATURES

---

- The TSW provides excellent performance in variable air volume systems.
- Well suited for areas that require frequent air changes.

## Available Model:

- TSW



# OMNI-RS

## OMNI-RS

The OMNI-RS diffuser is designed for an architectural look and engineered performance. The unique round plaque face/square panel combination delivers a 360° tight horizontal air pattern without excessive noise or pressure drop. It provides excellent performance in variable air volume systems.

## FEATURES

- The unique round plaque face/square panel combination delivers a 360° tight horizontal air pattern without excessive noise or pressure drop.
- The OMNI-RS provides excellent performance in variable air volume systems.

Available Model:

- OMNI-RS



# R-OMNI

## R-OMNI

---

The appearance of the R-OMNI diffuser is designed for architectural ceilings and facilities with exposed ductwork. The smooth, flat face is free of weld marks ensuring a clean, finished look.

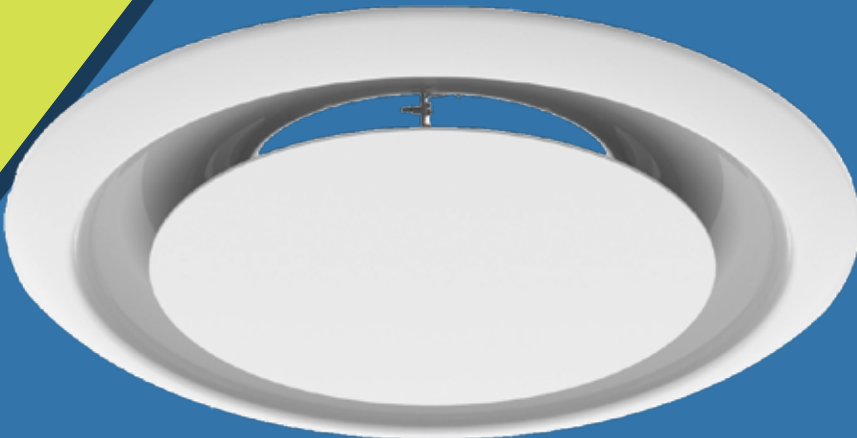
## FEATURES

---

- R-OMNI'S are adjustable in three positions for horizontal or vertical flow. Can be used effectively in heating or cooling applications.
- Excellent performance in variable air volume systems.

### Available Model:

- R-OMNI





# DAT

## DAT

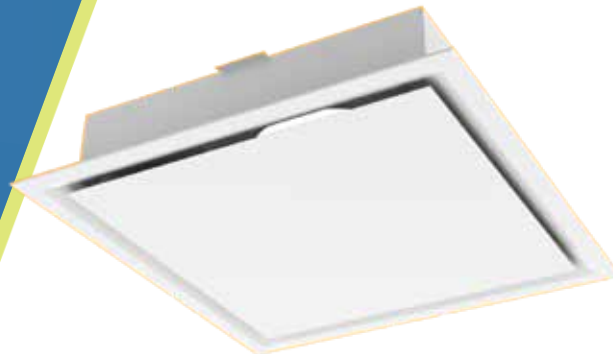
The DAT ceiling diffuser satisfies architectural as well as engineering criteria. Its smooth plaque face allows the diffuser to harmonize with the ceiling system, without sacrificing performance.

## FEATURES

- The deep backpan is designed for optimum performance without excessive noise or pressure drop, and is great for variable air volume applications. The air pattern remains tight and horizontal for effective room air distribution, even when the volume varies over a wide range.

### Available Models:

- DAT
- DAT-NT



# MB/MF

## MODUBLOC / MODUFLOW

Diffusers are designed to be visually pleasing while providing superior performance. They are designed to complement our popular linear diffusers for interior applications.

### FEATURES

- ModuBloc and ModuFlow diffusers are designed so that a ceiling tile (by others) can be field cut and inserted in the face of the diffuser resulting in a smooth, clean appearance that blends with the ceiling.
- Discharge patterns are individually adjustable for each slot, resulting in combinations that fit the distribution requirements of the room.

### Available Models:

- MB-30
- MB-30-NT
- MBR-30
- MBR-30-NT
- MF-10
- MFB-10
- MFBI-10
- MFI-10
- MFR-10
- MFRB-10

MB-30

MF-10

## Architectural Products

As the world leader in advancing the science of air distribution, Titus HVAC works to make life easier by improving the health, efficiency, sustainability, comfort and aesthetics in commercial building environments. Founded in 1946, Titus provides a breadth and depth of innovative air management design solutions that integrate seamlessly into architectural designs without sacrificing comfort.

Please feel free to contact our local representatives for an in-house visit to discuss your project needs.



