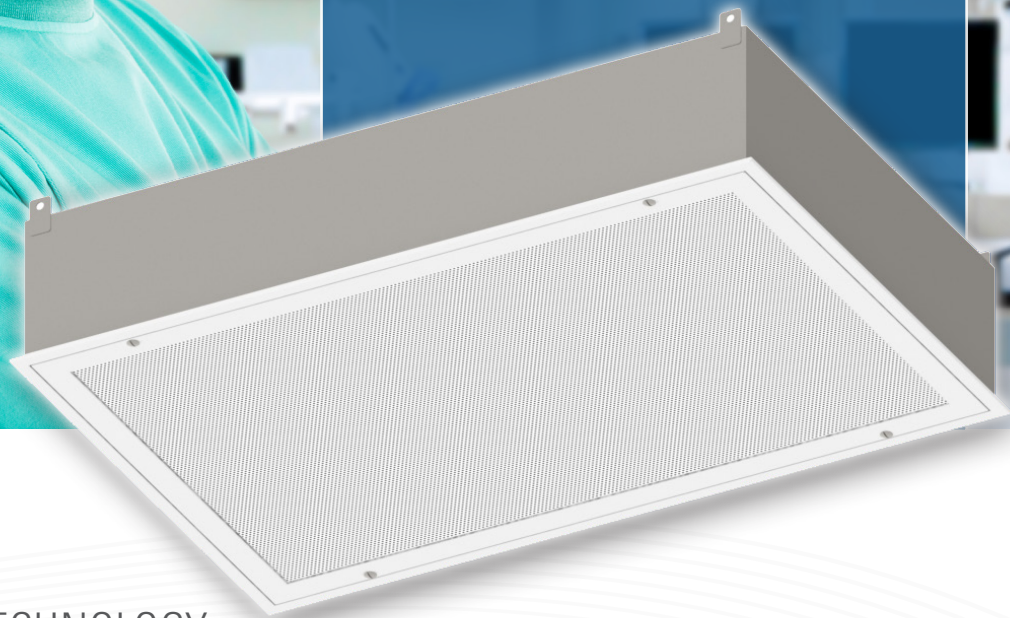




- » Ideal for installation in surgical areas, labs and cleanrooms
- » Three face free area options
- » Room side accessible pressure port option
- » Room side cable operated remote inlet damper
- » Snap-in, equalization baffle for easy removal and cleaning
- » HEPA models accommodate 2" to 4" filters
- » Snap-in, tool-less HEPA filter installation and removal
- » Factory pressure tested fully welded construction option



# TLFR

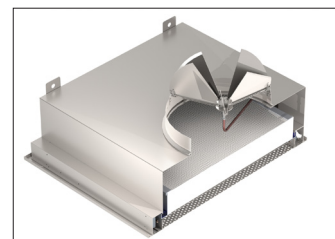
## VERTICAL LAMINAR FLOW TECHNOLOGY

The next generation Titus unidirectional flow diffuser for critical environments has been designed to comply with industry standard, ASHRAE 170, offering important safeguards for surgical patients. Used in operating rooms as the primary diffusers, the vertical piston of air created by the TLFR is used to discharge clean air over the patient during operations. Including snap-in, auto-centering filter retainers, the new TLFR reduces the amount of time and effort during installation and removal of filters. This decreases the time a lab or operating suite is out of commission, allowing facilities to maximize profitability and patient care.

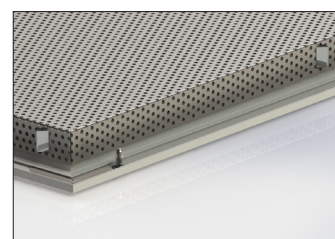
The Titus TLFR diffusers are available in aluminum and stainless steel construction with patent pending filter retainers that require no tools for installation or removal and automatically align the filter gel seal on the diffuser knife edge, as opposed to filter retainers that need to be loosened then removed. In addition to its high quality construction and ease of use, the low pressure design of the TLFR assists in delivering lower energy consumption and aids in reducing first costs.



Knife Edge Profile



Cross section view



Snap-in equalization baffle