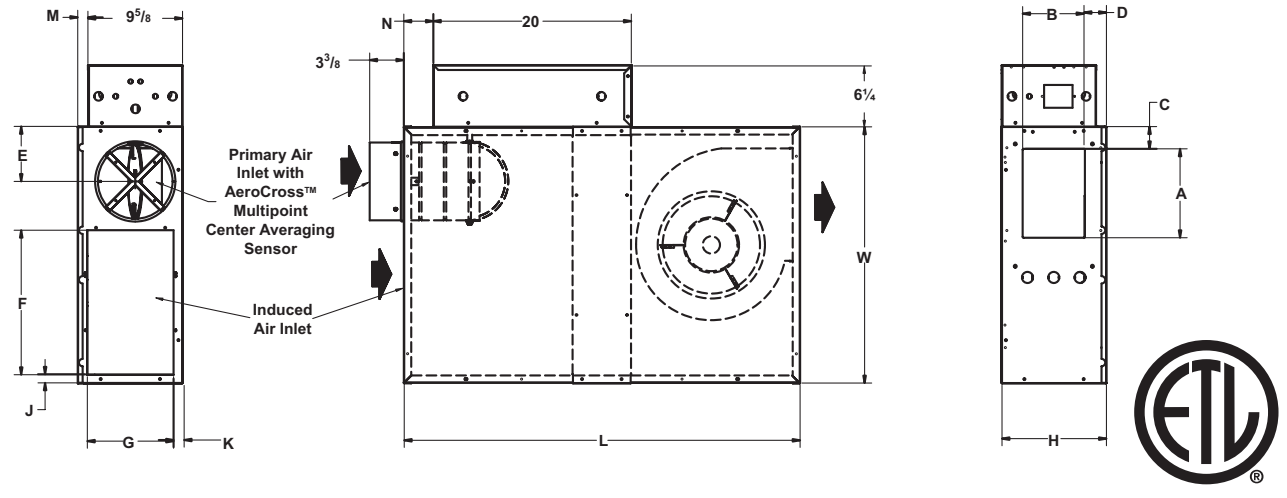


DIMENSIONS

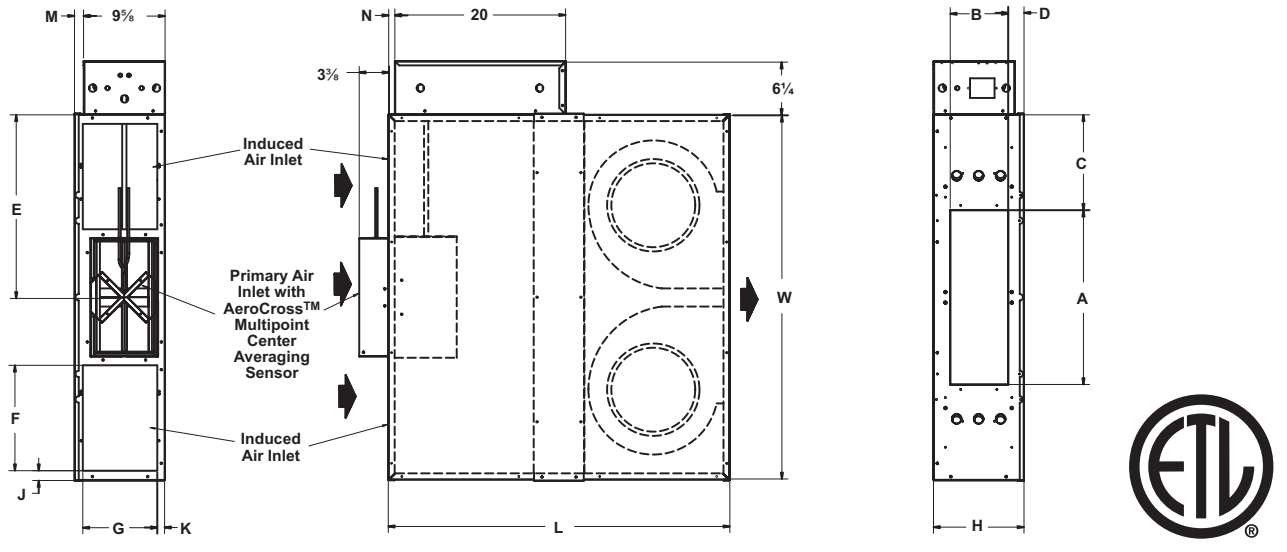
Redefine your comfort zone.™ | www.titus-hvac.com

FLS UNIT DIMENSIONS

DFLS: Sizes 2-3



DFLS: Sizes 4



Size	Inlet Size	A	B	C	D	E	F	G	H	J	K	L	M	N	W	Filter Size
2, 3	8 Dia.	9	6 1/4	2 1/2	2 1/4	5 5/8	14 5/8	8 3/4	10 1/2	7/8	1 1/8	40 1/4	1	3	26	10 x 15
4	8 x 16	20 1/2	6 3/4	11 1/4	1 7/8	21 1/2	12 3/8	8 3/4	10 1/2	1 1/8	7/8	40 1/4	1 1/8	3/4	43	10 x 15

DIMENSIONS

## DIMENSIONS

## fan powered terminals

### HOT WATER COIL SECTION

#### STANDARD FEATURES

- ½" copper tubes
- Aluminum ripple fins
- Connections: Male solder 5/8" for both 1- and 2-row. Left or right hand connections.
- Galvanized steel casing
- Flanged duct connection
- Coil is installed at discharge of unit

#### COIL ROWS

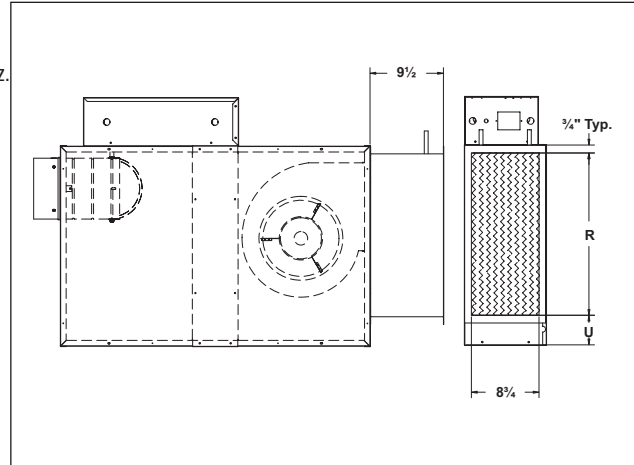
- 1-Row
- 2-Row

#### SUPPLY VOLTAGE

- 120V, 1 ph, 60 Hz.
- 208/240V, 1 ph, 60 Hz.
- 277V, 1 ph, 60 Hz..

Unit Size	R	S
2, 3	21	37/8
4	28	7½

Note: R is an inside dimension



### ELECTRIC COIL SECTION

#### STANDARD FEATURES

- Auto reset thermal cutouts (one per element)
- 80/20 Nickel chrome heating elements
- Magnetic contactors, where required, on pneumatic units
- Airflow safety switch
- Line terminal block (277/1Ø, 208/240/3Ø, or 480/3Ø 4 wire)
- Flanged connection
- Control transformer for DDC or Analog electronic controls
- Pneumatic electric switch for pneumatic parallel fan terminals only
- Fan relay for DDC fan terminals
- Magnetic contactor per step on terminals with DDC or analog electronic controls

Unit Size	R	U
2, 3	10½	10½
4	20¾	20¾

Note: R is an inside dimension

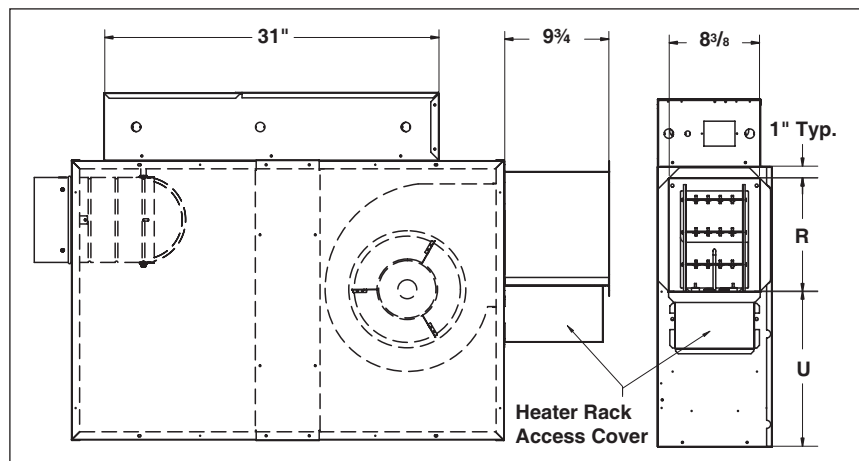
See Electric Heat Coils in Section O for more information

#### OPTIONS

- Interlocking disconnect
- Main power supply fuses
- Mercury contactors
- Manual reset thermal cutout
- Dust-tight construction
- Optional Lynergy Comfort Controlled SSR Electric Heat available

#### SUPPLY VOLTAGE

- 208V, 1 ph, 60 Hz.
- 240V, 1 ph, 60 Hz.
- 277V, 1 ph, 60 Hz.
- 208V, 3 ph, 60 Hz.
- 480V, 3 ph, 60 Hz. (4 wire wye only)



### ADDITIONAL ACCESSORIES (OPTIONAL)

- Induced air filter, 1" thick disposable construction type
- Fan toggle disconnect switch (Not available on units with optional electric coils)
- Fan PE switch for night shutdown (PFLS). See Section O for additional control options.
- Hanger brackets
- Fan motor fusing
- Fibre Free Liner
- Foil Face Liner

- 1- or 2-row hot water coil
- Fan relay/pressure switch for night setback (AFLS)

		Electrical Data		
Unit Size	Motor HP	Motor Full Load Amps		
		120V	208/240V	277V
2	1/6	3.9	1.6	1.2
3	1/4	5.8	2.4	1.8
4	(2) 1/6	8.2	3.4	2.5

#### ECM ELECTRICAL DATA

Unit Size	Motor HP	120V	208V	240V	277V
3	1/3	5.0	3.3	2.8	2.6
4	(2) 1/3	10.0	6.6	5.6	5.2

Note: All motors are single phase, same voltage as electrical coils (when supplied), with exception that 277 volt motors are used with 480 volt, three phase coils (four wire wye)