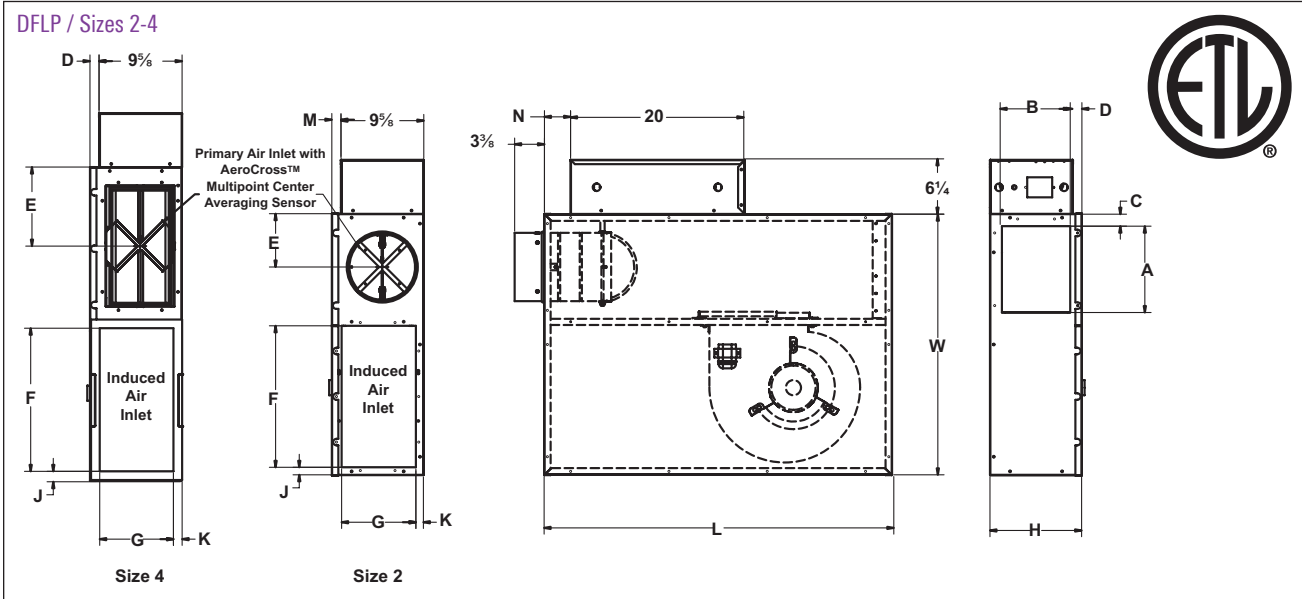


FLP UNIT DIMENSIONS

DFLP / Sizes 2-4



Model FLP Parallel Unit																
Unit Size	Inlet Size	A	B	C	D	E	F	G	H	J	K	L	M	N	W	Filter Size
2	6, 8	10	8 ¹ / ₈	1 ³ / ₈	1 ¹ / ₈	6 ¹ / ₈	16 ¹ / ₄	8 ¹ / ₂	10 ¹ / ₂	⁷ / ₈	⁷ / ₈	40 ¹ / ₄	1	2	30	18 X 10
4	14 x 8	15 ⁷ / ₈	7 ⁷ / ₈	1 ³ / ₈	1	9 ¹ / ₈	16 ¹ / ₂	8 ³ / ₄	10 ¹ / ₂	1 ¹ / ₄	1	40 ¹ / ₄	1	³ / ₄	36 ¹ / ₈	18 X 10

DIMENSIONS

fan powered terminals

HOT WATER COIL SECTION

STANDARD FEATURES

- ½" copper tubes
- Aluminum ripple fins, 10 per inch
- Connections: Male solder, ½"

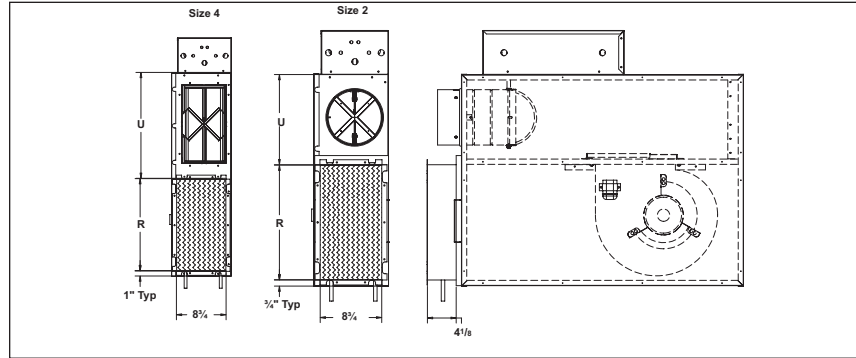
COIL ROWS

- 1-Row
- 2-Row

SUPPLY VOLTAGE

- 120V, 1 ph, 60 Hz.
- 208/240V, 1 ph, 60 Hz.
- 277V, 1 ph, 60 Hz.

Note: R is an inside dimension



Unit Size	R	S
2	16 ³ / ₈	12 ⁷ / ₈
4	16 ⁵ / ₈	18 ⁷ / ₈

ELECTRIC COIL SECTION

STANDARD FEATURES

- Auto reset thermal cutouts (one per element)
- 80/20 Nickel chrome heating elements
- Magnetic contactors, where required, on pneumatic units
- Airflow safety switch
- Line terminal block (277/1Ø, 208/240/3Ø, or 480/3Ø 4 wire)
- Flanged connection

Unit Size	R	U
2	10 ³ / ₈	18 ¹ / ₂
4	16 ⁵ / ₈	18 ⁵ / ₈

Control box cover is as shown when optional door interlock disconnect switch is used.

Standard control box cover (no disconnect switch) is attached with sheet metal screws, not hinged.

See Electric Heat Coils in Section O for more information

Note: R is an inside dimension

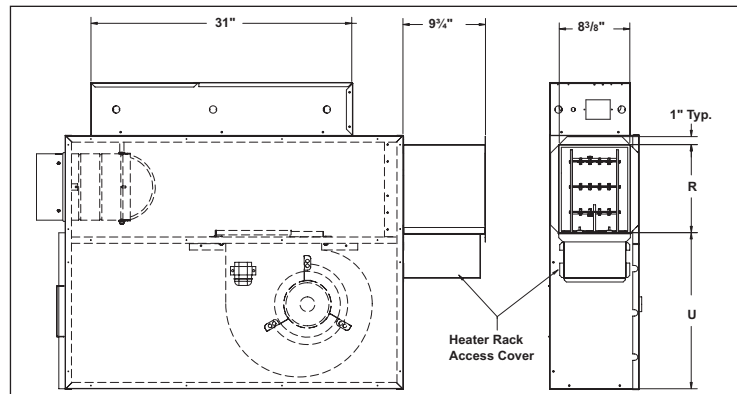
- Control transformer for DDC or Analog electronic controls
- Pneumatic electric switch for pneumatic parallel fan terminals only
- Fan relay for DDC fan terminals
- Magnetic contactor per step on terminals with DDC or analog electronic controls
- Manual reset thermal cutout
- Dust-tight construction
- Optional Lynergy Comfort Controlled SSR Electric Heat available

OPTIONS

- Interlocking disconnect
- Main power supply fuses
- Mercury contactors

SUPPLY VOLTAGE

- 208V, 1 ph, 60 Hz.
- 240V, 1 ph, 60 Hz.
- 277V, 1 ph, 60 Hz.
- 208V, 3 ph, 60 Hz.
- 480V, 3 ph, 60 Hz. (4 wire wye only)



ADDITIONAL ACCESSORIES (OPTIONAL)

- Induced air filter, 1" thick, disposable construction type
- Toggle disconnect switch (not available on units with optional electric coils)
- Fibre-Free Liner
- Foil Face Liner
- EcoShield Liner
- Hanger brackets
- Fan unit fusing

		Electrical Data		
Unit Size	Motor HP	Motor Full Load Amps		
		120V	208/240V	277V
2	1/6	4.3	1.8	1.3
4	1/4	5.4	2.3	1.7

Note: All motors are single phase 60Hz, same voltage as electric coils (when supplied), with exception that 277 volt motors are used with 480 volt, 3 phase coils (four wire wye)

ECM ELECTRICAL DATA

Unit Size	Motor HP	120V	208V	240V	277V
2	1/3	5.0	3.3	2.8	2.6
4	1/3	5.0	3.3	2.8	2.6

FLA = Full Load Amperage, as tested in accordance with UL 1995
All fan motors are single phase, same voltage as electric coil (when supplied), with exception that 277 voltage motors are used with 480 volt / 3 phase coils (4 wire wye)