

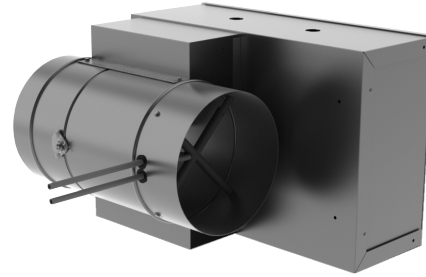
**EXTERNAL ROUND DUCT
RETROFIT TERMINAL UNITS**

RECOMMENDED CFM RANGES

Available Models:

- PECV / Pneumatic
- EECV / Electric
- AECV / Analog Electronic
- DECV / Digital Electronic

Available in stainless steel for exhaust applications. Straight tube design.



Inlet Size	Total cfm Range	cfm Ranges of Minimum and Maximum Settings							
		PECV Pneumatic Titus II Controller		PECV Pneumatic Titus I Controller		AECV Analog Electronic TA1 Controller		DECV Typical Digital Controller	
		Minimum	Maximum	Minimum	Maximum	Minimum	Maximum	Minimum	Maximum
4	0-225	50-210	90-225	65-210	90-225	50-225	50-225	30-225	30-225
5	0-350	70-300	125-350	90-300	125-350	70-350	70-350	40-350	40-350
6	0-500	80-345	145-500	100-345	145-500	80-500	80-500	45-500	45-500
7	0-650	120-515	210-650	150-515	210-650	120-650	120-650	70-650	70-650
8	0-900	160-700	285-900	205-700	285-900	160-900	160-900	90-900	90-900
9	0-1050	205-900	370-1050	260-900	370-1050	205-1050	205-1050	120-1050	120-1050
10	0-1400	250-1110	455-1400	325-1110	455-1400	250-1400	250-1400	145-1400	145-1400
12	0-2000	330-1460	600-2000	425-1460	600-2000	330-2000	330-2000	190-2000	190-2000
14	0-3000	525-2335	955-3000	675-2335	955-3000	525-3000	525-3000	300-3000	300-3000
16	0-4000	665-2970	1215-4000	860-2970	1215-4000	665-4000	665-4000	385-4000	385-4000

Note: On pressure dependent units, minimum cfm is always zero, and there is no maximum. On controls mounted by Titus but supplied by others, Factory Mounting Authorization (FMA) these values are guidelines only. Controls mounted on an FMA basis are calibrated in the field.

PECV, AECV, DECV, EECV / RADIATED SOUND POWER LEVELS

Redefine your comfort zone.™ | www.titus-hvac.com

Inlet Size	cfm	Min. ΔPs	Sound Power Octave Bands																											
			0.5" ΔPs							1.0" ΔPs							1.5" ΔPs							2.0" ΔPs						
			2	3	4	5	6	7	NC	2	3	4	5	6	7	NC	2	3	4	5	6	7	NC	2	3	4	5	6	7	NC
04	100	0.07	29	20	21	24	28	20	-	34	26	27	30	33	26	-	37	30	31	33	36	29	-	40	33	34	36	39	32	-
	125	0.12	34	26	27	30	33	26	-	40	33	33	35	39	31	-	43	36	37	39	42	35	12	45	39	40	41	44	37	14
	150	0.17	39	31	32	34	38	30	-	44	38	38	40	43	36	13	47	41	42	44	46	39	16	49	44	44	46	48	42	18
	175	0.23	42	36	36	38	41	34	11	48	42	42	44	47	40	17	51	46	46	48	50	43	20	53	48	49	50	52	45	23
	200	0.30	46	39	39	42	44	37	14	51	46	46	48	50	43	20	54	49	49	51	53	46	24	56	52	52	53	55	49	26
05	150	0.07	30	21	22	25	29	22	-	36	28	29	30	35	28	-	39	31	32	34	38	31	-	41	34	35	36	40	33	10
	200	0.12	37	29	30	32	36	29	-	43	35	36	38	41	35	11	46	39	40	41	45	38	15	48	42	43	44	47	40	17
	250	0.19	43	35	36	38	41	35	11	48	42	42	44	47	40	17	51	45	46	47	50	43	20	53	48	49	50	52	45	23
	300	0.27	47	40	41	43	46	39	16	52	47	47	49	51	45	21	56	50	51	52	54	48	25	58	53	54	54	56	50	28
	350	0.37	51	44	45	47	49	43	19	56	51	51	53	55	48	26	59	55	55	56	58	51	30	61	57	58	58	60	54	33
06	300	0.09	41	33	33	34	38	32	-	46	39	39	40	44	37	14	49	42	43	43	47	41	17	51	45	46	46	49	43	20
	350	0.12	44	37	37	38	42	36	12	49	43	44	44	47	41	17	52	46	47	47	50	44	21	54	49	50	50	52	47	24
	400	0.16	47	40	41	42	45	39	15	52	46	47	48	50	45	21	55	50	51	51	53	48	25	57	52	53	53	55	50	28
	450	0.20	50	44	44	45	48	42	18	55	50	50	51	53	48	24	58	53	54	54	56	51	28	60	56	56	57	58	53	31
	500	0.25	52	47	47	48	50	45	20	58	53	53	54	56	50	27	60	56	57	57	59	53	31	63	59	59	59	61	56	34
07	450	0.11	44	36	37	38	41	36	11	49	42	43	44	47	42	17	52	46	47	47	50	45	21	54	48	50	49	52	47	24
	500	0.13	47	39	40	40	44	39	14	52	45	46	46	49	44	20	55	49	50	50	52	47	24	57	51	52	52	55	50	27
	550	0.16	49	42	42	43	46	41	16	54	48	49	49	51	47	23	57	51	52	52	55	50	27	59	54	55	55	57	52	30
	600	0.19	51	44	45	45	48	43	18	56	50	51	51	53	49	25	59	54	55	54	57	52	29	61	56	57	57	59	54	32
	650	0.22	53	46	47	47	50	45	21	58	52	53	53	55	51	28	61	56	57	56	58	54	32	63	58	59	59	61	56	34
08	600	0.11	46	38	39	39	43	38	13	51	44	45	45	48	44	19	54	48	49	48	51	47	23	56	50	51	51	53	49	26
	650	0.13	48	40	41	41	45	40	15	53	46	47	47	50	46	21	56	50	51	50	53	49	25	58	53	53	53	55	51	28
	700	0.15	50	42	43	43	47	42	17	55	49	49	49	52	47	23	58	52	53	52	55	51	27	60	55	55	55	57	53	30
	750	0.17	51	44	45	45	48	44	18	56	50	51	51	53	49	25	59	54	54	54	56	52	29	61	57	57	56	59	55	32
	800	0.20	53	46	46	47	50	45	20	58	52	52	52	55	51	27	61	56	56	56	58	54	31	63	58	59	58	60	56	34
09	800	0.12	49	40	42	41	45	40	15	54	47	48	47	51	46	22	57	50	51	50	54	49	26	59	53	54	53	56	52	28
	850	0.14	50	42	43	42	47	42	17	55	48	49	48	52	48	24	58	52	53	52	55	51	27	60	55	55	54	57	53	30
	900	0.16	51	44	45	44	48	43	19	56	50	51	50	53	49	25	59	54	54	53	56	52	29	61	56	57	56	59	55	32
	950	0.17	53	45	46	45	49	45	20	58	51	52	51	55	50	27	61	55	56	55	58	54	31	63	58	58	57	60	56	33
	1000	0.19	54	47	48	46	51	46	22	59	53	54	52	56	52	28	62	56	57	56	59	55	32	64	59	60	59	61	57	35
10	900	0.10	47	39	40	39	44	39	14	52	45	46	45	49	45	20	55	49	49	48	52	48	24	58	51	52	50	54	51	26
	1000	0.13	50	42	42	41	46	42	16	55	48	48	47	51	47	23	58	52	52	51	54	51	27	60	54	55	53	57	53	29
	1100	0.16	52	45	45	44	48	44	18	57	51	51	50	54	50	25	60	54	55	53	57	53	29	62	57	57	56	59	55	32
	1200	0.18	54	47	47	46	50	46	21	59	53	53	52	55	52	28	62	57	57	55	59	55	32	64	59	59	58	61	58	34
	1300	0.22	56	49	49	48	52	48	23	61	55	55	54	57	54	30	64	59	59	58	60	57	34	66	61	61	60	63	60	37
12	1200	0.09	47	38	39	38	42	39	12	52	44	45	44	47	44	19	55	48	49	47	50	48	23	57	50	51	50	53	50	26
	1400	0.12	51	43	43	42	46	43	17	56	49	49	48	51	48	23	59	52	53	51	54	51	27	61	54	55	54	56	54	30
	1600	0.16	54	46	47	46	49	46	20	59	52	53	51	54	51	27	62	56	56	55	57	55	31	64	58	59	57	59	57	34
	1800	0.20	57	50	50	49	52	49	24	62	55	56	55	57	54	31	65	59	59	58	60	58	34	67	61	62	60	62	60	37
	2000	0.25	60	52	52	51	55	51	27	65	58	59	57	60	57	34	68	62	62	61	63	60	38	70	64	65	63	65	63	40
14	1500	0.07	47	37	38	37	42	39	12	52	44	44	43	47	44	18	55	47	48	46	50	48	22	57	50	50	48	52	50	25
	1800	0.11	51	42	43	42	46	43	16	56	49	49	47	52	49	23	59	52	53	51	54	52	27	61	55	55	53	57	54	30
	2100	0.15	55	47	47	46	50	47	21	60	53	53	52	55	53	27	63	56	57	55	58	56	31	65	59	59	57	60	58	34
	2400	0.19	58	50	50	49	53	50	25	63	56	57	55	58	56	31	66	60	60	58	61	59	35	68	62	63	61	63	61	38
	2700	0.24	61	53	53	52	56	53	28	66	59	60	58	61	59	35	69	63	63	62	64	62	39	71	66	66	64	66	64	42
16	2000	0.08	49	39	39	38	44	41	14	54	45	46	44	49	46	19	56	49	49	47	52	49	23	58	51	52	50	54	52	26
	2400	0.11	53	44	44	43	48	45	18	58	50	50	49	53	51	25	61	54	54	52	56	54	29	63	56	56	55	58	56	31
	2800	0.15	57	48	48	47	52	49	22	62	54	54	53	57	55	29	64	58	58	56	59	58	33	66	60	61	59	62	60	36
	3200	0.19	60	52	52	50	55	52	26	65	58	58	56	60	58	33	68	62	62	60	63	61	37	70	64	64	62	65	63	40
	3600	0.24	63	55	55	54	57	55	30	67	61	61	59	62	61	36	70	65	65	63	65	64	40	72	67	67	65	67	66	43

- Radiated sound is the noise transmitted through the unit casing
- Min ΔPs is the static pressure drop from the unit inlet to the unit outlet with primary damper full open
- Sound power levels are in dB, ref 10⁻¹² watts
- All performance based on tests conducted in accordance with ASHRAE 130-2008 and AHRI 880-2011
- All NC levels determined using AHRI 885-2008 Appendix E. See Terminal Unit Engineering Guidelines.
- Dash (-) in space denotes NC value less than NC10

PECV, AECV, DECV, EECV / DISCHARGE SOUND POWER LEVELS

Inlet Size	cfm	Min. ΔPs	Sound Power Octave Bands																											
			0.5" ΔPs							1.0" ΔPs							1.5" ΔPs							2.0" ΔPs						
			2	3	4	5	6	7	NC	2	3	4	5	6	7	NC	2	3	4	5	6	7	NC	2	3	4	5	6	7	NC
04	100	0.07	65	51	46	45	35	35	21	75	60	53	51	38	40	34	82	66	57	54	40	42	42	86	70	60	57	41	44	48
	125	0.11	64	52	48	46	38	38	20	75	61	55	52	41	43	34	81	67	59	56	43	45	42	85	71	62	58	44	47	47
	150	0.17	64	53	49	47	41	41	20	74	62	56	53	44	45	33	81	68	60	57	46	48	41	85	71	63	60	47	50	47
	175	0.22	64	53	50	48	44	43	19	74	63	57	54	47	47	33	80	68	61	58	49	50	40	84	72	64	60	50	52	46
	200	0.29	63	54	51	49	46	44	19	74	63	58	55	49	49	32	80	69	62	59	51	51	40	84	73	65	61	52	53	46
05	150	0.07	71	53	49	46	36	39	28	81	62	56	52	39	43	41	87	67	60	56	41	46	49	91	71	63	58	42	48	54
	200	0.12	70	55	51	48	41	43	27	80	64	58	54	44	47	40	86	69	62	58	46	50	48	90	73	65	60	47	52	54
	250	0.19	69	56	53	50	45	46	27	80	65	59	56	47	50	40	86	70	63	59	49	53	47	90	74	66	62	50	55	53
	300	0.27	69	57	54	52	47	49	22	79	66	61	57	50	53	36	85	71	65	61	52	55	43	89	75	67	63	53	57	43
	350	0.37	69	58	55	53	50	51	22	79	67	62	59	53	55	35	85	72	66	62	55	58	43	89	76	68	64	56	59	43
06	300	0.09	74	59	54	52	43	37	29	80	67	61	56	50	44	37	84	71	65	59	54	47	41	86	74	68	61	56	50	44
	350	0.12	75	60	55	53	44	38	30	81	68	62	58	51	45	38	85	72	66	61	55	49	43	88	75	69	63	58	51	46
	400	0.16	76	61	55	55	46	39	32	83	69	63	60	52	46	40	86	73	67	62	56	50	44	89	76	70	64	59	52	48
	450	0.20	78	62	56	56	47	40	33	84	69	63	61	53	47	41	87	74	68	64	57	50	46	90	77	71	66	60	53	49
	500	0.25	78	63	57	58	47	41	34	85	70	64	62	54	47	42	88	75	68	65	58	51	47	91	78	71	67	61	54	50
07	450	0.11	75	62	57	55	46	41	31	82	69	64	60	53	48	39	85	73	68	63	57	51	43	88	76	71	65	59	54	47
	500	0.13	76	62	57	56	47	42	32	83	70	65	61	54	48	40	86	74	69	64	57	52	45	89	77	72	66	60	55	48
	550	0.16	77	63	58	58	48	43	33	83	71	65	62	54	49	41	87	75	69	65	58	53	46	90	78	72	67	61	56	49
	600	0.19	78	64	58	59	49	43	34	84	71	66	63	55	50	42	88	76	70	66	59	54	46	90	79	73	68	62	56	50
	650	0.22	78	64	59	59	49	44	35	85	72	66	64	56	50	43	88	76	70	67	60	54	47	91	79	73	69	62	57	51
08	600	0.10	76	63	58	57	48	44	32	82	70	65	62	55	50	40	86	75	70	65	59	54	44	88	78	73	67	61	57	47
	650	0.12	77	63	59	58	49	45	33	83	71	66	63	55	51	40	87	75	70	66	59	55	45	89	78	73	68	62	58	48
	700	0.14	78	64	59	59	50	45	33	84	71	66	64	56	52	41	87	76	70	66	60	55	46	90	79	73	68	62	58	49
	750	0.16	78	64	59	60	50	46	31	84	71	67	64	57	52	39	88	76	71	67	60	56	44	90	79	74	69	63	59	47
	800	0.19	79	64	60	60	51	46	32	85	72	67	65	57	53	40	88	76	71	68	61	56	44	91	79	74	70	64	59	48
09	800	0.12	77	64	60	58	51	47	30	83	71	68	63	57	53	38	87	75	72	66	61	57	43	89	78	75	68	64	60	46
	850	0.14	78	64	60	59	51	47	31	84	71	68	64	58	54	39	87	76	72	66	62	58	43	90	79	75	68	64	60	46
	900	0.16	78	64	61	60	52	48	31	84	72	68	64	58	54	39	88	76	73	67	62	58	44	90	79	76	69	65	61	47
	950	0.17	79	65	61	60	52	48	32	85	72	69	65	59	55	40	88	77	73	68	63	59	44	91	80	76	70	65	61	48
	1000	0.19	79	65	61	61	53	49	33	85	73	69	66	59	55	40	89	77	73	68	63	59	45	91	80	76	70	66	62	48
10	900	0.10	76	64	60	59	51	49	29	82	72	67	63	58	55	36	86	76	72	66	61	59	41	88	79	75	68	64	61	44
	1000	0.13	77	65	61	60	52	49	30	83	72	68	65	58	56	38	86	77	72	67	62	59	42	89	80	75	69	65	62	45
	1100	0.16	77	65	61	61	53	50	31	84	73	69	66	59	56	39	87	77	73	69	63	60	43	90	80	76	70	66	63	46
	1200	0.18	78	66	62	62	53	51	32	84	73	69	67	60	57	39	88	78	73	70	64	61	44	90	81	76	71	67	63	47
	1300	0.22	79	66	62	63	54	51	32	85	74	70	68	61	58	40	88	78	74	70	64	61	45	91	81	77	72	67	64	48
12	1200	0.09	68	58	56	55	55	51	18	73	63	60	59	59	56	25	76	66	63	61	61	59	29	78	68	64	62	62	61	31
	1400	0.12	70	60	58	57	57	53	21	75	65	62	61	61	58	28	78	68	65	63	63	61	32	80	70	67	64	64	63	34
	1600	0.16	72	62	60	59	59	54	24	77	67	64	63	63	59	30	80	70	67	65	65	62	34	82	72	69	66	66	64	37
	1800	0.20	74	64	62	61	61	56	26	79	69	66	64	64	60	32	82	72	68	66	66	63	36	84	74	70	68	68	65	39
	2000	0.25	75	66	63	62	63	57	28	80	71	67	66	66	61	34	83	74	70	68	68	64	38	85	76	72	69	69	66	41
14	1500	0.07	67	57	56	56	56	55	18	73	62	60	59	59	59	25	76	65	63	62	62	62	29	78	67	65	63	63	64	31
	1800	0.11	70	60	58	58	58	57	21	75	65	63	62	62	62	28	78	68	65	64	64	64	32	81	70	67	66	66	66	35
	2100	0.15	72	63	60	61	61	59	24	78	68	65	64	64	63	31	81	71	67	66	66	66	35	83	73	69	68	68	68	38
	2400	0.19	74	65	62	62	62	61	26	79	70	66	66	66	65	33	83	73	69	68	68	68	37	85	75	71	70	70	70	40
	2700	0.24	76	67	64	64	64	62	28	81	72	68	68	68	67	35	84	75	71	70	70	69	39	86	77	72	71	72	71	42
16	2000	0.08	63	59	59	58	58	58	22	70	64	63	61	62	62	26	74	67	66	64	64	65	29	77	69	68	65	65	67	30
	2400	0.11	64	62	62	61	61	60	24	71	67	66	64	64	65	28	75	70	68	66	66	67	31	78	72	70	68	68	69	33
	2800	0.15	65	65	64	63	63	62	26	72	70	68	66	67	67	30	76	73	71	68	69	69	33	79	75	72	70	71	71	35
	3200	0.19	65	67	66	65	65	64	27	73	72	70	68	69	68	32	77	75	73	70	71	71	35	80	77	74	72	72	73	37
	3600	0.24	66	69	67	67	67	65	29	73	74	72	70	70	70	33	77	77	74	72	72	72	37	80	79	76	74	74	74	39

- Discharge sound is the noise emitted from the unit discharge into the downstream ductwork
- Min ΔPs is the static pressure drop from the unit inlet to the unit outlet with primary damper full open
- Sound power levels are in dB, ref 10⁻¹² watts
- All performance based on tests conducted in accordance with ASHRAE 130-2008 and AHRI 880-2011
- All NC levels determined using AHRI 885-2008 Appendix E. See Terminal Unit Engineering Guidelines.
- Dash (-) in space denotes NC value less than NC10