

The Shed
New York, NY

CASE STUDY | culture venues

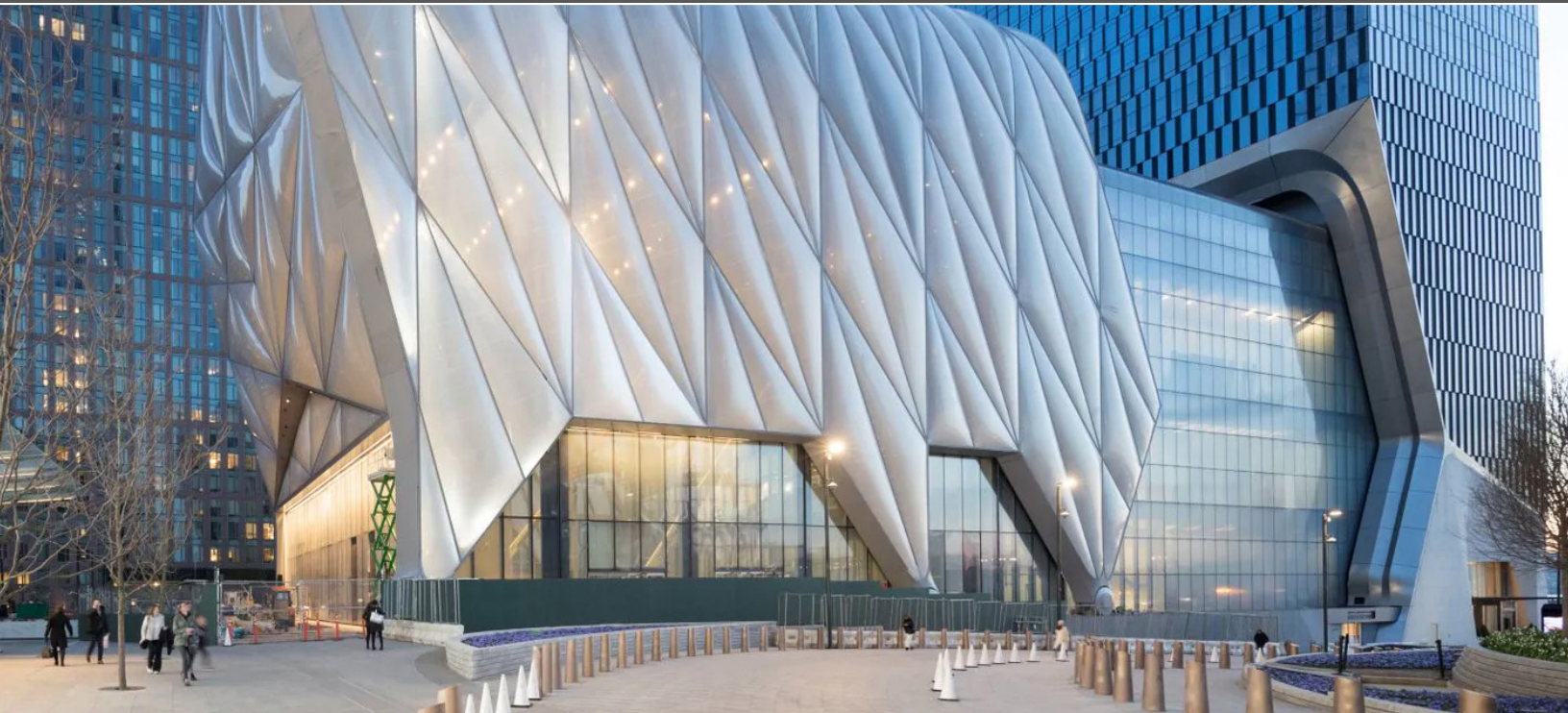


PHOTO BY IWAN BAAN, COURTESY OF THE SHED

Client - The Shed

Rep Office - Air Distribution Enterprises

Lead Architect - Diller Scofidio + Renfro

Collaborating Architect - Rockwell Group

Structural Engineers - Thornton-Tomasetti Engineers

Mechanical Contractor - ASM Mechanical

Kinetic Systems Consultant - Hardesty & Hanover

Construction - Sciam Construction, LLC

Photography - Iwan Baan / DS+R

LEED Certification - None

Project Highlights:

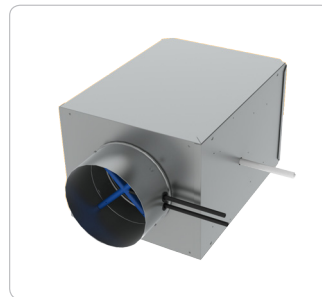
- » 200,000 square feet
- » Additional 17,000 square feet when McCourt expanded
- » 110 foot ceiling high ETFE
- » 475 million dollar project
- » Four-story glass facade (custom designed)
- » Completed in April 2019



ABOUT THE PROJECT

Since its initial conception over ten years ago, The Shed has been amongst the top ten buildings everyone has been eagerly waiting to see realized for several years. The pop culture and futuristic venue opened in April 2019, and it is by far the most impressive building to be included in the Hudson Yards development to date.

The design collaboration of architects Diller Scofidio + Renfro and the Rockwell Group help to create a multi-functional building for the creative, visual and performing artists that has never been seen before. The eight-story base building contains two levels of gallery space, a versatile theater, an event area, rehearsal space, and a creative lab. What separates The Shed from other cultural venues is the flexibility offered by the unique outer shell. It can deploy and extend using its railing system to the adjoining plaza space to create an awe-inspiring footprint that doubles the size of the original plaza area. Known as "The McCourt", it is truly a sight to behold. The plaza area can then be used in a variety of ways to accommodate large-scale performances and events. Multiple events can be ongoing in different areas of the building without impacting one another as well. The perfect "Swiss Army Knife" building that can be pushed to its creative limits is the ideal venue for artists and performers alike to showcase their talents.



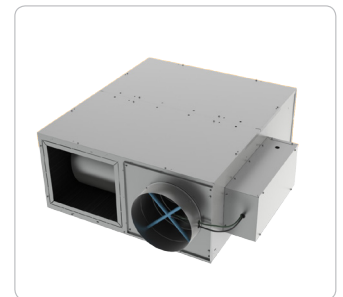
DESV



ML



FLOWBAR



DTQP



THE TITUS SOLUTION

HIGH PROFILE BUILDINGS DESERVE HIGH PERFORMING PRODUCTS

Incorporating the best HVAC system and corresponding products was also an integral part of this process. The products selected were not only selected for their performance, but for their aesthetics and seamless integration features as well. Several Titus products were installed throughout the many floor levels, but the most impactful ones include the FlowBar, DESV, DTQP, and the ML diffuser.

The FlowBar™ architectural linear diffuser system maximizes engineering performance without sacrificing aesthetic considerations for the designer. Its outstanding performance allows higher airflows than conventional linear diffusers, with lower noise levels, making it an ideal choice for high profile designs like The Shed. For even better aesthetics, it can be custom curved to match the curvature of the ceiling making it truly a one-of-a-kind air distribution unit and a perfect fit for this project. Additionally, our ML modular diffuser is a high performing, high quality linear slot diffuser with unique “ice tong” deflector blades that allow both changes in air volume and direction from the face of the air device. This diffuser is also available in 1 through 8-slot configurations. The FlowBar™ and the ML are also available in a wide variety of optional wood grain finishes to blend into any interior design.

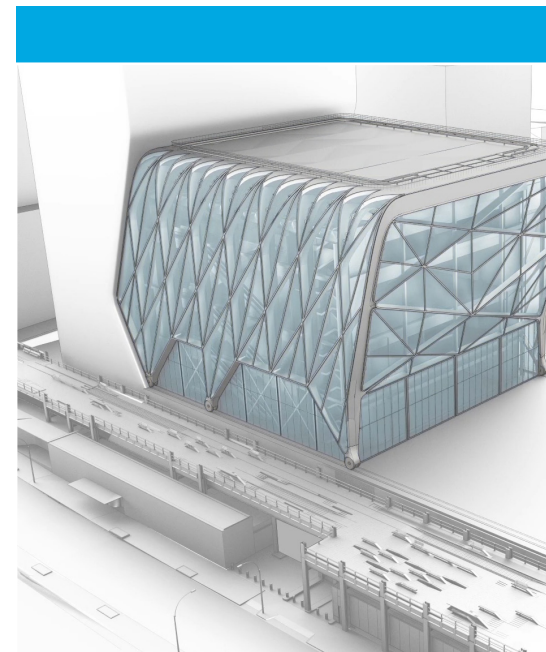
The DESV is a single duct terminal unit that regulates airflow to a zone in response to zone temperature requirements. The Titus ESV is unique as it incorporates many design features that increase performance, decrease service and installation costs, and offer increased value over the lifespan of the unit.

The DTQP is a parallel flow terminal unit with the fan positioned outside of the primary airstream and runs intermittently, when the primary air is off. Parallel flow or variable volume fan powered terminals operate in two distinct modes: variable volume, constant temperature when handling high cooling loads; and constant volume, variable temperature when heating or handling light cooling loads.

THE END RESULT

Inspired by Cedric Price’s Fun Palace, an unrealized design from the 1960s, The Shed takes moving architecture to the next level. The design team truly created a building that could meet the needs of the unknown patron, one that could last multiple generations and be a center of attraction in an ever-changing area of the city for many years to come.

It’s bold yet functional, futuristic without being overly technical. The Shed was worth every moment we waited for it, from concept to completion. The design team was able to perfectly blend new technology and innovations into the perfect one-of-a-kind building.





605 Shiloh Road
Plano TX 75074
ofc: 972.212.4800
fax: 972.212.4884

Redefine your comfort zone.™ | www.titus-hvac.com

 **Titus**
Redefine your comfort zone.™