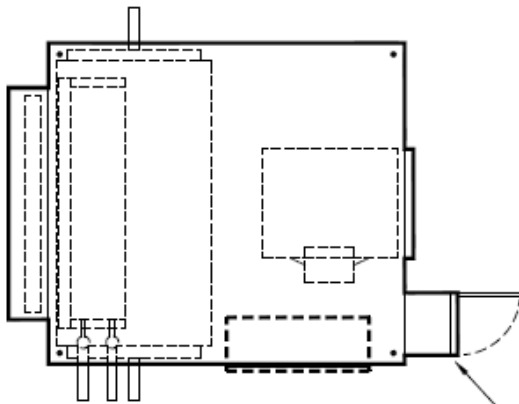


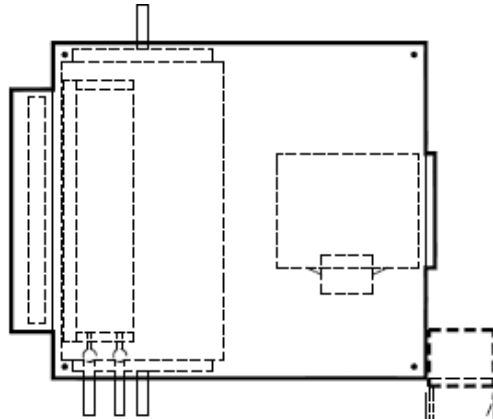
## TBHD Horizontal DDBC Alternate Control Enclosure Mounting

Alternate Locations Control Enclosure Mounting Horizontal BCU, Direct Drive



**TOP VIEWS**

STANDARD CONTROL ENCLOSURE MOUNTING LOCATION, SEE NOTES 2 & 5



10-1/4" [260] MAX.

□ ALTERNATE LOCATION 2 (SEE NOTES 2 & 4)

□ ALTERNATE LOCATION 1 (SEE NOTES 2 & 4)

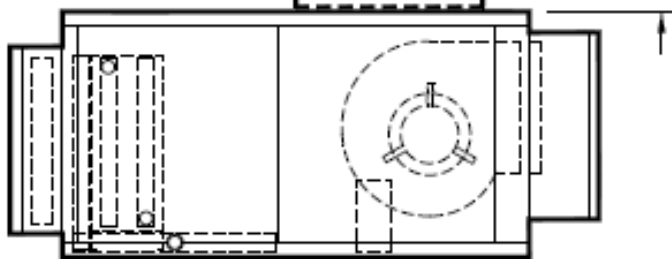
20" [508] MAX.

4" [102] TYP.

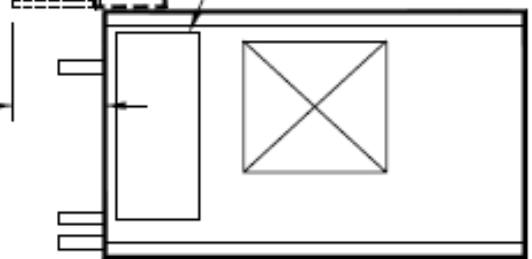
10-1/4" [260] MAX.

FRONT MOUNTED CONTROL ENCLOSURE MAY BE INSTALLED FACING SIDE AS ALTERNATE 2, (SEE NOTES 2 & 4)

10-3/4" [273] MAX. TYP.



**SIDE VIEW**



**FRONT VIEW**

**Notes:**

1. All dimensions are Inches [millimeters]. All dimensions are  $\pm 1/4$ " [6mm]. Metric values are soft conversion.
2. Right hand unit shown, left hand unit opposite. Motor/drive location may be specified Left or Right hand. Standard control enclosure and alternate control enclosure locations match motor/drive position.
3. Provide sufficient clearance to permit access to controls and comply with applicable codes and ordinances.
4. Enclosure may overhang unit cabinet up to  $1/2$ " [13]
5. Enclosure cover hinging direction may vary.
6. Model TBHD unit shown.

New	08/04/22	SP	New Release
Revision Date	Version Date	Initiated By	Description