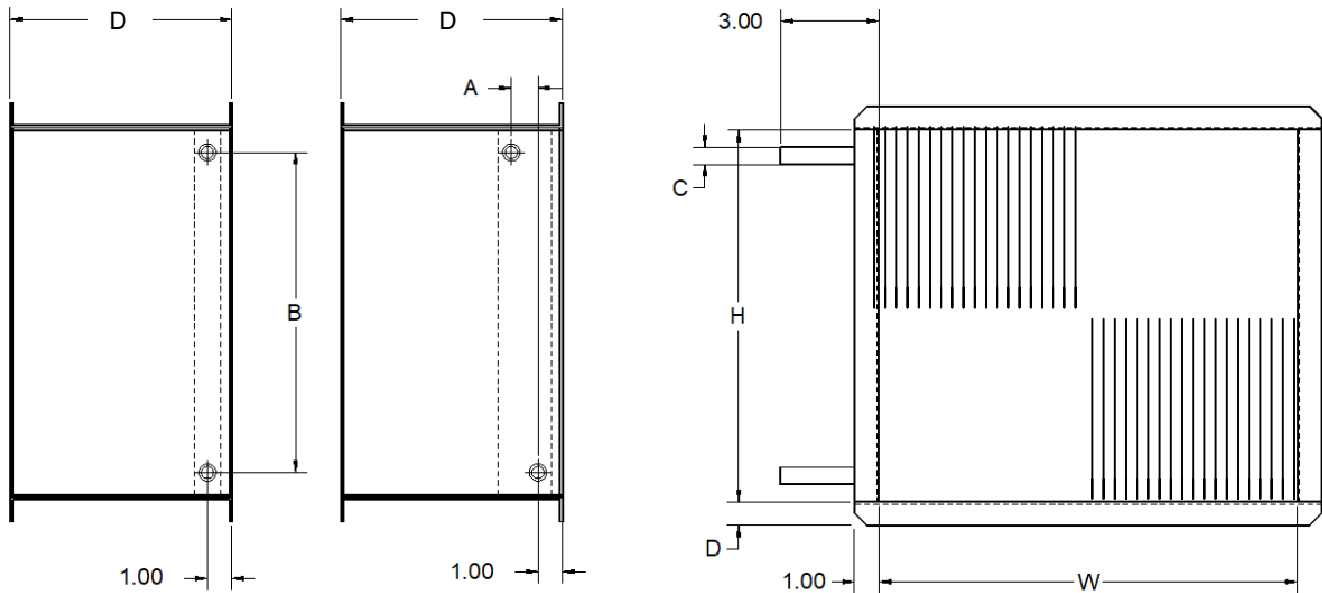


## TFS, TFS-F Hot Water Reheat



1 ROW

2, 3, 4 ROW

Size	H	W	D	1 Row				2 Row			
				A	B	C	D	A	B	C	D
A	10	18 <sup>5</sup> / <sub>8</sub>	9 <sup>1</sup> / <sub>2</sub>	-	8 <sup>3</sup> / <sub>4</sub>	1/2	1	-	8 <sup>3</sup> / <sub>4</sub>	5/8	1
B,C	12 <sup>1</sup> / <sub>2</sub>	20 <sup>1</sup> / <sub>2</sub>	9	-	11 <sup>3</sup> / <sub>4</sub>	5/8	1	1	11 <sup>3</sup> / <sub>4</sub>	5/8	1
D,E	17 <sup>1</sup> / <sub>2</sub>	25	9	-	16 <sup>1</sup> / <sub>4</sub>	5/8	1 <sup>1</sup> / <sub>4</sub>	1	16 <sup>3</sup> / <sub>4</sub>	5/8	1 <sup>1</sup> / <sub>4</sub>

Size	H	W	D	3 Row				4 Row			
				A	B	C	D	A	B	C	D
B,C	12 <sup>1</sup> / <sub>2</sub>	20 <sup>1</sup> / <sub>2</sub>	9	-	11 <sup>3</sup> / <sub>4</sub>	5/8	1	-	11 <sup>3</sup> / <sub>4</sub>	5/8	1
D,E	17 <sup>1</sup> / <sub>2</sub>	25	9	-	16 <sup>1</sup> / <sub>4</sub>	7/8	1 <sup>1</sup> / <sub>4</sub>	-	16 <sup>3</sup> / <sub>4</sub>	7/8	1 <sup>1</sup> / <sub>4</sub>

Unit Size	1 Row		2 Row	
	Water Weight (lbs)	Water Volume (gal)	Water Weight (lbs)	Water Volume (gal)
A	1.3	0.15	2.4	0.28
B,C	1.5	0.18	2.7	0.33
D,E	2.6	0.31	4.7	0.56

Note: For additional rows, add difference between the 1 and 2 rows coil capacity.  
8.34 LBS / gallon of water

### General Description

- Coils have 1/2 inch O.D. copper tubes, 0.016 thick wall.
- Aluminum plate fins, 10 per inch.
- Casing is 20 Gauge galvanized steel.
- Copper male solder connections.
- Flanged duct connection.
- Leak tested to 450 PSIG.
- Maximum working pressure, 360 PSIG
- Maximum 200 degree F water