



Century Engineering Headquarters

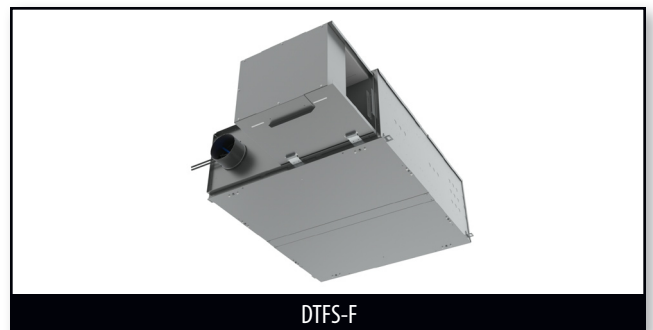
GREEN CASE STUDY

CLIENT: Century Engineering	REPRESENTATIVE OFFICE: J-K Mechanical Product	ARCHITECT/DESIGNER: Hord/Coplan/Macht	LOCATION: Hunt Valley, Maryland
---------------------------------------	---	---	---

ABOUT THE PROJECT

Century Engineering, Inc is a full-service consulting, planning, engineering, surveying and inspection firm that services the Mid-Atlantic Region. Having outgrown their previous facility, a new and more innovative structure was needed to house the 350 employees currently working today. Their new corporate headquarters was recently awarded the LEED Gold Certification for NC by the U.S. Green Building Council. It is the first privately owned project in Baltimore to achieve such an honor.

This Green Building incorporates many sustainable design features. The four-story 58,000 square foot building has many windows to take advantage of the natural light throughout the day. The plumbing system is designed to reduce water consumption by 28% while the electrical systems are designed to drastically reduce energy usage as well. The engineering firm also incorporates wind-generated power throughout the structure, has bicycle storage,



DTFS-F



TMS



incorporates lighting fixtures with individual and automated controls, and provided either carpooling or hybrid vehicles for company usage. All of these green elements contributed greatly toward earning points toward the building's certification.

THE TITUS SOLUTION

Titus was pleased to provide the air distribution for this Green Building. The DTFS-F Fantom terminal unit and the TMS ceiling diffuser were excellent choices for this open-ceiling environment. The DTFS-Fs installed in the engineering firm are variable air volume (VAV) fan powered terminal units with high efficiency ECM motors. They operate so quietly that employees are able to do their work without noticing the units being hung directly over them.

The TMS is a square ceiling diffuser that delivers supply air in a true 360 degree pattern with low pressure drop. The uniform, nearly horizontal jet from the outer cone maintains effective room air distribution even when the air volume varies over a considerable range. All sizes consist of three cones giving a uniform appearance where different neck sizes are used in the same area. All together, the HVAC system is designed to reduce energy consumption by 35% in the new facility.



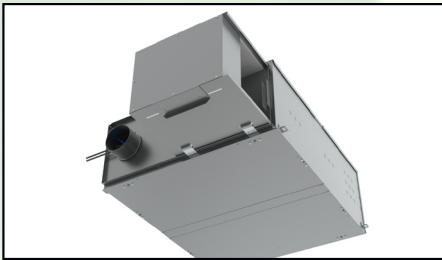


THE END RESULT

Designed by Hord-Coplan-Macht, the new Century Engineering Corporate Headquarters is a great achievement in Green Building design. In its first year of operation, the building was able to save the company \$100,000 dollars in energy costs.

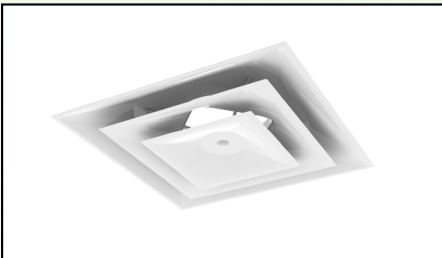


Titus Products List



DTFS-F

The DTFS-F Phantom is a fan powered terminal unit with an energy efficient fan motor.



TMS

The TMS is a square ceiling diffuser that delivers supply air in a true 360 degree pattern with low pressure drop.