

Square and Rectangular Diffusers

TDC / TDCA

- Titus Series TDC diffusers handle an unusually large amount of air for a given pressure drop and noise level
- Pleasing appearance harmonizes with various architectural details - especially modular ceiling systems
- Maintains an unbroken horizontal flow pattern from maximum cfm down to minimum. Excellent performance in variable air volume systems.
- In the TDCA and TDCA-AA models, movable vanes, accessible from the face, adjust the discharge pattern from horizontal to vertical
- Core is easily removable from the face of the diffuser
- Lever operator on the optional Model AG-95 damper allows easy volume adjustment from the face of the diffuser
- Extremely flexible, with cores available for 1-, 2-, 3- or 4-way horizontal flow
- Material is 22-gauge steel or aluminum with miscellaneous steel components



TDC / TDCA

- For a uniform face appearance on all neck sizes, specify an 18 x 18" dimension A size and the desired round neck size. This is available in 24 x 24" lay-in module size only.

MODELS:

Steel Models:

TDC / with fixed discharge

TDCA / with adjustable discharge

Aluminum Models:

TDC-AA / with fixed discharge

TDCA-AA / with adjustable discharge

FINISH:

Standard Finish - #26 White

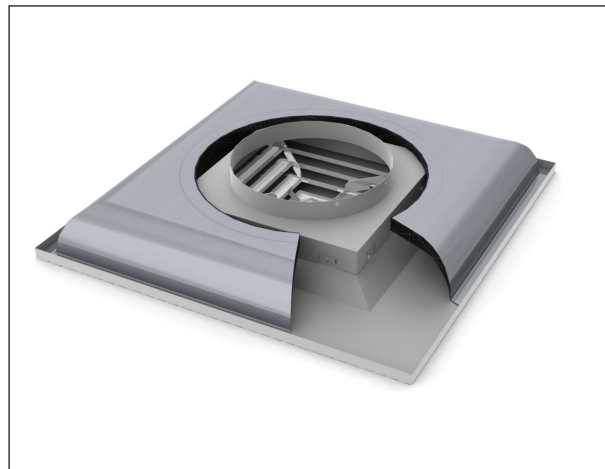
OVERVIEW

Louvered Face / High Capacity

Titus Series TDC diffusers handle an unusually large amount of air for a given pressure drop and noise level. Their pleasing appearance harmonizes with various architectural details, especially in modular ceiling systems.



See website for Specifications



Cutaway view of the TDC with an insulated blanket