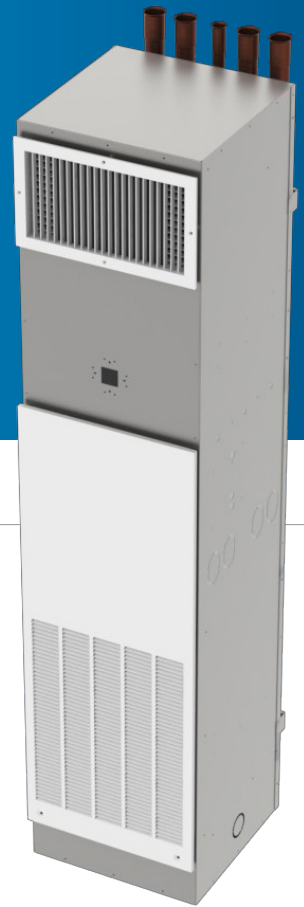


# NO SCREWS. TOOLS. PROBLEMS.

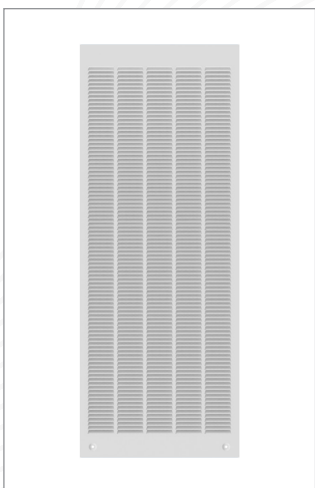


Frequently the bane of architects and decorators, the vertical stack fan coil stamped grille can now be replaced by three exciting options. Attractive and stylish make plain and ordinary a thing of the past. Forget about having to tolerate a scratched, deteriorating access panel, not to mention trying to find the right tool to remove it!

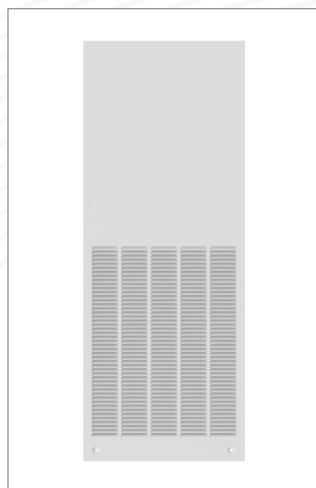
The standard 1/2" or full stamped return panel anchors the product category. Made of 18 gauge, galvanealed steel with powder coated, polyester paint, it has withstood the test of time and acceptability. Coupled with an aluminum, double deflection supply grille, this combination will serve a multitude of functions at a high level of performance.

Rounding out the line is a smooth front panel designed to allow return air to enter underneath all four exterior edges for different presentations such as matching wall-paper covering.

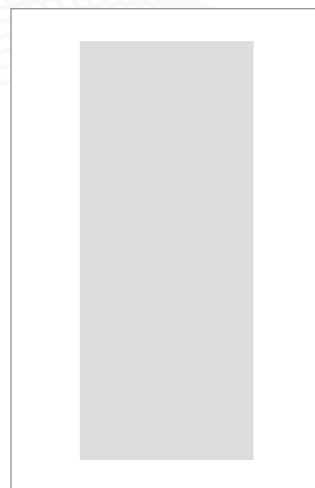
When you are looking for the very best there is only one obvious choice – Titus!



Standard Full Stamped



Standard 1/2" Stamped



Smooth Front

