



San Jose Public Library - Hillview Branch

San Jose, California

clever. creative. comfort.

Client - San Jose Public Library System
Representative Office - Norman Wright Company
Architect - AEDIS Group
LEED Certification - None



ABOUT THE PROJECT

San Jose, California has quickly become one city in the United States that is committed to improving its library system. The Hillview Branch Library is one of many libraries that the city recently opened to enhance the surrounding community. Located next to a school, this branch is strategically placed to make a difference in the community for several generations.

The design team from AEGIS Group, the contractors and community leaders involved in creating the Hillview Branch Library created an impressive interior space that was influenced by the surrounding landscape. It offers a friendly and inviting atmosphere for the young and old to experience. The library contains easily recognizable areas for youth, teens and adults. Toddlers and young children are able to explore books, dvds and their entire space allocated for them safely while teenagers have access to not only books, but a high-tech area that combines amenities of today with a look toward the future.

Green Building design and sustainable elements were also designed into the library. They include a storm water detention pond, use of recycled material throughout the facility, excellent use of natural light, and a



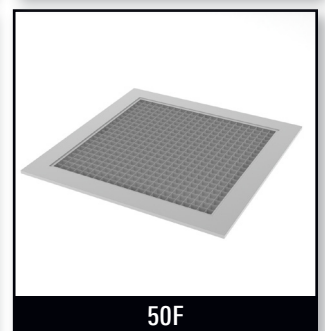
MCD



DESV



ML



50F

San Jose Public Library - Hillview Branch

San Jose, California

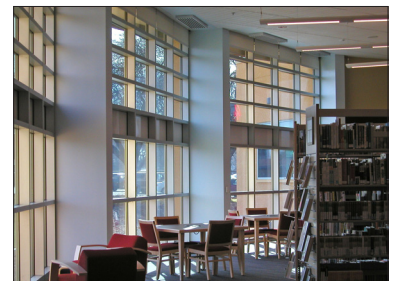


superior HVAC system.

THE TITUS SOLUTION

Titus was pleased to provide the air distribution products that are featured in the new library. Our products were selected for their superior performance and aesthetics. The main diffuser featured in the Hillview Branch is the MCD ceiling diffuser. This modular core diffuser is extremely flexible. The Titus MCD is a square modular core diffuser that can have its air pattern adjusted for a 1-, 2-, 3-, or 4-way pattern after it has been installed. The MCD maintains a horizontal flow pattern from maximum to minimum cfm, making it an excellent choice for variable air volume systems.

Other Titus products featured in the library are the 50F eggcrate grille, the ML linear slot diffuser and the DESV single duct terminal. The 50F is offered in $\frac{1}{2} \times \frac{1}{2} \times \frac{1}{2}$ -inch, $\frac{1}{2} \times \frac{1}{2} \times 1$ -inch, or $1 \times 1 \times 1$ -inch core sizes. The Titus ML Modulinear diffuser is a high performance, high quality linear slot diffuser. The unique "ice tong" deflector blades allow both changes in air volume and direction from the face of the diffuser. This diffuser is also available in 1 through 8-slot configurations with the exception of the ML-40, which is available in 1 through 4-slot configurations. The DESV is unique as it incorporates many design features that increase performance, decrease service and installation costs, and offer increased value, over and above this basic function.



San Jose Public Library - Hillview Branch

San Jose, California



THE END RESULT

The Hillview Branch Library has become a huge success for the city. Students now have a conveniently located facility that offers many alternatives for after school activities. Parents can now partner with the library for many years to come and benefit from such a close resource within the community.



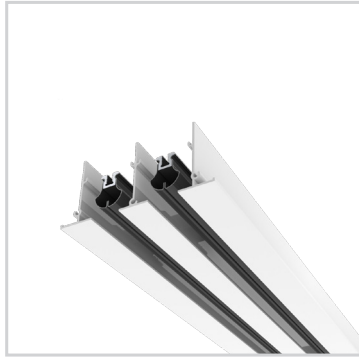
San Jose Public Library - Hillview Branch

San Jose, California

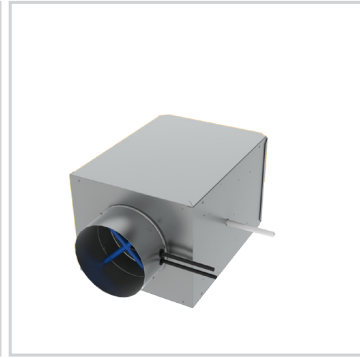
Titus Products List



MCD



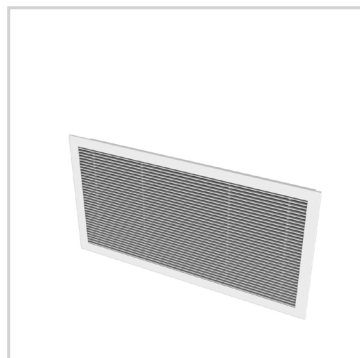
ML



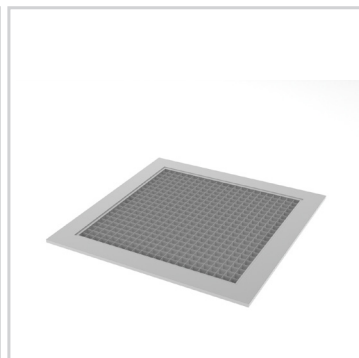
DESV



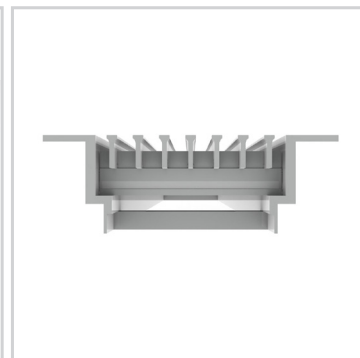
MPI



1700 L/S



50F



CT

Address - 605 Shiloh Rd Plano Texas 75074

Office - 972.212.4800

Fax - 972.212.4884

E-mail - titus@titus-hvac.com

Websites - www.titus-hvac.com | www.titus-energysolutions.com

© Copyright Titus 2012 | All rights reserved

