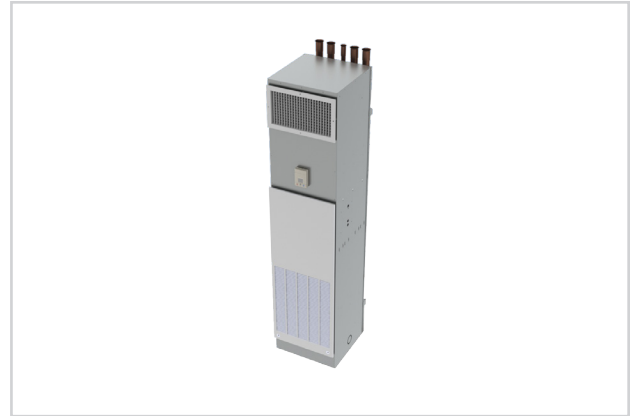


TVSR

- Performance AHRI Certified to Standard 440
- Sound Performance tested as per AHRI Standard 350-2000
- ETL-Listed, Constructed in compliance with ANSI/UL 1995 Standard
- High-efficiency EC motor available for higher energy efficiencies
- High-efficiency motor, SCR, DWDI blowers and Electric heat control available for quite operations
- Chilled Water, Hot Water and DX coils with factory mount or field install piping package available
- Single or Double Supply outlets and sight and sound baffles available



TVSR

MODEL:

TVSR

OVERVIEW

Factory assembled, vertical high-rise building TVSR fan coils are designed for free-blow or ducted, concealed installations, suitable for hotel, motel and apartment building applications.

OPTIONAL FEATURES INCLUDE:

Construction

- » Primary / Secondary arrangements
- » Foil-faced fiberglass insulation
- » Elastomeric, closed-cell-foam insulation
- » EcoShield Liner
- » 1" pleated filter (MERV 8)
- » Synthetic media
- » Manual or motorized outside-air damper
- » Blower shield

Decorator Front Panel

- » Recessing frame
- » Full-faced aluminum grille

Supply Air

- » Double deflection discharge grille(s)
- » Double outlets
- » Sight and sound baffles for double outlet units
- » Opposed blade damper

Coils

- » Automatic air vents
- » Stainless steel coil casings



See website for Specifications

Drain Pans

- » Stainless steel construction with external insulation
- » Removable for cleaning

Fan Assemblies

- » 208-230 & 277 volt, single-phase, three-tap PSC motors
- » 115, 208-230 & 277 high-efficiency EC motor

Electrical

- » SCR fan speed controller
- » Fan relay packages
- » Silent, solid state fan relays
- » Toggle disconnect switch
- » Condensate overflow switch (drain pan)
- » Main fusing
- » Unit and remote mounted three speed fan switches

Electric Heat

- » Manual-reset, secondary thermal limit
- » Silent relay / contactors
- » Door interlocking disconnect switches
- » Main fusing

Piping Packages

- » Factory assembled and installed
- » ½", 2-way and 3-way, normally closed, two-position electric motorized valves
- » Stainless steel braided hoses (threaded swivel connections) for thermal expansion, including isolation ball valves with memory stop
- » Fixed and adjustable-flow control devices
- » P/T ports and Y-strainers
- » Modulating control valves
- » High-pressure, close-off actuators (50 PSIG max)

Thermostats

- » Analog, digital display, or programmable
- » Unit mounted and wall mounted
- » 2-pipe and 4-pipe control sequences
- » Automatic and manual changeover
- » Integral, three-speed, fan switches
- » ADA mounting location on front panel or unit sides

Risers

- » Type-M or Type-L copper with swaged connections
- » ¾" to 3" diameters
- » ½" and ¾" closed-cell insulation
- » Type-M copper condensate riser
- » Riser extensions
- » Riser cover
- » Ship in advance risers