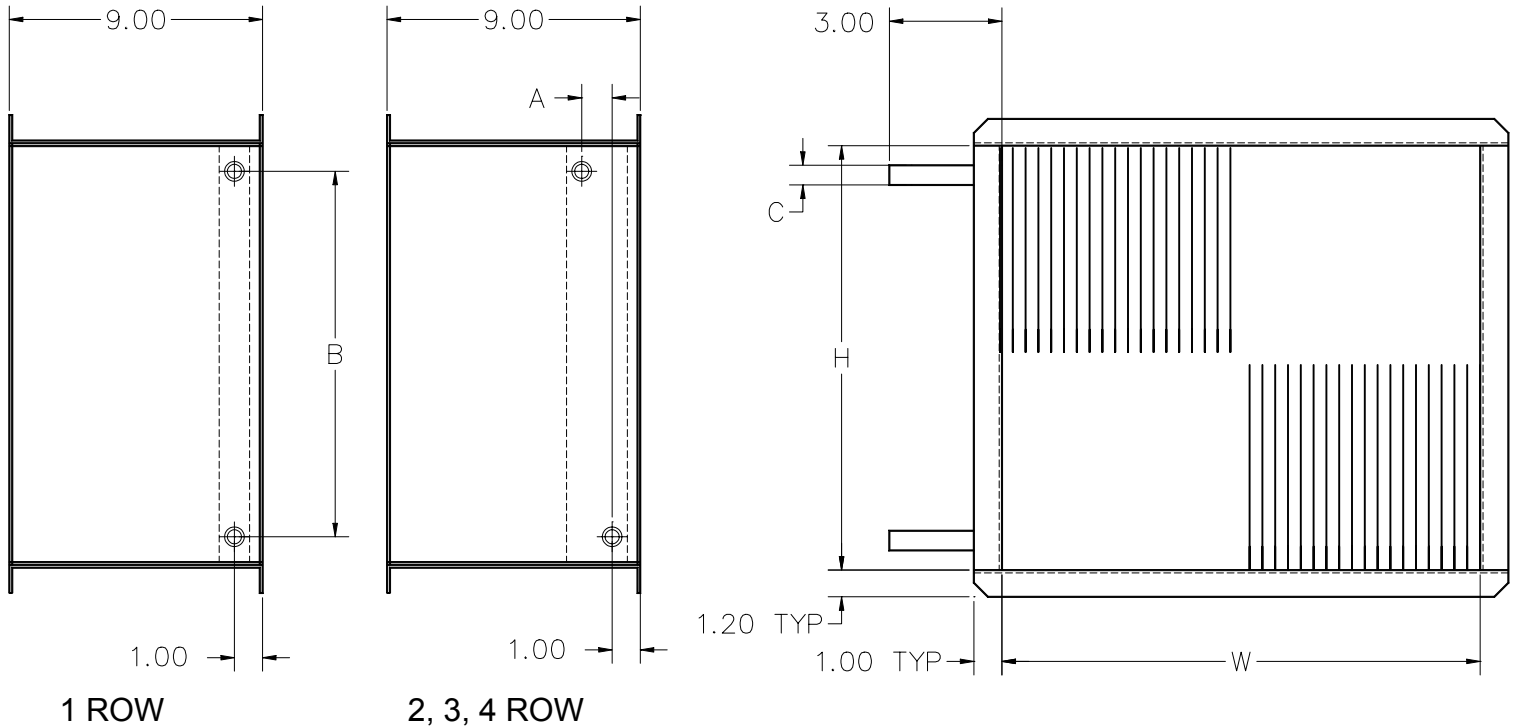


TQP - TQS Hot Water Reheat



TQP Size	H	W	1 Row			2 Row		
			A	B	C	A	B	C
2 - 3 - 4	15	17	-	13 3/4	5/8	1	13 3/4	5/8
5 - 6	17 1/2	25	-	16 1/4	5/8	1	16 3/4	5/8

TQP Size	H	W	3 Row			4 Row		
			A	B	C	A	B	C
2 - 3 - 4	15	17	2 3/16	14 1/4	7/8	3 1/4	14 1/4	7/8
5 - 6	17 1/2	25	2 3/16	16	7/8	3 1/4	16 3/4	7/8

TQS Size	H	W	1 Row			2 Row		
			A	B	C	A	B	C
2 - 3 - 4	15	17	-	13 3/4	5/8	1	13 3/4	5/8
5 - 6 - 7	17 1/2	25	-	16 1/4	5/8	1	16 3/4	5/8

TQS Size	H	W	3 Row			4 Row		
			A	B	C	A	B	C
2 - 3 - 4	15	17	2 3/16	14 1/4	7/8	3 1/4	14 1/4	7/8
5 - 6 - 7	17 1/2	25	2 3/16	16	7/8	3 1/4	16 3/4	7/8

General Description

- Coils have 1/2 inch O.D. copper tubes, 0.016 thick wall.
- Aluminum plate fins, 10 per inch.
- Casing is 20 Gauge galvanized steel.
- Copper male solder connections.
- Flanged duct connection.
- Leak tested to 300 PSIG.
- Maximum working pressure, 240 PSIG
- Maximum 200 degree F water

Unit Size	1 Row		2 Row	
	Water Weight (lbs)	Water Volume (gal)	Water Weight (lbs)	Water Volume (gal)
2,3,4	1.6	0.19	2.9	0.35
5,6,7	2.6	0.31	4.7	0.56

Note: For additional rows, add difference between the 1 and 2 rows coil capacity.
8.34 LBS / gallon of water

This submittal is meant to demonstrate general dimensions of this product. The drawings are not meant to detail every aspect of the product. Drawings are not to scale. Titus reserves the right to make changes without written notice.



605 Shiloh Road • Plano, Texas 75074 • 972-212-4800

All rights reserved. No part of this work may be reproduced or transmitted in any form or by any means, electronic or mechanical, including photocopying and recording, or by any information storage retrieval system without permission in writing from Air Distribution Technologies