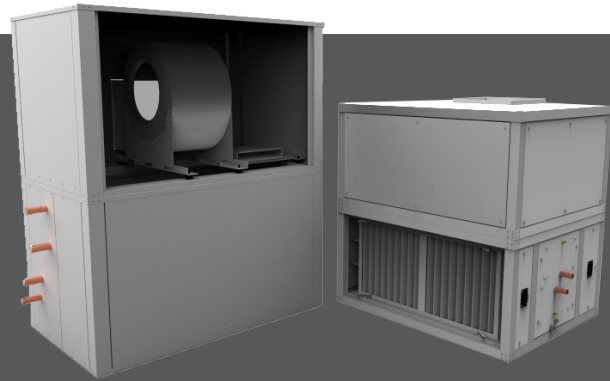


## Modular Air Handler Belt Drive Series

air handlers

### MAB

- ETL-listed. Constructed in compliance with ANSI/UL 1995 Standard
- High efficiency coil – 4-row seamless  $\frac{3}{8}$ " OD (MAB 08 & 12),  $\frac{1}{2}$ " OD (MAB 16 & 20), and  $\frac{5}{8}$ " OD (MAB 30 thru 80) copper tubes with 10 aluminum fins per inch for 2-pipe applications
- Pipe entry is right hand on the side of the cabinet as you are looking at the filter (in the direction of the airflow)
- Manual air vent
- Permanently lubricated ball bearing blowers. Blower wheels are belt-drive, double-inlet, forward-curved, and factory balanced
- Condensate pan fabricated of heavy gauge 304 stainless steel with three-dimensional slope for positive drainage
- Cabinet fabricated of heavy gauge galvanealed steel, specially coated on the outside with powder-coated enamel paint and lined with  $\frac{3}{4}$ ", dual density, 1.5-pound fiberglass insulation with antimicrobial coating on models MAB08 and 12. Models MAB08 and 12 are of one-piece construction, vertical fan discharge only. Models MAB16, 20, 30, 40, 60 and 80 are of two-piece construction with each piece individually packaged for shipment; optional fan discharge arrangements are achieved by field repositioning of the access panels.
- Filters are 2" disposable with access on both sides of the cabinet



MAB



k-12 education



universities



hospitals



hotels / motels



See website for Specifications

### AVAILABLE MODELS:

MAB08 / 800 cfm  
MAB12 / 1200 cfm  
MAB16 / 1600 cfm  
MAB20 / 2000 cfm  
MAB30 / 3000 cfm  
MAB40 / 4000 cfm  
MAB60 / 6000 cfm  
MAB80 / 8000 cfm

### OVERVIEW

Titus modular blower coil units provide flexibility of design due to belt driven fans, multi-row coil capability, and available factory options. These products are designed for the common areas and large meeting rooms in hotels, motels, apartment complexes, condominiums, schools, universities, hospitals, and nursing homes.

### OPTIONAL FEATURES INCLUDE

- High efficiency coil – 6-row seamless  $\frac{3}{8}$ " OD (MAB08 & 12),  $\frac{1}{2}$ " OD (MAB16 & 20), and  $\frac{5}{8}$ " OD (MAB30 thru 80) copper tubes with 10 aluminum fins per inch for 2-pipe applications  
High efficiency coils – Chilled water 4- or 6-row seamless  $\frac{3}{8}$ " OD (MAB08 & 12),  $\frac{1}{2}$ " OD (MAB16 & 20), and  $\frac{5}{8}$ " OD (MAB30 thru 80) copper tubes with 10 aluminum fins per inch. Hot water 1- (MAB08, 12, 16, & 20 only) or 2-row seamless  $\frac{3}{8}$ " OD (MAB08 & 12),  $\frac{1}{2}$ " OD (MAB16 & 20), and  $\frac{5}{8}$ " OD (MAB30 thru 80) copper tubes with 10 aluminum fins per inch.
- Left hand pipe entry as you are looking at the filter (in the direction of the airflow)

- Motors - Standard ETL-listed motors consist of Totally Enclosed, Fan Cooled (TEFC) and Open, Drip-Proof (ODP) casing, shaded-pole 115/60/1 in  $\frac{1}{4}$  HP through 2 HP; TEFC and ODP 115/208-230/1 (wired for 115V) in  $\frac{1}{4}$  to 2 HP; TEFC and ODP 208-230/460/60/3 in  $\frac{1}{4}$  HP to 10 HP; TEFC and ODP 575/60/3 in  $\frac{1}{4}$  HP to 10 HP; other voltages, configurations, and horsepower options available, but not ETL-listed. All motor sheaves are variable-pitch and single-groove. Blower pulleys are split-tapered bushing.
- Mixing boxes, field install
- Controls for mixing boxes, field install and wire, 3-position and fully modulating packages  
**Note: Controls such as contactors, starters, and/or transformers/fan relays are supplied by others**
- Discharge plenum with adjustable double-deflection grille, (cannot be used with electric heat)
- Return air grille models
- Pleated filter, 2"
- Six" leg kit
- Cabinet liner in one" closed cell or one" IAQ fiberglass (models MAB16, 20, 30, 40, 60 and 80) insulation. Electric heat (models MAB16, 20, 30 and 40).
- Downflow or horizontal arrangement



MAB