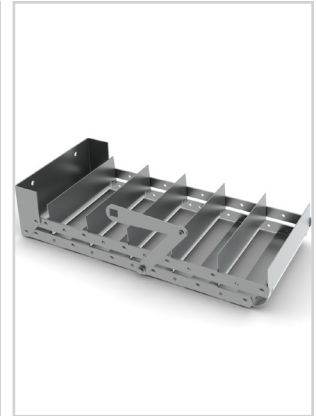


AG-45 / AG-225

- Gang-operated parallel vanes are fully adjustable from open to closed. The carefully designed vane cross-section minimizes pressure drop and turbulence. The extractor provides uniform air distribution across the stub duct or diffuser neck.
- Factory assembled, installs easily with two sheet metal screws (screws by others.) Choice of three operators as illustrated below. Maximum recommended size is 36 x 12 inches. Maximum duct velocity is 2500 fpm.



AG-45



AG-225



air balancing

MODELS:

AG-45 / 1" Spacing
AG-225 / 2" Spacing

FINISH

Standard Finish - #04 Mill

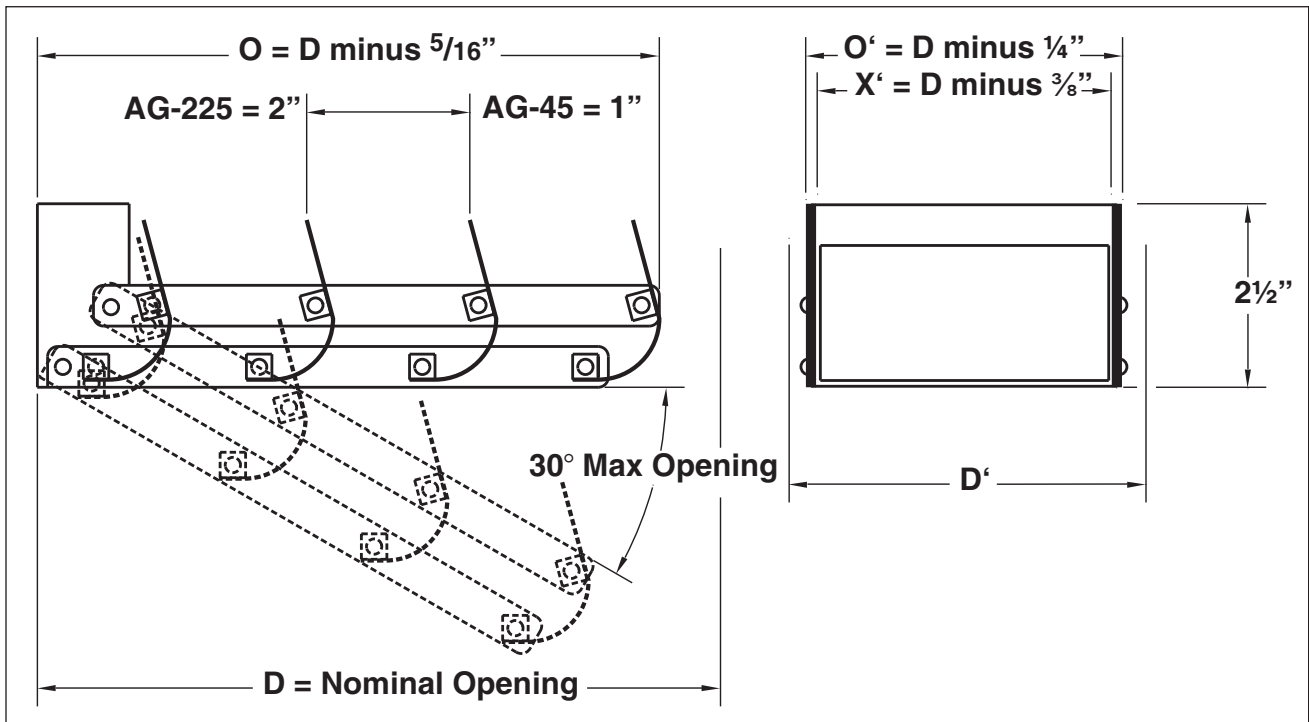
OVERVIEW

Volume Extractors

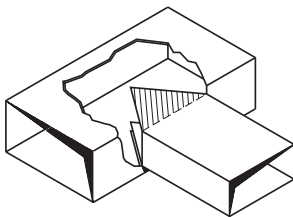
Effective air balancing begins with the balancing provisions that are designed into the HVAC system. Titus balancing devices are easy to select and specify. They are designed for quick access and adjustment and are engineered for the least possible noise, turbulence and air resistance. Titus makes available published flow factors for all Titus diffusers. This allows precision balancing to be performed in the field with accuracy based on prior test results.



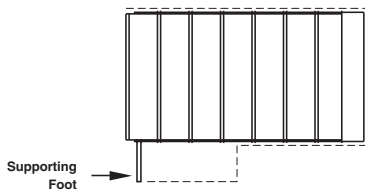
See website for Specifications



Installation Notes

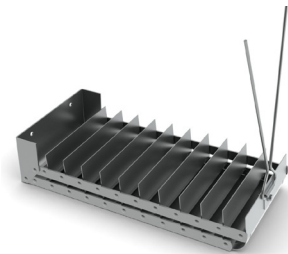


If the tops and bottoms of the main and branch ducts are in different planes, branch duct extensions above and below the extractor will improve performance.

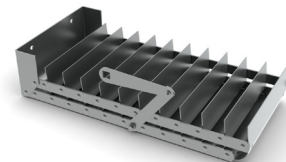


The installer is to provide a supporting foot if D exceeds 12 inches or the bottom of the main and branch ducts are not in the same plane.

With Operator #1
Push-Pull Double Wire
Locked with Sheet Metal
Screw



With Operator #2
 $\frac{3}{8}''$ Square Rotating Shaft
(Young #1) by Others



With Operator #3
Key-Operated Screw
Access through Diffuser
Face

