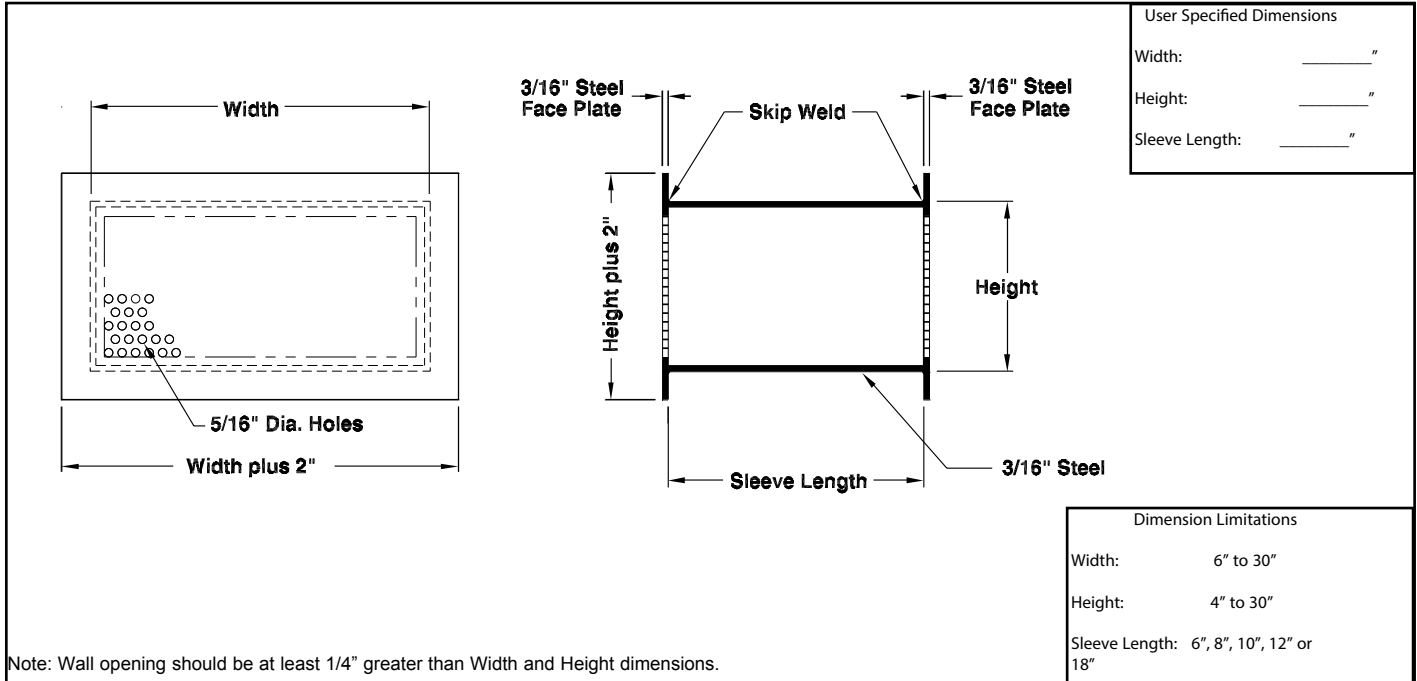


## Maximum Security Grilles and Registers

Model:  SG-PRT • Steel • Round Perforated • Transfer Grille

### General Construction



### Options and Accessories

- Anchor Bars  
3/4" diameter steel bars, 3" in height. Positioned three inches from back of face plate on top and bottom of sleeve.
- Sleeve Barrier Grille  
Constructed of 3/4" diameter steel bars with maximum 6" opening.
- #04 Mill Finish

### General Description

The TITUS model SG-PRT is a maximum security grille. The design of the grille allows a greater effective free area and air flow without compromising security and safety.

The SG-PRT is provided with two face plates welded to each end of a sleeve for block walls or for pouring in place in concrete walls.

### Standard Construction Details

- Face Plate  
3/16" steel with 5/16" diameter holes on 7/16" staggered centers and 1" border.
- Sleeve  
3/16" steel.
- Finish  
#26 White.
- All Welded Construction.