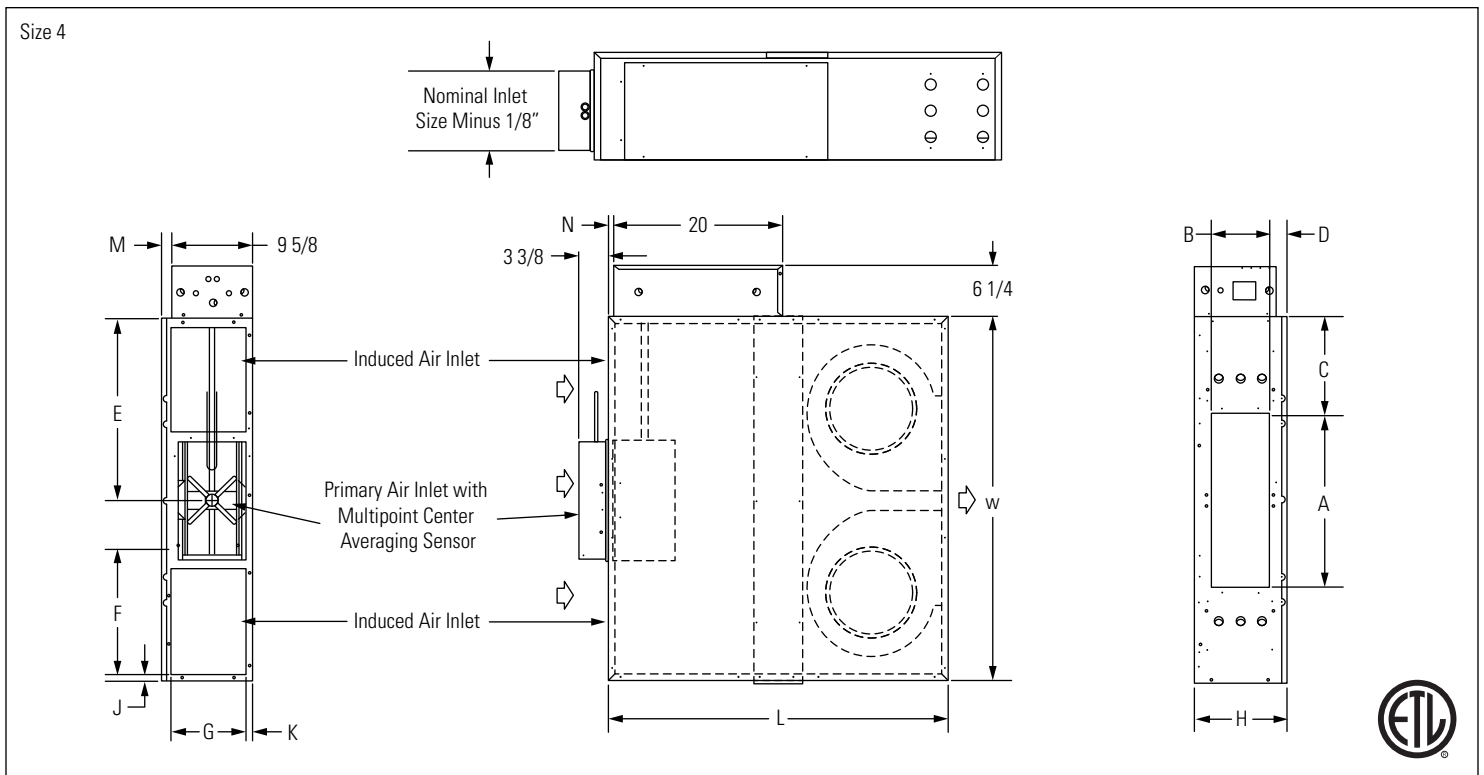
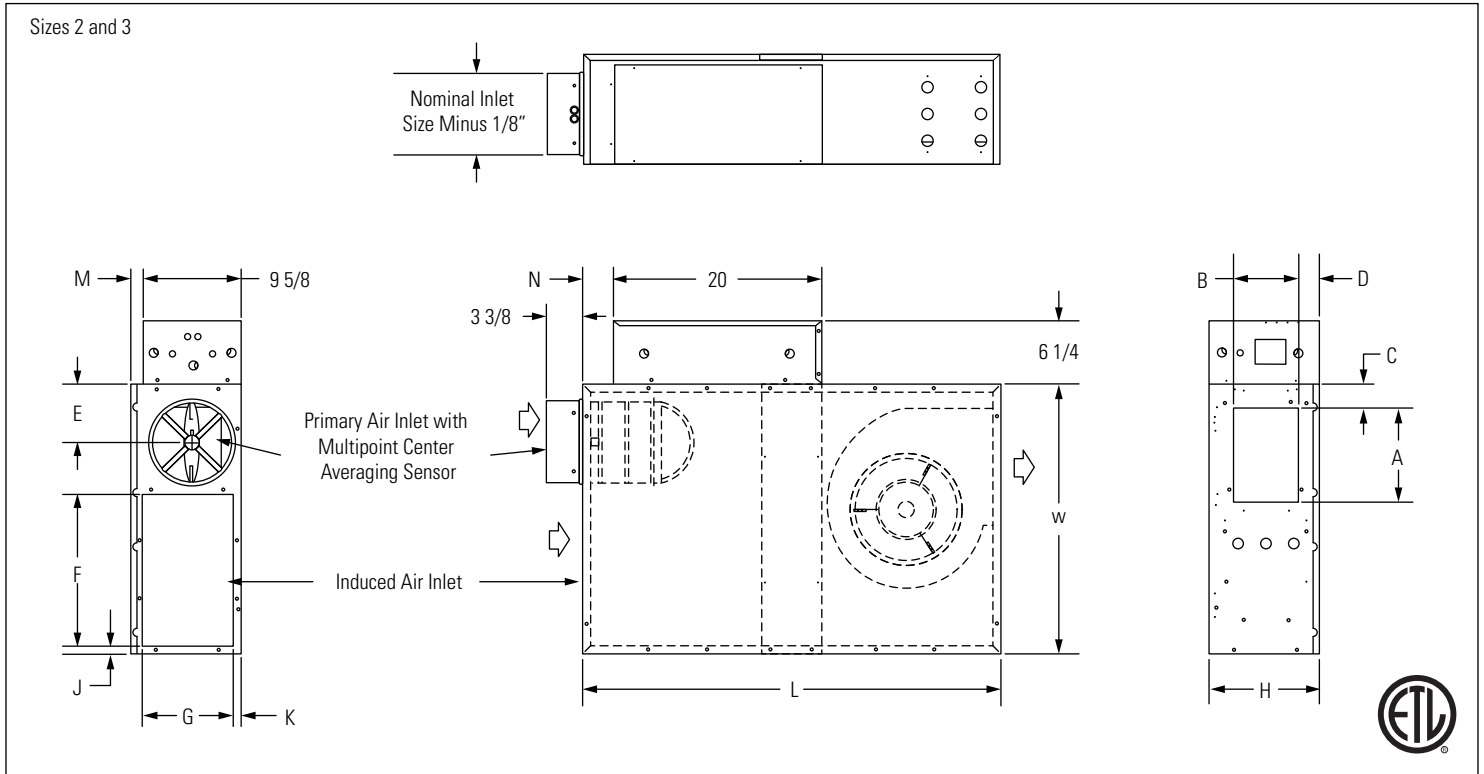


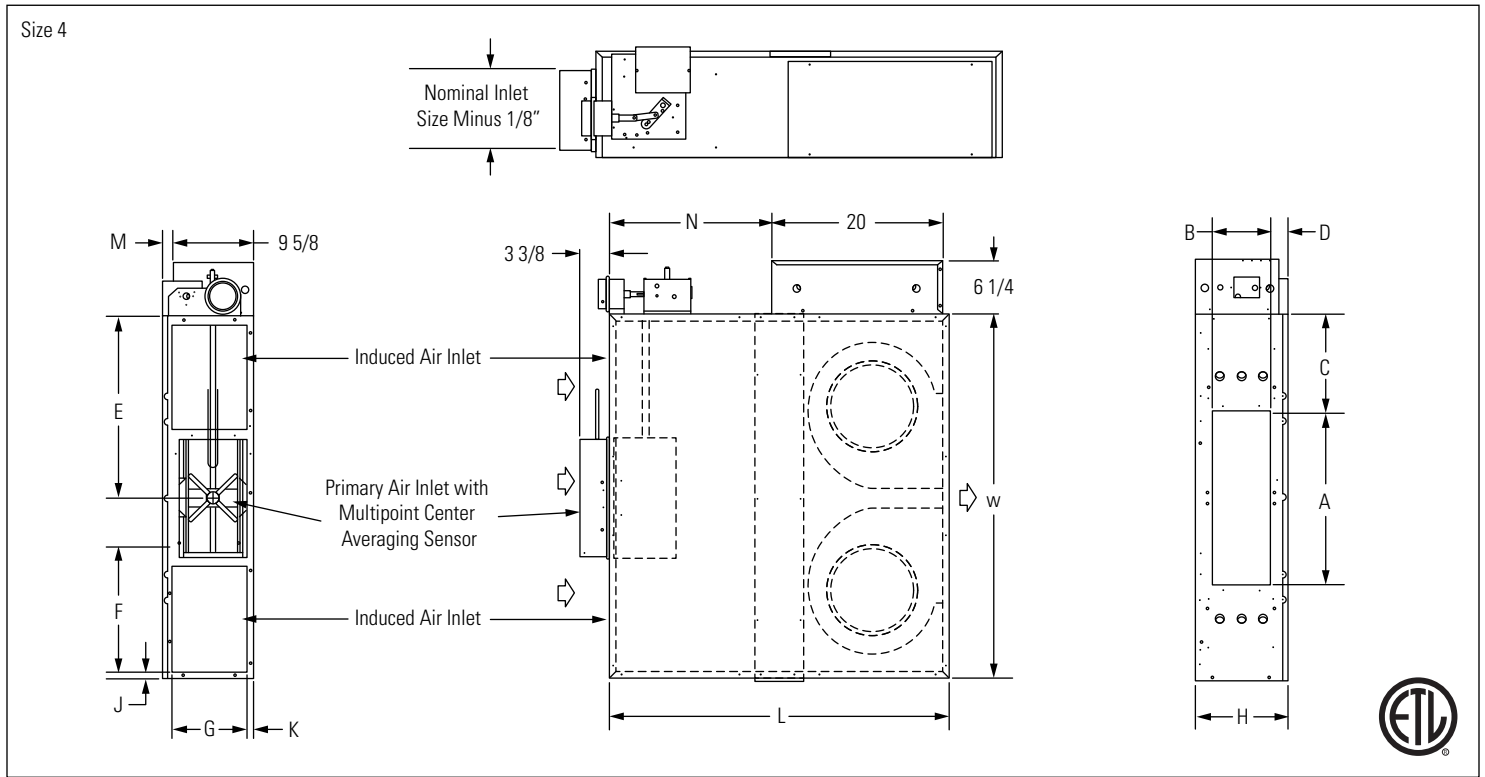
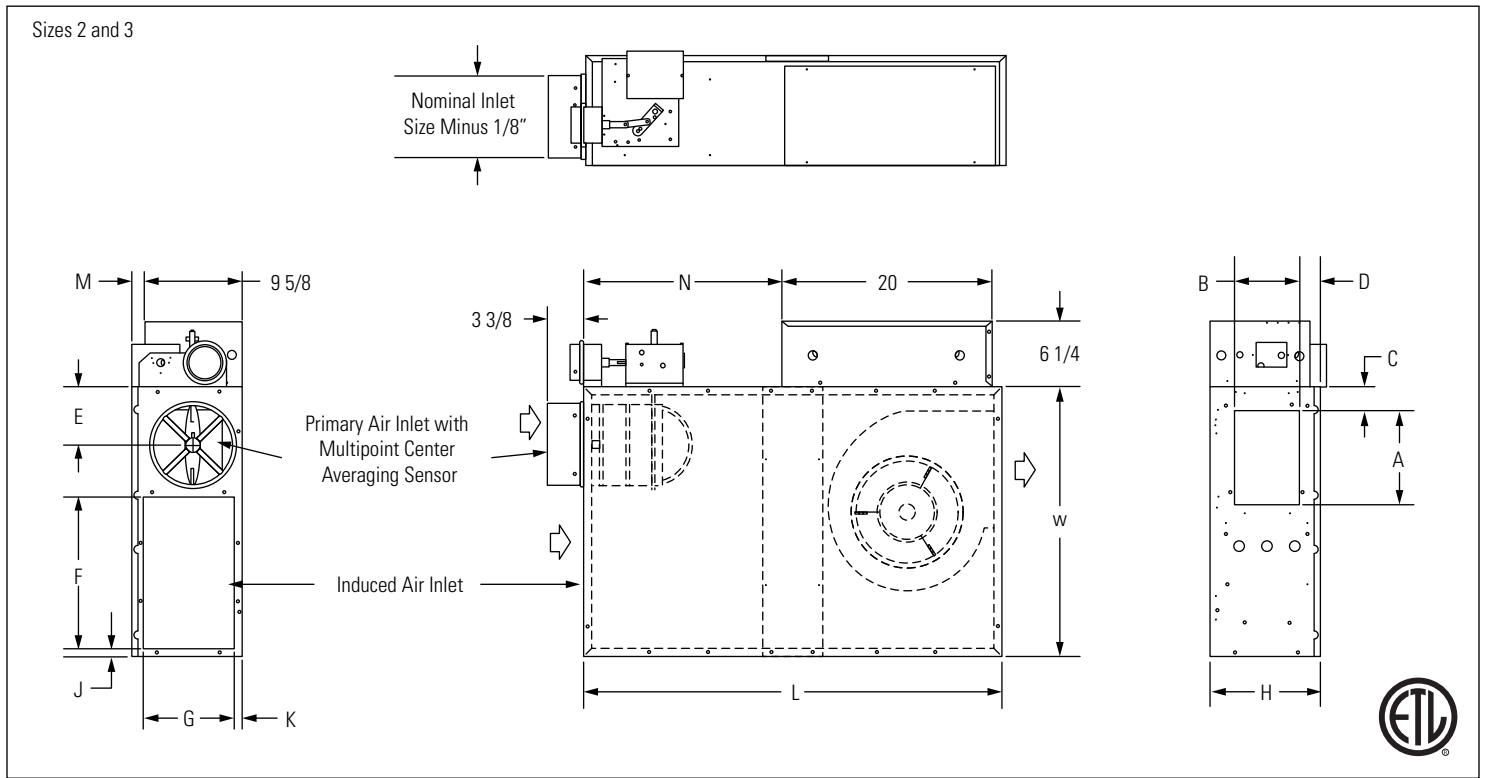
FLS

Fan Powered Terminal, Series Flow with ECM Motor
 Analog Control & Direct Digital Control, Pressure Independent, Low Profile



Left hand unit, top views shown. All dimensions are in inches. The Induced Air Inlets on unit size 4 are the same size.

Fan Powered Terminal, Series Flow with ECM Motor
Pneumatic Control, Pressure Independent, Low Profile



Left hand unit, top views shown. All dimensions are in inches. The Induced Air Inlets on unit size 4 are the same size.

Unit Size	Inlet Size	A	B	C	D	E	F	G	H	J	K	L	M	N	W
2, 3	8" Diameter	9	6 1/4	2 1/4	2 1/4	5 5/8	14 5/8	8 3/4	10 1/2	7/8	1 1/8	40 1/4	1	3	26
4	16" w x 8" h	20 1/2	6 3/4	11 1/4	1 7/8	21 5/8	10 3/8	8 3/4	10 1/2	1 1/8	7/8	40 1/4	1 1/8	3/4	43

PSC Motor Amperage Ratings

Unit Size	Motor HP	120V/1/60 FLA	208/240V/1/60 FLA	277V/1/60 FLA
2	1/6	3.9	1.6	1.2
3	1/4	5.8	2.4	1.8
4	2@1/6	8.2	3.4	2.5

FLA = Full Load Amperage, as tested in accordance with UL 1995

All fan motors are single phase, same voltage as electric coil (when supplied), with exception that 277 V motors are used with 480V, 3 phase coils (4 wire wye).

ECM Motor Amperage Ratings

Unit Size	Motor HP	120V/1/60 FLA	208V/1/60 FLA	277V/1/60 FLA
3	1/3	5.0	3.3	2.6
4	2@1/3	10.0	6.6	5.2

FLA = Full Load Amperage, rated per the motor nameplate

All fan motors are single phase, same voltage as electric coil (when supplied), with exception that 277 V motors are used with 480V, 3 phase coils (4 wire wye).

Accessories (Optional)

Check if provided.

- Induced Air Filter, 1" thick, disposable construction type.
- Toggle disconnect switch (not available on units with optional electric coils.)
- Fibre Free Liner
- 1/2" Fibre Free Liner
- 1/2" EcoShield Liner
- Fan unit fusing

Analog & Direct Control specific

- Foil Face Liner

Analog & Pneumatic Control specific

- Hanger Brackets

Pneumatic Control specific

- Metal Controller Cover
- Fan P/E switch for night setback control

Accessories (Optional)

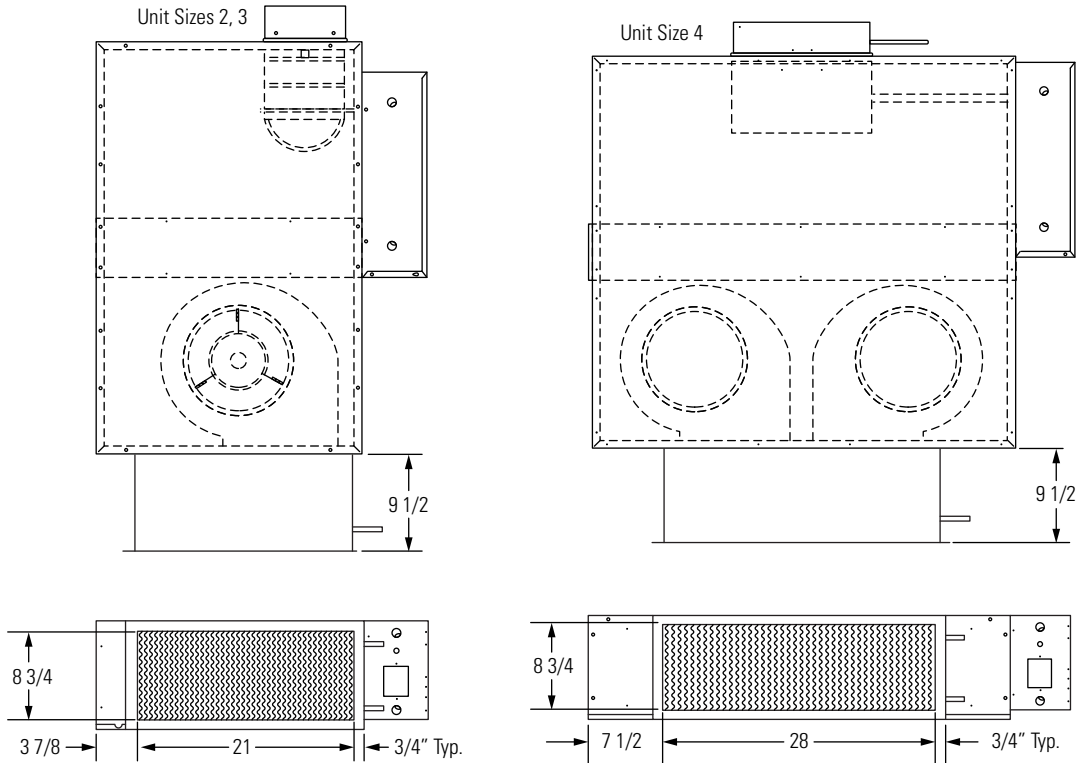
Analog Control & Direct Digital Control

Hot Water Coil Section

- 1/2" copper tubes
- Aluminum ripple fins, 10 per inch
- Connections: Male solder, 1/2" on 1 row, 5/8" on 2 row
- Coils rated and certified to AHRI Standard 410

1 Row

2 Row



Electric Coil Section Optional SCR Controlled Electric Heater (for Direct Digital Control only) Optional Lynergy Controlled Electric Heater (for Direct Digital Control only)

Standard Features

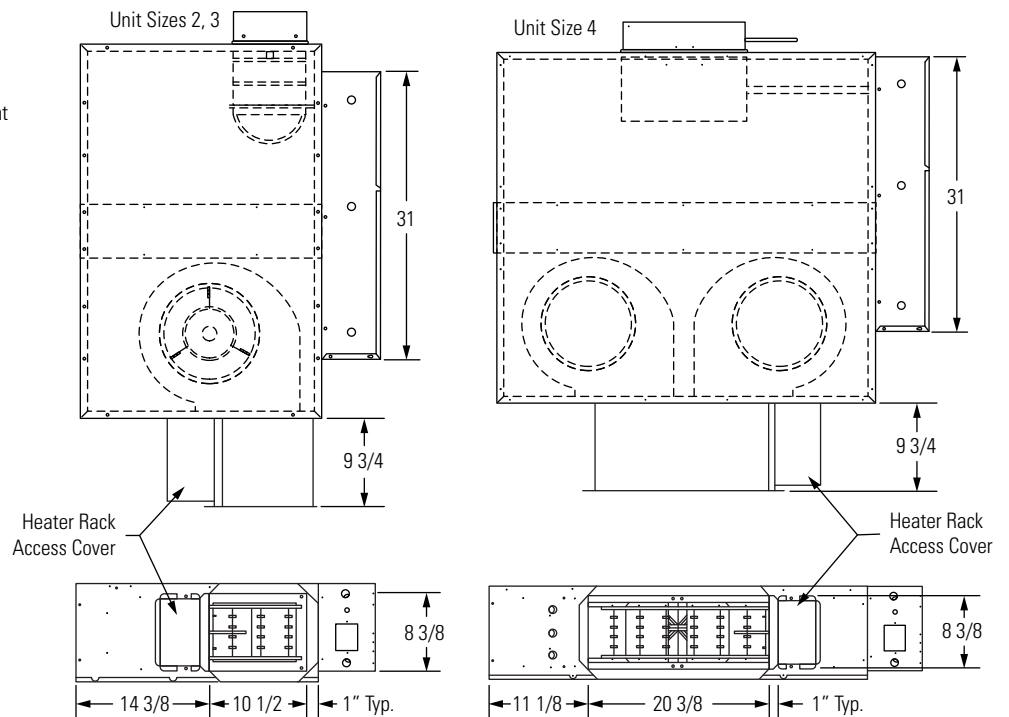
- Single side access to low voltage, high voltage, and electric heater controls.
- Automatic reset thermal cutouts, one per element
- Single point electrical connection for entire unit
- Positive pressure flow switch
- Transformer

Options

- Mercury contactors
- Fuse Block
- Disconnect switch, door interlock type
- Manual reset cutout
- Dust tight construction

Supply Voltage

- 208V, 1 ph, 60Hz
- 240V, 1 ph, 60Hz
- 277V, 1 ph, 60Hz
- 208V, 3 ph, 60Hz
- 480V, 3 ph, 60Hz*
*4 wire wye only



Accessories (Optional)

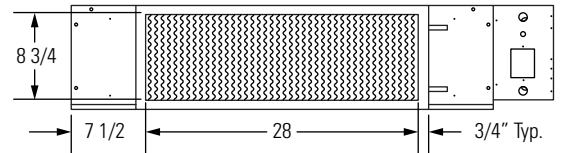
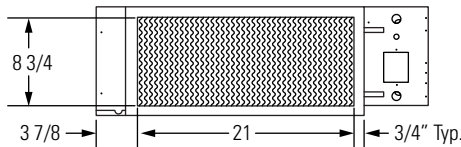
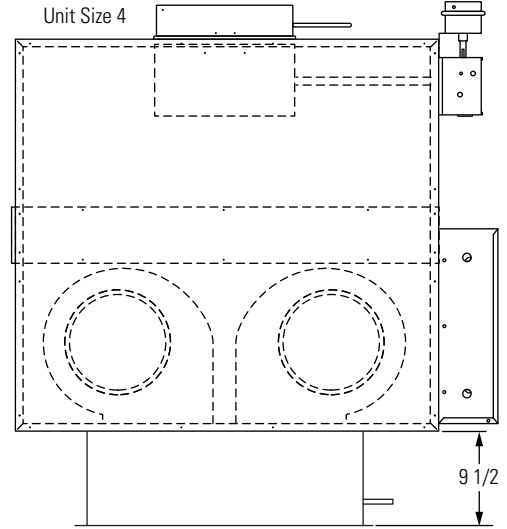
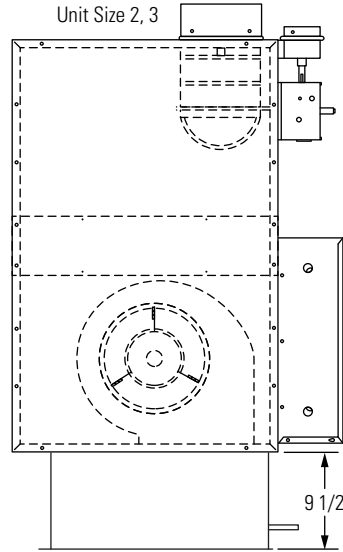
Pneumatic Control

Hot Water Coil Section

- 1/2" copper tubes
- Aluminum ripple fins, 10 per inch
- Connections: Male solder, 1/2" on 1 row, 5/8" on 2 row
- Coils rated and certified to AHRI Standard 410

1 Row

2 Row



Electric Coil Section

Standard Features

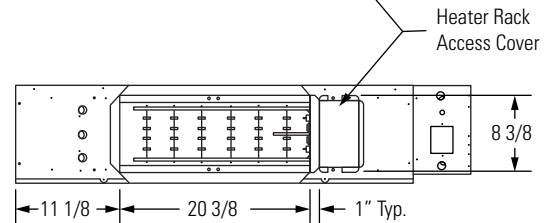
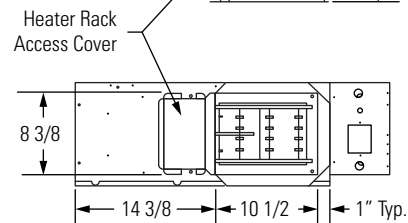
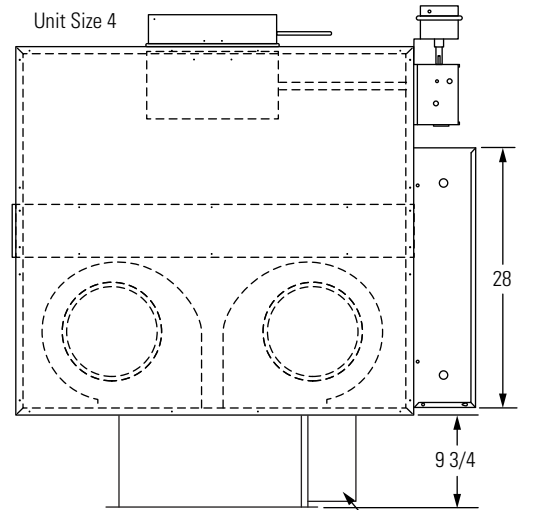
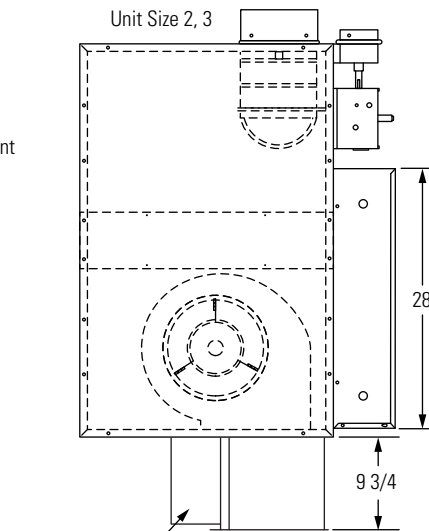
- Single side access to low voltage, high voltage, and electric heater controls.
- Automatic reset thermal cutouts, one per element
- Single point electrical connection for entire unit
- Positive pressure flow switch

Options

- Mercury contactors
- Fuse Block
- Disconnect switch, door interlock type
- Manual reset cutout
- Dust tight construction

Supply Voltage

- 208V, 1 ph, 60Hz
 - 240V, 1 ph, 60Hz
 - 277V, 1 ph, 60Hz
 - 208V, 3 ph, 60Hz
 - 480V, 3 ph, 60Hz*
- *4 wire wye only



General Description

- Heavy steel casing, with leak resistant construction.
- Dual density insulation, coated to prevent air erosion, meet requirements of NFPA 90A and UL 181.
- Bottom access panel can be removed for service.
- Pressure independent primary flow control.
- Multipoint, center averaging velocity sensor.
- Primary air flow balancing connections.
- Single point electrical connections.
- Rectangular discharge opening is designed for flanged duct connections.

Analog Control Specific

- Electronic proportional room thermostat with adjustable setpoints for temperature and airflow is included with unit.

PSC Only

- Energy efficient fan motor, permanent split capacitor type, mounted in vibration isolators
- Adjustable SCR fan speed control with minimum voltage stop.

ECM Only

- Ultra high efficiency, brushless DC ECM motor with a unique microprocessor based motor controller.
- Manual PWM controller allows simple screwdriver adjustment of fan speed.
- Efficiencies of up to 70% across the entire operating range.
- Constant volume regardless of changes in downstream static pressure allows for factory setting of cfm.

Digital Control Specific

- Remote PWM controller allows for a 0-10 v signal from the DDC controller to adjust the fan speed.

This submittal is meant to demonstrate general dimensions of this product. The drawings are not meant to detail every aspect of the product. Drawings are not to scale. Titus reserves the right to make changes without written notice.