



# Christman Company Headquarters

## GREEN CASE STUDY

<b>CLIENT:</b> Christman Company	<b>REPRESENTATIVE OFFICE:</b> Fontanesi & Kann	<b>ARCHITECT/DESIGNER:</b> SmithGroup	<b>LOCATION:</b> Lansing, Michigan
-------------------------------------	---	--	---------------------------------------

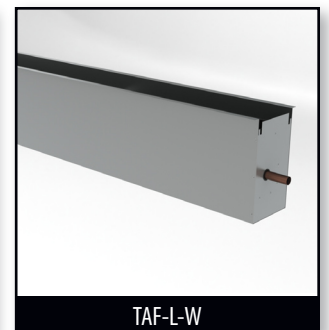
### ABOUT THE PROJECT

Built in 1928, and originally known as the Mutual Building, the new Christman Company Headquarters is a revitalized landmark building located in downtown Lansing, Michigan. With rich history and captivating interior design, the Christman team and SmithGroup faced a unique challenge of preserving the past while blending in technology from the present.

Prior to Christman Company selecting the Mutual Building as its new headquarters, the building's appearance both inside and out had declined. The historic preservation team at Christman and the architects and engineers at SmithGroup gave the building a new beginning with innovative and sustainable design concepts. The end result was a historic preservation of design from a time long since forgotten that incorporates today's Green Building concepts to take the Christman Building into the future.



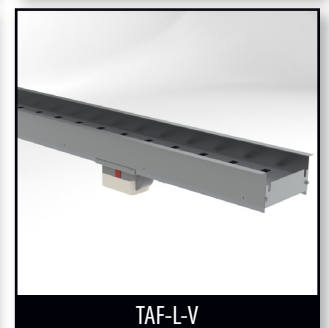
CT-TAF-L



TAF-L-W



TAF-R



TAF-L-V



## THE TITUS SOLUTION

To assist in their efforts toward being recognized as the world's first building to achieve "Double Platinum" LEED certification, Titus UnderFloor products were selected. The two LEED Platinum awards were for LEED - Core and Shell and for LEED - Commercial Interiors. The TAF-R diffuser and components from the TAF-L Perimeter System were utilized to provide the air distribution for the renovation.

The TAF-L Perimeter System was designed to address the challenges of handling perimeter loads in a modular system. This system is comprised of a modular cooling plenum, the TAF-L-V, a heating plenum, the TAF-L-W, and a linear bar diffuser, the CT-TAF-L. Both plenums are designed to be integrated with the CT-TAF-L multi-deflection linear bar diffuser and provide the necessary airflow for the building.

The TAF-R diffuser is a round underfloor product that is architecturally pleasing and designed for use in high induction raised floor applications. It is constructed of a high impact, polymeric material that durable enough to resist foot traffic. This diffuser has the fastest installation in the industry with the new spring clip design and can be relocated easily to another location by simply relocating the floor panel.



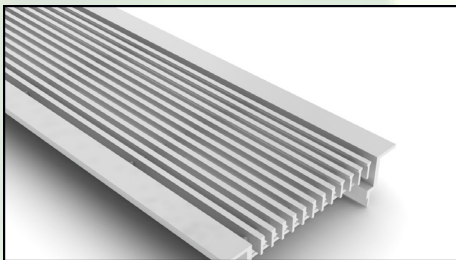


## THE END RESULT

The new Christman Company Headquarters is a shining example of what occurs when companies collaborate toward a single goal. SmithGroup and the Christman team brought a local landmark back to life while creating an open and stunning work environment.

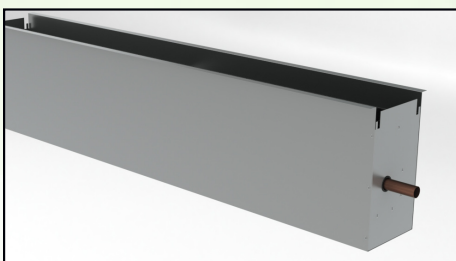


# Titus Products List



CT-TAF-L

CT-TAF-L is a fixed linear bar diffuser for underfloor perimeter return applications.



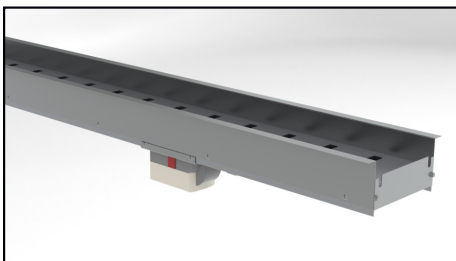
TAF-L-W

The TAF-L-W is a fixed linear bar diffuser plenum for underfloor perimeter heating applications.



TAF-R

The TAF-R is an underfloor diffuser designed to be used in pressurized underfloor systems.



TAF-L-V

The TAF-L-V is a variable linear bar diffuser plenum for underfloor perimeter supply applications.