



AIR DISTRIBUTION
PRODUCTS

INDUSTRY SOLUTIONS

02



ADVANCING THE SCIENCE OF AIR DISTRIBUTION

SECURITY PRODUCTS

Rethink what air management systems can be.
Revise your notion of functionality.
Redefine your comfort zone.™



Comfort, Redefined.

Since 1946, Titus has focused on technologically advanced products that create the highest degree of comfort.

We've consistently led the industry by breaking the barriers of expectation and convention when it comes to technology. We've redefined how technology drives, influences and supports air management. And by being first to market with the most innovative approaches to air distribution, we're proud to say that the marketplace has taken notice, and is counting on us to lead the way into the next decade. A challenge we're more than happy to accommodate.

Titus has raised the bar on design, proving that functional can also be beautiful. And we've redefined what it means to be energy efficient, with a collection of smart technology products that optimize the use of natural resources.

Titus has also redefined what it means to work with an air management products partner. We pride ourselves on listening and responding so that we can not only meet expectations, but also exceed them. Service has been, and will always be, our main focus at Titus. And, it's why so many of our customers keep coming back.

Welcome to your new comfort zone. It starts here.

Overview

Titus offers a complete line of security grilles to accommodate maximum, medium and minimum security applications that require secure HVAC outlets. Titus security grilles are designed to provide superior performance in supply and return applications without compromising security and safety. Security grilles feature heavy-gauge material with all welded construction and integral stitch welded sleeves in lengths up to 18". Options include opposed blade dampers, angle frames, anchor bars, and sleeve barriers.

- Can be used in supply or return applications
- Constructed of heavy-gauge steel or aluminum
- 3/16" sleeve is stitch welded on all seams
- Available with front or rear operated dampers
- Optional angle frame, anchor bars, and sleeve barriers
- Standard finish is British White

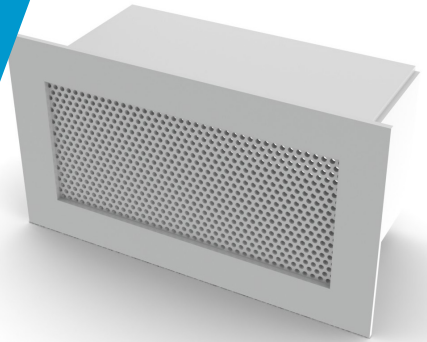


SG-SD

Steel Maximum Security Suicide Deterrent Grille

FEATURES AND BENEFITS:

- Designed to deter suicide attempts
- 3/16" hole openings in the face of the grille designed to supply airflow without compromising security and safety
- Complies with NIC Guidelines for Suicide Prevention and California Title 24
- All welded construction



MODEL:

SG-SD / Steel

FINISHES:

Standard Finish - #26 White

Optional Finish - #04 Mill



metric sizes

maximum security

suicide deterrent

OVERVIEW

Suicide Deterrent

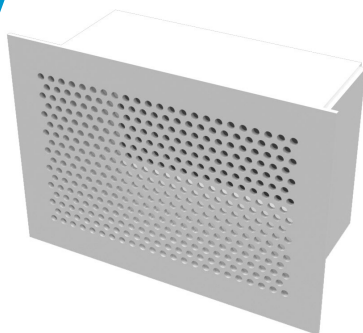
The SG-SD is a maximum security grille designed to allow a greater effective free area and superior airflow without compromising security and safety. This grille complies with the National Institute of Corrections Guidelines for Suicide Prevention and California Title 24.

SG-PR

Steel Maximum Security Grille with Rounded Perforations

FEATURES AND BENEFITS:

- Face Plate is 3/16" steel with 5/16" diameter holes on 7/16" staggered centers and 1" border
- Sleeve is 3/16" steel
- All welded construction



MODEL:

SG-PR / Steel

FINISHES:

Standard Finish - #26 White

Optional Finish - #04 Mill



metric sizes



maximum security



humid areas



prevents corrosion

OVERVIEW

Round Perforated

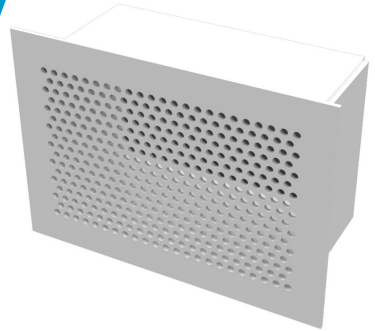
The SG-PR is a maximum security grille designed to allow a greater effective free area and superior airflow without compromising security and safety. This grille is available in stainless steel for corrosive environments.

SG-PRA

Aluminum Maximum Security Grille with Rounded Perforations

FEATURES AND BENEFITS:

- Face Plate 1/8" aluminum with 5/16" diameter holes on 7/16" staggered centers and 1" border
- Sleeve 1/8" aluminum
- All welded construction



MODEL:

SG-PRA / Aluminum

FINISHES:

Standard Finish - #26 White

Optional Finish - #04 Mill



metric sizes



maximum security



prevents corrosion



humid areas

OVERVIEW

Round Perforated

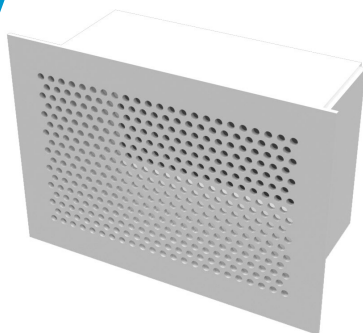
The SG-PRA is a maximum security grille designed to allow a greater effective free area and superior airflow without compromising security and safety. This aluminum grille is used in areas where moisture may cause a problem with standard steel grilles.

SG-PRT

Steel Maximum Security Transfer Grille with Rounded Perforations

FEATURES AND BENEFITS:

- Face Plate 3/16" steel with 5/16" diameter holes on 7/16" staggered centers and 1" border
- Sleeve 3/16" steel
- All welded construction



MODEL:

SG-PRT / Steel

FINISHES:

Standard Finish - #26 White

Optional Finish - #04 Mill



metric sizes



maximum security



humid areas



prevents corrosion

OVERVIEW

Round Perforated

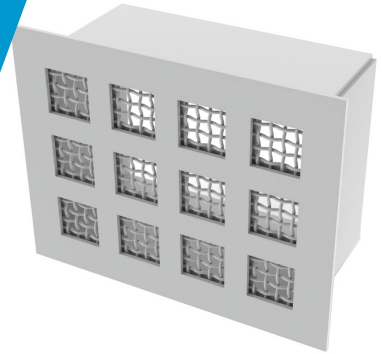
The SG-PRT is a maximum security grille designed to allow a greater effective free area and superior airflow without compromising security and safety. This steel grille is provided with two face plates welded to each end of a sleeve for block walls or for pouring in place in concrete walls.

SG-PS

Steel Maximum Security Grille with Square Perforations

FEATURES AND BENEFITS:

- Face Plate 3/16" steel with 2" square holes, 1" fret bars and 1" border
- Sleeve 3/16" steel
- Mesh Screen 10 gauge x #2 mesh wire located between the face plate and back-up plate
- Backer Plate 3/16" steel
- All welded construction



MODEL:

SG-PS / Steel

FINISHES:

Standard Finish - #26 White

Optional Finish - #04 Mill

OVERVIEW

Square Perforated

The SG-PS is used in areas of maximum security and/or minimum supervision where absolute grille integrity must be maintained. It effectively prevents the concealment of dangerous or potentially lethal objects or other contraband of concern to authorities.



metric sizes



maximum security



monitoring areas



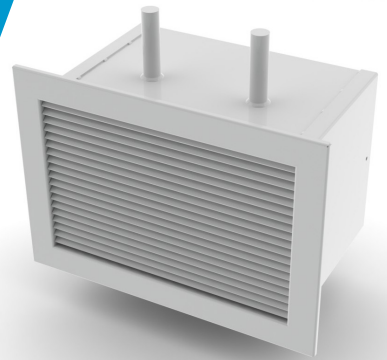
lethal objects

SG-3300RL

Medium Security Fixed Deflection Grille, 38 Degree Deflection with 3/8" Blade Spacing

FEATURES AND BENEFITS:

- Border 16 gauge steel frame with reinforced welded mitred corners
- Sleeve 14 gauge steel
- All welded construction
- Louvers 14 gauge steel louvers on 3/8" centers penetrating through the sleeve and wire welded at both ends
- Each louver is reinforced by interlocking support bars spaced on 6" centers
- Mesh Screen 10 gauge x #2 mesh wire located behind louvers and secured by steel angles welded in position



MODEL:

SG-3300RL / Steel

FINISHES:

Standard Finish - #26 White

Optional Finish - #04 Mill

OVERVIEW

Steel Fixed Bars

Titus medium security grilles are designed to provide excellent performance in areas requiring increased levels of supervision. These products are available in steel construction to meet various application requirements. The SG-3300RL is used in sidewall applications. With heavy-gauge steel louvers welded to a steel sleeve that extends through the wall, the SG-3300RL is an exceptionally strong bar grille.



metric sizes



medium security



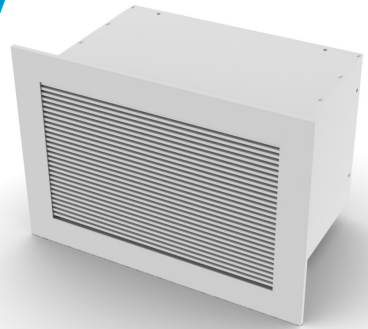
monitoring areas

SG-1500FL

Minimum Security Aluminum Grille with Fixed Bars - 0 degree deflection /
1/2" Blade Spacing / Long Blades

FEATURES AND BENEFITS:

- Louvers 3/16" x 3/4" welded aluminum bars with zero degree deflection
- Sleeve .09" aluminum
- All welded construction
- Ideal for showers and other humid areas



MODEL:

SG-1500FL / Aluminum

FINISHES:

Standard Finish - #26 White

Optional Finish - #04 Mill



metric sizes



minimum security



monitoring areas



humid areas

OVERVIEW

Aluminum Fixed Bars

Titus minimum security grilles are designed where additional security is still necessary and maximum performance is required. The SG-1500FL is an all aluminum security grille ideal for shower areas. The rust proof construction makes this grille an excellent choice for areas exposed to constant humidity.

SG-TDC

Steel Minimum Security Diffuser Steel Louvered Core with Lattice Face

FEATURES AND BENEFITS:

- Face Plate is 12 gauge steel with 13/16" square holes and 3/16" fret bars
- Louvered Diffuser contains Titus model TDC border 1 (surface mount) with 1, 2, 3 or 4 way blow pattern
- Screw holes provided in face plate
- Tamper proof screws provided by others



MODEL:

SG-TDC / Steel

FINISHES:

Standard Finish - #26 White

Optional Finish - #04 Mill



metric sizes



minimum security



monitoring areas

OVERVIEW

Louvered Core – Lattice Face

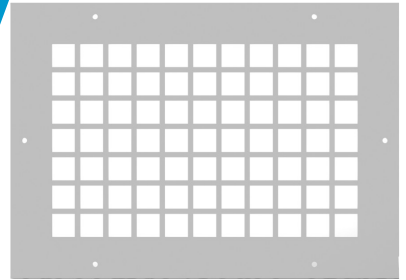
Titus minimum security grilles are designed where additional security is still necessary and maximum performance is required. The SG-TDC is typically used in areas of constant supervision or lobbies or entryways. It is made of the Titus TDC diffuser with a heavy gauge steel lattice grille. The grille can be attached in the field.

SG-LFO

Minimum Security Steel Lattice Face Only

FEATURES AND BENEFITS:

- Face Plate -Steel 12 gauge steel with 13/16" square holes on 1" centers - provides 66% free area
- 3/16" diameter screw holes provided in face plate
- Tamper proof screws provided by others
- Screw Hole Location Screw hole quantities and locations vary by duct size Please consult the factory for screw hole quantity and location



MODEL:

SG-LFO / Steel

FINISHES:

Standard Finish - #26 White

Optional Finish - #04 Mill

OVERVIEW

Lattice Face - 13/16" Square Holes on 1" Centers

The SG-LFO is a minimum security grille used in any area where additional security is required. It is economical alternative return grille for minimum security areas. The SG-LFO is also available in stainless steel for corrosive environment applications.



metric sizes



minimum security



monitoring areas



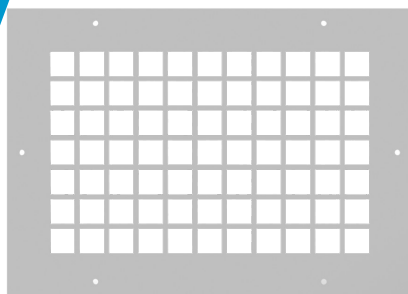
prevents corrosion

SG-LFO-AA

Minimum Security Aluminum Lattice Face Only

FEATURES AND BENEFITS:

- Face Plate - Aluminum 1/8" aluminum with 13/16" square holes on 1" centers - provides 66% free area
- 3/16" diameter screw holes provided in face plate
- Tamper proof screws provided by others
- Screw Hole Location Screw hole quantities and locations vary by duct size Please consult the factory for screw hole quantity and location



MODEL:

SG-LFO-AA / Aluminum

FINISHES:

Standard Finish - #26 White

Optional Finish - #04 Mill

OVERVIEW

Lattice Face - 13/16" Square Holes on 1" Centers

Titus model SG-LFO-AA is an aluminum minimum security grille used in any area where additional security is still necessary and maximum performance is required. It is an economical alternative return grille for these types of applications.



metric sizes



minimum security



monitoring areas



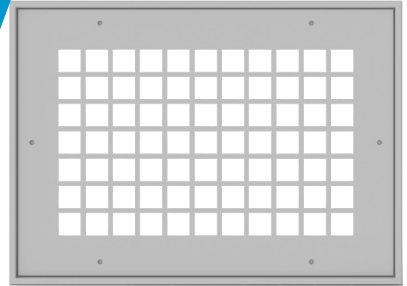
prevents corrosion

SG-LFF

Minimum Security Steel Lattice Face with Sleeve

FEATURES AND BENEFITS:

- Face Plate - Steel 12 gauge steel with 13/16" square holes on 1" centers - provides 66% free area
- 3/16" diameter screw holes provided in face plate
- Tamper proof screws provided by others
- Screw Hole Location Screw hole quantities and locations vary by duct size Please consult the factory for screw hole quantity and location



MODEL:

SG-LFF / Steel

FINISHES:

Standard Finish - #26 White

Optional Finish - #04 Mill

OVERVIEW

Lattice Face with Plaster Frame - 13/16" Square Holes on 1" Centers

The SG-LFF is a minimum security grille used in any area where additional security is required. It is economical alternative return grille for minimum security areas. The SG-LFF is also available in stainless steel for corrosive environment applications.



metric sizes



minimum security



monitoring areas



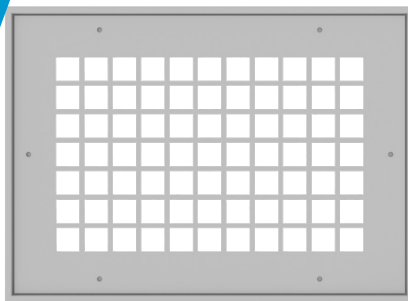
prevents corrosion

SG-LFF-AA

Minimum Security Aluminum Lattice Face with Frame

FEATURES AND BENEFITS:

- Face Plate - Aluminum 1/8" aluminum with 13/16" square holes on 1" centers - provides 66% free area
- 3/16" diameter screw holes provided in face plate
- Tamper proof screws provided by others
- Screw Hole Location Screw hole quantities and locations vary by duct size Please consult the factory for screw hole quantity and location



MODEL:

SG-LFF-AA / Aluminum

FINISHES:

Standard Finish - #26 White

Optional Finish - #04 Mill

OVERVIEW

Lattice Face with Plaster Frame - 13/16" Square Holes on 1" Centers

Titus model SG-LFF-AA is an aluminum minimum security grille used in any area where additional security is still necessary and maximum performance is required. It is an economical alternative return grille for these types of applications.



metric sizes



minimum security



monitoring areas



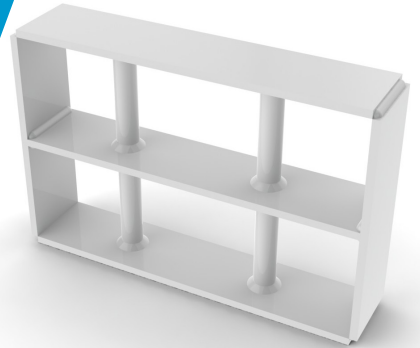
prevents corrosion

SG-BG-FM

Steel Maximum Security Barrier Bars with Frame

FEATURES AND BENEFITS:

- Barrier Grille constructed of 3/4" diameter steel bars and 2 1/2" x 1/4" steel flat bars with maximum opening of 6 inches
- All welded construction
- Frame 2 1/2" x 1/4" steel with welded corners



MODEL:

SG-BG-FM

FINISHES:

Standard Finish - #26 White

Optional Finish - #04 Mill



metric sizes



maximum security



monitoring areas

OVERVIEW

Barrier with Frame

Titus model SG-BG-FM is a framed barrier grille typically used to effectively maintain security in wall openings between secure and non-secure areas. This barrier grille restricts passage through duct openings.

SG-BG-SLV

Steel Maximum Security Barrier Bar Grille with Sleeve

FEATURES AND BENEFITS:

- Sleeve Barrier Grille constructed of 3/4" diameter steel bars with maximum opening of 6 inches
- Sleeve 3/16" steel
- Angle Frames Shipped Loose for Field Welding
- Two frames constructed of 1 1/2" x 1 1/2" x 3/16" steel angle iron welded together for field installation
- Frames are mill finish
- All welded construction



MODEL:

SG-BG-SLV

FINISHES:

Standard Finish - #26 White

Optional Finish - #04 Mill



metric sizes



maximum security

OVERVIEW

Barrier with Sleeve

The Titus SG-BG-SLV is a barrier mounted inside a 3/16" thick sleeve for installation in a wall or other opening as a completing unit. This unit effectively maintains security between secure and non-secure areas. Duct connections can be quickly made at both ends. This makes the SG-BG-SLV an ideal installation in security walls.

Notes





605 Shiloh Rd.
Plano, Texas 75074
(ofc): 972.212.4800
(fax): 972.212.4884
(web): www.titus-hvac.com