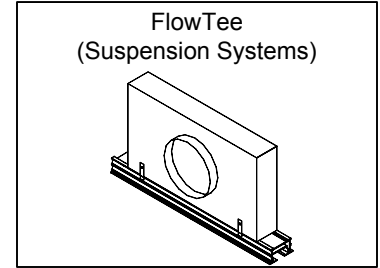
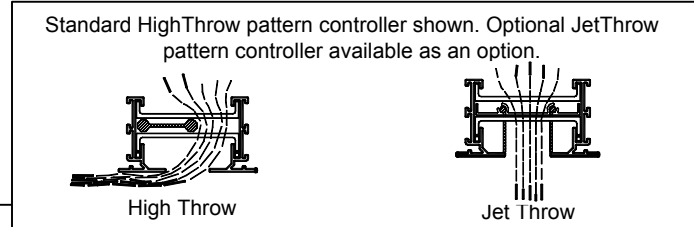


- FT-10** • 1" Slot
- FT-15** • 1½" Slot
- FT-20** • 2" Slot
- FTI-10** • 1" Slot • Insulated
- FTI-15** • 1½" Slot • Insulated
- FTI-20** • 2" Slot • Insulated



FlowBar™ Architectural Ceiling Diffusers
Aluminum • FlowTee (for Suspension Systems only)



Borders 11, 16, 66

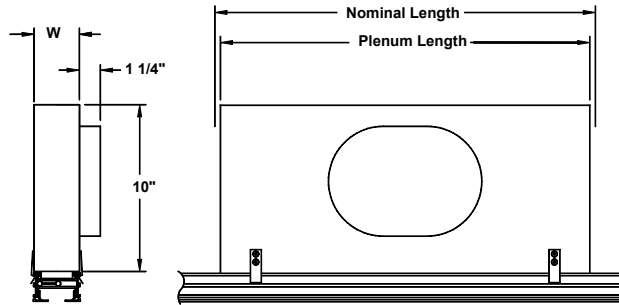
Check if provided.

Inlet

- 6"
- 8"
- 10"
- 12"

Length

- 2 feet
- 4 feet
- 5 feet



Standard Inlet Size	Dimensions	
	Width	Height
6 Oval	6 1/4	5 1/4
8 Oval	9 3/8	5 1/4
10 Oval	12 1/2	5 1/4
12 Oval	14 1/8	7 7/8

Slots

- 1
- 2 CRN
- 2 CRA
- 2 CRB

Pattern Controller

- High Throw
- Jet Throw

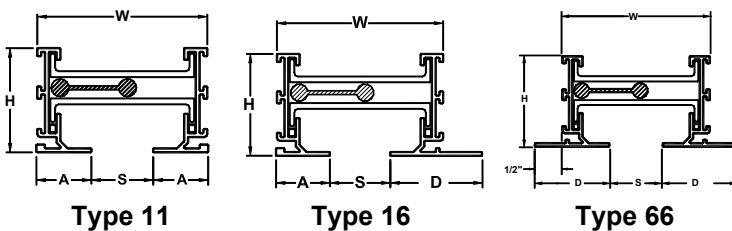
Border

- 11
- 16
- 66

Flow Tee Model	W (width)				Nominal Length	Available Inlets (inches)	Plenum Length (inches) L	Unit Length (inches)
	Slots							
	1	2 CRN	2CRA	2CRB			Oval	Standard
FT, FTB-10	2 3/4	6 1/16	5 3/16		24, 48, 60	6, 8, 10, 12	21 3/4, 45 3/4, 57 3/4	23 5/8, 47 5/8, 59 5/8
FT, FTB-15	3 3/4	8 1/16	7 3/16		24, 48, 60	6, 8, 10, 12	21 3/4, 45 3/4, 57 3/4	23 5/8, 47 5/8, 59 5/8
FT, FTB-20	4 3/4	10 1/16	9 3/16		24, 48, 60	6, 8, 10, 12	21 3/4, 45 3/4, 57 3/4	23 5/8, 47 5/8, 59 5/8
FTI, FTBI-10	2 3/4	6 1/16	5 3/16		24, 48, 60	6, 8, 10, 12	21 3/4, 45 3/4, 57 3/4	23 5/8, 47 5/8, 59 5/8
FTI, FTBI-15	3 3/4	8 1/16	7 3/16		24, 48, 60	6, 8, 10, 12	21 3/4, 45 3/4, 57 3/4	23 5/8, 47 5/8, 59 5/8
FTI, FTBI-20	4 3/4	10 1/16	9 3/16		24, 48, 60	6, 8, 10, 12	21 3/4, 45 3/4, 57 3/4	23 5/8, 47 5/8, 59 5/8

Note: Pressure Vane is standard for 48" and 60" plenums only.

Optional FlowTee Border Types



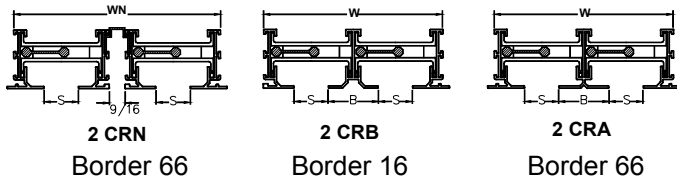
Model	S Slot Width	W Width	A Border Width	D Border Width	H Height
FT, FTI-10	1	2 3/4	7/8	1 3/8	1 11/16
FT, FTI-15	1 1/2	3 3/4	1 1/8	1 5/8	1 11/16
FT, FTI-20	2	4 3/4	1 3/8	1 7/8	1 11/16

Accessories (Optional)

Check if provided.

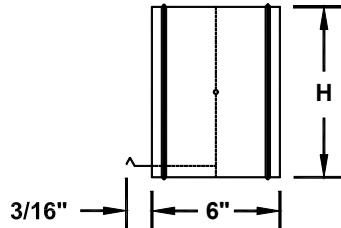
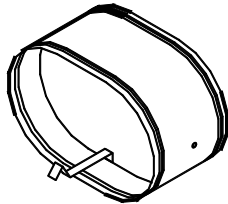
Submittal FT-2.0 05-29-07

Optional Two Slot Units



Model	S Slot Width	B Border Width	W Width	WN Width
FT, FTI-10	1	1 7/16	5 3/16	6 1/16
FT, FTI-15	1 1/2	1 15/16	7 3/16	8 1/16
FT, FTI-20	2	2 7/16	9 3/16	10 1/16

Optional FlowBar Inlet Damper



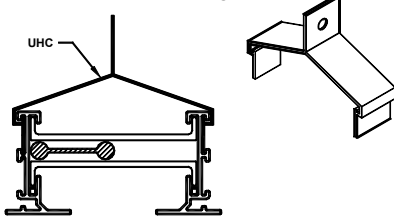
Inlet	H
6"	5 1/4
8"	5 1/4
10"	5 1/4
12"	8

Note: Inlet damper shipped loose.

Hanger & Mounting Clips

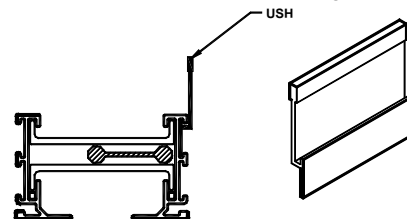
Check if provided.

UHC – Upper Hanger Clip



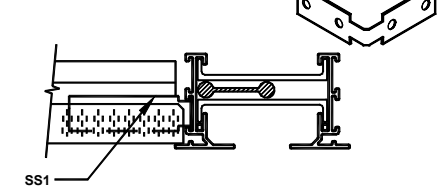
Suspends the FlowBar assembly from the ceiling structure using standard hanger wire.

USH – Upper Support Hanger



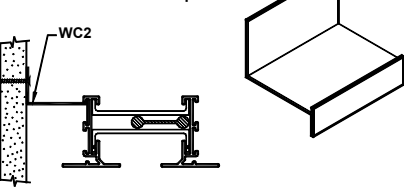
Suspends one side of the FlowBar assembly from the ceiling structure.

SS1 – Spline Support Clip (field formed)



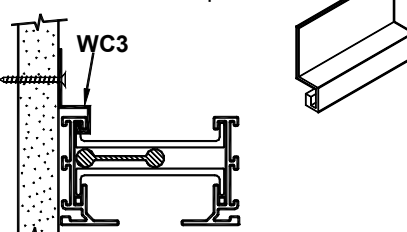
Integrates standard drop "tees" with FlowBar assembly.

WC2 – Wall Clip



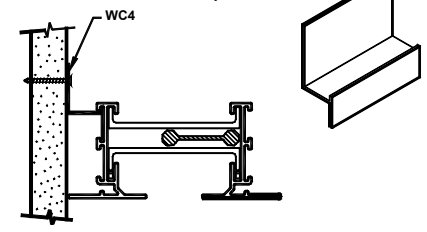
Mounts Border Types 11, 66, or 16 away from a wall when a reveal is required. This reveal can be used as a return air slot.

WC3 – Wall Clip



Mounts Border Types 11 or 16 flush to a wall.

WC4 – Wall Clip



Used for flush mounting Border Types 66 or 16 to a wall.

Notes:

1. Use only for single slot systems. Required for 9/16" tee systems.
2. Used for multiple slot systems. Required for 9/16" 2 slot units.
3. Spline support clip is a connector clip bent at 90°.
4. Used for type 6 rail only.
5. Used for type 1 rail only.

Optional Blank-Offs

• FBBO - 48" Field cut

Standard Finish:

- #26 White border
- Flat Black interior

General Description

- Standard length of diffuser sections are 2, 4 and 5 feet.
- Pattern controllers change direction of the air flow. Maximum length is 24". Pattern controllers are furnished in multiple sections for diffusers longer than 24".
- Diffuser material is extruded aluminum.
- Plenum is steel.



Note: This submittal is meant to demonstrate general dimensions of this product. The drawings on this submittal are not meant to detail every aspect of the product with exactness. Drawings are not to scale. TITUS reserves the right to make changes without written notice.

605 Shiloh Road • Plano, Texas 75074 • 972-212-4800

All rights reserved. No part of this work may be reproduced or transmitted in any form or any means, electronic or mechanical, including photocopying and recording, or by any information storage retrieval system without permission in writing from Air Distribution Technologies.