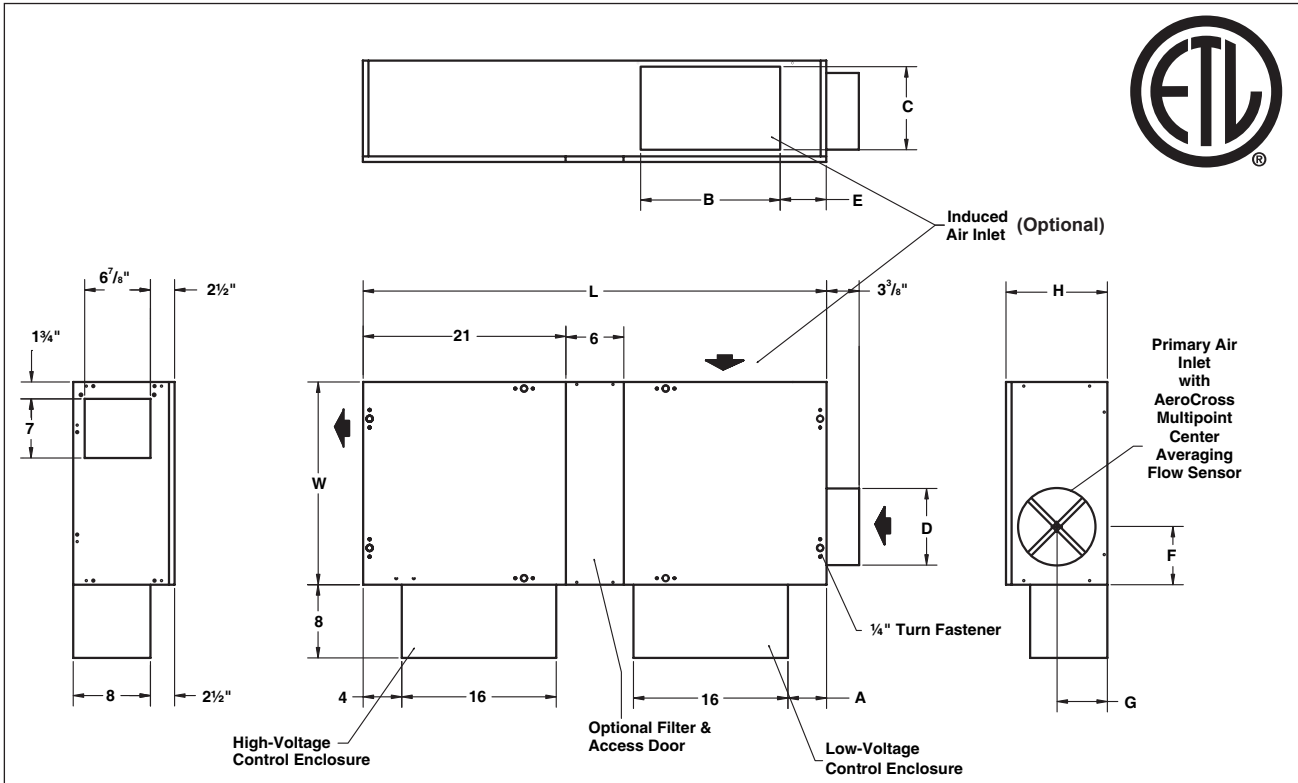


LHK DIMENSIONS



Unit Size	Inlet Size	A	B	C	D	E	F	G	H	L	T	W	Filter Size
3	9" Diameter	5	14	8	8	3½	5	7	10½	48	10	21	18 x 10
4	9" Diameter	5	14	12	8	3	5	7	14	48	13½	21	18 x 14
	9				6								

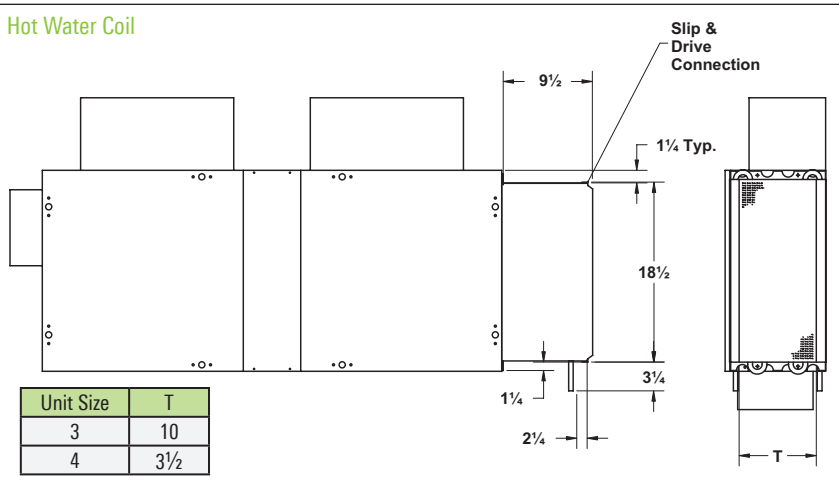
### HOT WATER COIL SECTION

#### STANDARD FEATURES

- ½-inch copper tubes
- Aluminum ripple fins
- Connections: Male solder 5/8-inch for 1-row and 7/8"-2row Left or right hand connections
- Galvanized steel casing
- Slip & drive
- Coil is installed at discharge of unit

#### COIL ROWS

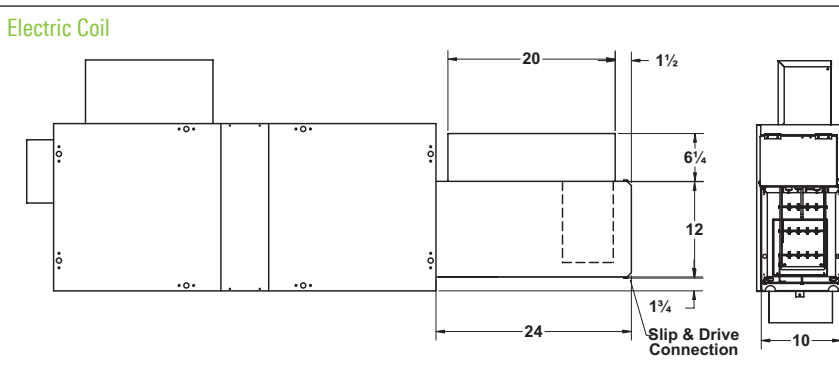
- 1-Row
- 2-Row



### ELECTRIC COIL SECTION

#### STANDARD FEATURES

- Auto reset thermal cutouts (one per element)
- 80/20 Nickel chrome heating elements
- Airflow safety switch
- Line terminal block (277/1Ø, 208/240/3Ø, or 480/3Ø 4 wire)
- Flanged connection
- Control transformer for DDC or Analog electronic controls
- Fan relay for DDC fan terminals
- Magnetic contactor per step on terminals with DDC or analog electronic controls



#### OPTIONS

- Mercury contactor
- Fuse block
- Disconnect switch, door interlock type
- Manual reset cutout
- Dust tight construction
- Optional Lynergy Comfort Controlled SSR Electric Heat

#### SUPPLY VOLTAGE

- 208 V, 1 ph, 60 Hz
- 240 V, 1 ph, 60 Hz
- 277 V, 1 ph, 60 Hz
- 208 V, 3 ph, 60 Hz
- 480 V, 3 ph, 60 Hz (4 wire wye only)

See Electric Heating Coils in Section 0 for more information

### ADDITIONAL ACCESSORIES

#### (OPTIONAL)

- Induced air filter, 1-inch thick, disposable construction type
- Fan disconnect switch (not available on units with optional electric coils)
- Fan unit fusing
- Foil face Liner (½")
- Fibre-free Liner (½")
- EcoShield (½")

#### Electrical Data

Unit Size	Motor HP	Motor Amperage Ratings		
		120/1/60 FLA	208/240/1/60 FLA	277/1/60 FLA
3	1/4	5.8	2.5	1.8
4	1/3	6.4	3.0	2.5

#### ECM Electrical Data

Unit Size	Motor HP	120V	208V	240V	277V
3	1/3	5.0	3.3	2.8	2.6
4	1/3	5.0	3.3	2.8	2.6