



# Boston Children's Museum

Boston, Massachusetts

*clever. creative. comfort.*

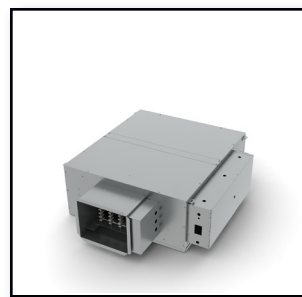
Client - Boston Children's Museum  
 Representative Office - Northeast Air Solutions  
 Architect - Cambridge Seven Associates  
 LEED Certification - LEED Gold Certified



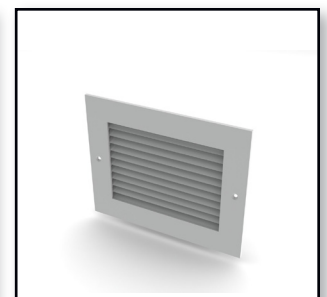
## ABOUT THE PROJECT

The recent addition and renovation to the Boston Children's Museum utilized many green design elements that garnered the facility the LEED Gold Certification for NC. Designed by Cambridge Seven Associates, the architectural firm created a building that serves not only as a museum, but as a classroom for the environment for the young and old to explore together.

The energy harvesting potential of the building is amazing. The architects at Cambridge Seven were committed to protecting the adjacent Fort Point Channel. This was done by reducing the storm water discharge. Storm and roof water are collected and stored on site in a cistern, thus providing a gray-water source. The building also features living green roof systems that enhance and improve insulation, reduce heat, and hold rainwater. The architects had to reconfigure the interior of the old warehouse building, revamp energy and lighting-control systems, consolidate the museum's exhibit space and offices to the first three floors, and add a theater to the structure.



DTFS



CT-700



300/350R



DESX

# Boston Children's Museum

Boston, Massachusetts



## THE TITUS SOLUTION

Titus has many Green Solutions that work well in an open-ceiling application and assist in achieving LEED certification. The products selected for this project were the DTFS fan powered terminal unit, the CT-700 and 300/350R grilles and the DESV single duct terminal unit.

The DTFS is a digitally controlled fan powered terminal unit that has an energy efficient fan motor mounted with vibration isolators. It maintains the variable air volume (VAV) energy savings at the central fan. The DTFS is a quiet unit that provides pressure independent airflow control. It is available from 150 - 3800 cfm flow range. The CT-700 and 300/350R grilles utilized are excellent units for air distribution. Both grilles have blades parallel to the long dimension and work well in open ceiling environments.

The DESV is a single duct terminal unit. Its primary function is to regulate airflow to a zone, in response to zone temperature requirements. The digitally controlled unit is unique as it incorporates many design features that increase performance, decrease service and installation costs, and offers increased value, over and above its basic function.



# Boston Children's Museum

Boston, Massachusetts


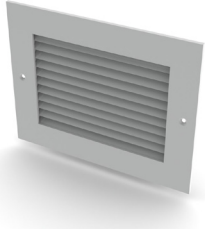




## THE END RESULT

The primary mission for the Boston Children's Museum is to exist to help children and families enjoy, understand and become active citizens of the world in which they live. The new addition further enhances this by placing emphasis on the environmental, health, and human aspects while providing a safe place to learn and monitor the performance of a Green Building. The museum is fully committed to having children grow up as successful learners who respect others and the natural world. They encourage imagination, curiosity, investigation, innovation, and play.



Titus Products List

			
<b>DTFS</b>	<b>CT-700</b>	<b>DESV</b>	<b>300/350R</b>
The DTFS is a series fan powered terminal unit that maintains the VAV energy savings at the central fan.	The CT-700 is an aluminum door return grille with sight-proof blades parallel to long dimension.	The DESV is a single duct terminal unit that regulates airflow to a zone.	300/350R grilles are the standard for the industry and work well in many applications.

Address - 605 Shiloh Rd Plano Texas 75074

Office - 972.212.4800

Fax - 972.212.4877

E-mail - [titus@titus-hvac.com](mailto:titus@titus-hvac.com)

Websites - [www.titus-hvac.com](http://www.titus-hvac.com) | [www.titus-energysolutions.com](http://www.titus-energysolutions.com)

© Copyright Titus 2011 | All rights reserved

