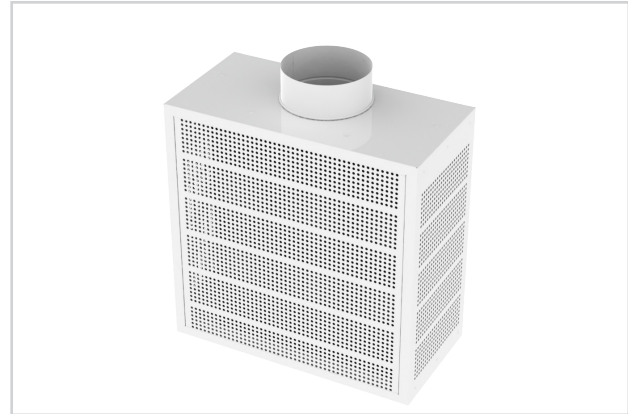


## DVR3

- Rectangular displacement diffuser with 3-way air discharge pattern for wall or surface mount applications
- Supplies a large volume of air at low velocity to the occupied zone
- Includes integral variable air pattern controllers for easy adjustment of the airflow spread pattern
- Includes air volume measurement outlet to facilitate balancing. K-factor is marked on outlet.
- Material is galvanized steel and aluminum
- Standard finish is #26 white (powdercoat)
- Optional duct cover and mounting base available as accessories



DVR3



wood grains energy solutions

### MODEL:

DVR3

### FINISHES:

Standard Finish - #26 White

Optional Finish - Wood grains (See Wood grains Brochure for Finishes)

### OVERVIEW

The DVR3 is a rectangular displacement diffuser with a three-way discharge pattern designed for surface mount applications. It supplies a large volume of air at low velocities into the occupied zone. This model can contribute toward achieving LEED EA Credit 1: Optimize Energy Performance; IEQc2: Increased Ventilation; and IEQc7.1: Thermal Comfort - Design.



See website for Specifications



DVR3 unit installed along the wall next to a bookshelf with duct cover and mounting base