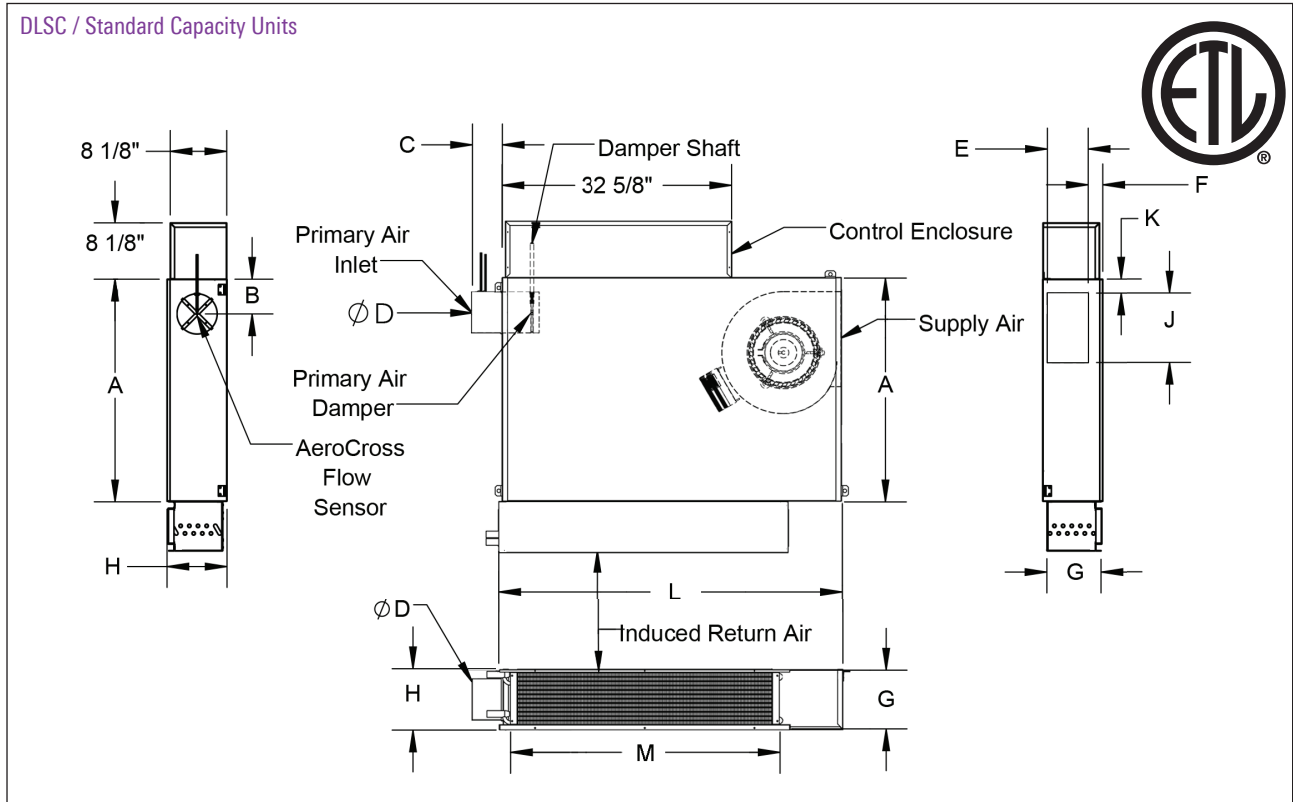


DLSC DIMENSIONS

DLSC / Standard Capacity Units



Unit Size	A	E	F	G	H	J	K	L	M
1	32	5 ⁷ / ₈	2 ¹ / ₈	7 ³ / ₄	8 ⁵ / ₈	10	2	48 ¹ / ₈	38 ³ / ₄
2			3	8 ¹ / ₂	9 ¹ / ₂				
3	26	6 ⁷ / ₈	2 ¹ / ₈	9 ³ / ₄	11	9	2 ¹ / ₄	40 ¹ / ₈	44 ³ / ₄
5	35	10 ⁷ / ₈	3 ¹ / ₄	13 ¹ / ₂	17	10	6 ¹ / ₄	46 ¹ / ₈	

Inlet Size	B	C	D
4	5	6 ⁷ / ₈	3 ⁷ / ₈
5			4 ⁷ / ₈
6	6	4 ³ / ₄	5 ⁷ / ₈
8			7 ⁷ / ₈
10			9 ⁷ / ₈
12	8	6 ³ / ₄	11 ⁷ / ₈
14	10		13 ⁷ / ₈

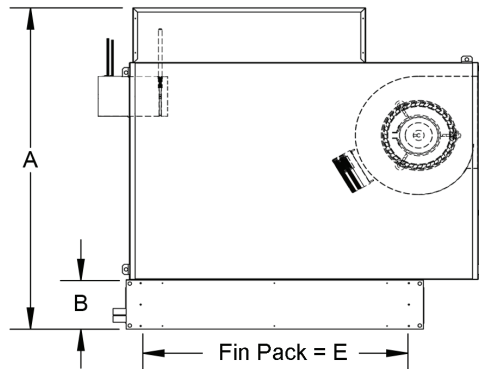
ECM ELECTRICAL DATA

Unit Size	Motor HP	Motor Full Load Amps			
		120V	208V	240V	277V
1	1/3	5.0	3.3	2.8	2.6
2	1/3	5.0	3.3	2.8	2.6
3	1/2	7.7	5.0	4.3	4.1
5	3/4	9.6	7.9	6.8	5.5

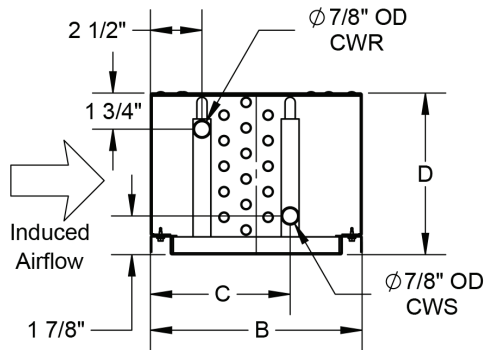
DLSC DIMENSIONS

DLSC / Standard Capacity Sensible Coil

Sensible Cooling Coil Dimensions

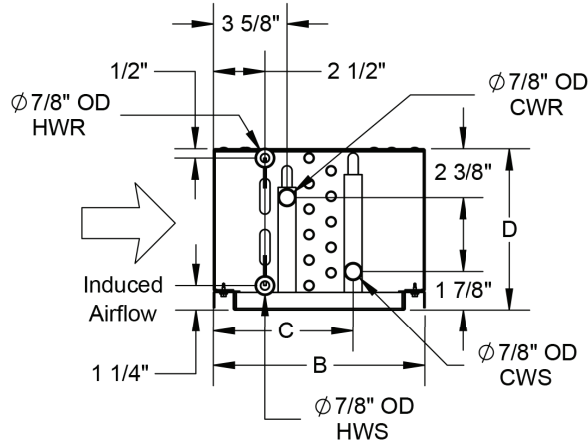


2-Pipe Coil Details



Size 1, 5 Row Cooling Shown

4-Pipe Coil Details

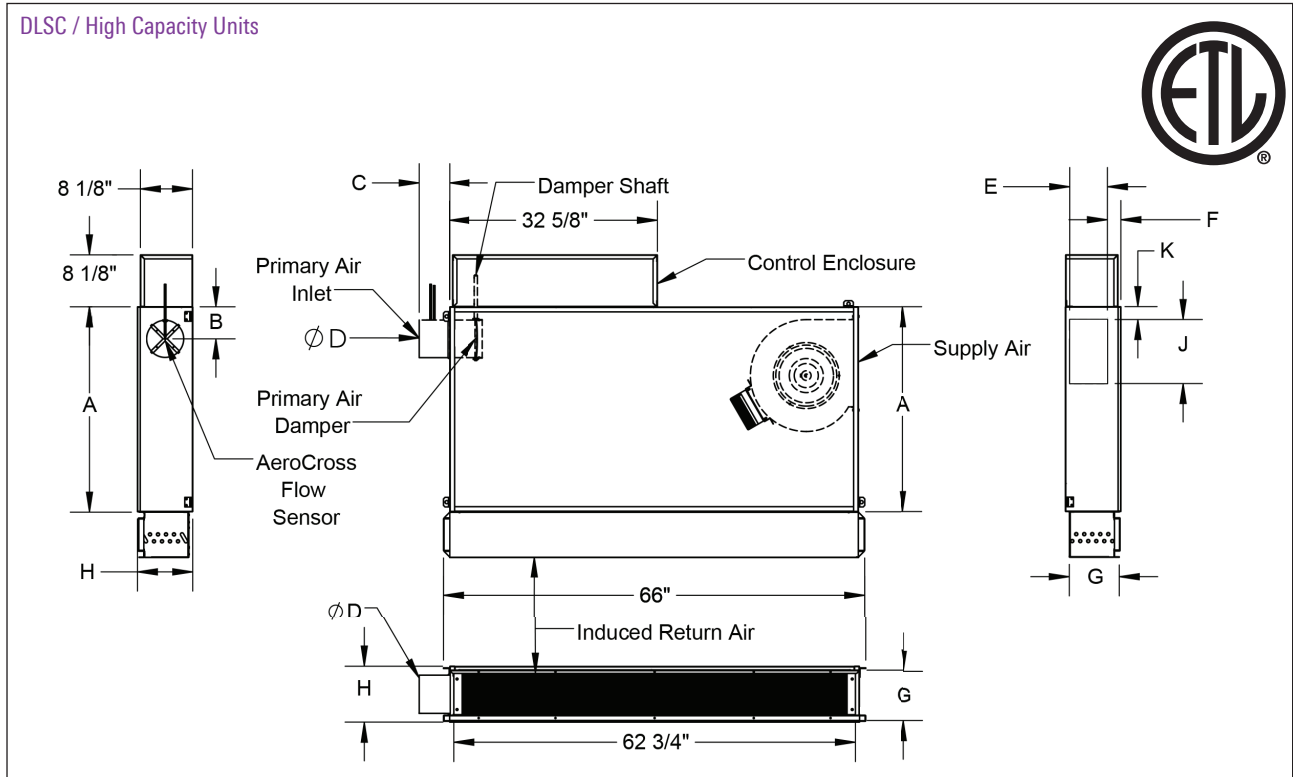


Size 1, 4 Row Cooling, 1 Row Heating Shown

Unit Size	Coil Rows	A	B	C	D	E
1	2	47 ¹ / ₄ "	7 ¹ / ₈ "	3 ¹ / ₄ "	7 ³ / ₄ "	36"
	3	48 ¹ / ₄ "	8 ¹ / ₄ "	4 ³ / ₄ "		
	4	49 ¹ / ₂ "	9 ¹ / ₄ "	12 ¹ / ₂ "		
	5	50 ¹ / ₂ "	10 ³ / ₈ "	6 ⁷ / ₈ "		
	6	51 ⁵ / ₈ "	11 ¹ / ₂ "	7 ⁷ / ₈ "		
	7	52 ¹ / ₂ "	12 ¹ / ₂ "	9 ¹ / ₈ "		
	8	53 ⁵ / ₈ "	13 ⁵ / ₈ "	9 ⁷ / ₈ "		
	8	53 ³ / ₈ "	13 ⁵ / ₈ "	9 ⁷ / ₈ "		
2	2	47 ¹ / ₄ "	7 ¹ / ₈ "	3 ¹ / ₄ "	8 ¹ / ₂ "	36"
	3	48 ³ / ₈ "	8 ¹ / ₄ "	4 ³ / ₄ "		
	4	49 ³ / ₈ "	9 ¹ / ₄ "	5 ¹ / ₂ "		
	5	50 ¹ / ₂ "	10 ³ / ₈ "	6 ⁷ / ₈ "		
	6	51 ⁵ / ₈ "	11 ¹ / ₂ "	7 ⁷ / ₈ "		
	7	52 ⁵ / ₈ "	12 ¹ / ₂ "	9 ¹ / ₈ "		
	8	53 ³ / ₄ "	13 ⁵ / ₈ "	9 ⁷ / ₈ "		
	8	53 ³ / ₄ "	13 ⁵ / ₈ "	9 ⁷ / ₈ "		
3	2	41 ¹ / ₄ "	7 ¹ / ₈ "	3 ¹ / ₄ "	9 ³ / ₄ "	36"
	3	42 ³ / ₈ "	8 ¹ / ₄ "	4 ³ / ₄ "		
	4	43 ³ / ₈ "	9 ¹ / ₄ "	5 ¹ / ₂ "		
	5	44 ¹ / ₂ "	10 ³ / ₈ "	6 ⁷ / ₈ "		
	6	45 ⁵ / ₈ "	11 ¹ / ₂ "	7 ⁷ / ₈ "		
	7	46 ⁵ / ₈ "	12 ¹ / ₂ "	9 ¹ / ₈ "		
	8	47 ³ / ₄ "	13 ⁵ / ₈ "	9 ⁷ / ₈ "		
	8	47 ³ / ₄ "	13 ⁵ / ₈ "	9 ⁷ / ₈ "		
5	2	51 ¹ / ₈ "	7 ¹ / ₈ "	3 ¹ / ₄ "	13 ¹ / ₂ "	36"
	3	52 ¹ / ₄ "	8 ¹ / ₄ "	4 ³ / ₄ "		
	4	53 ¹ / ₄ "	9 ¹ / ₄ "	5 ¹ / ₂ "		
	5	54 ³ / ₈ "	10 ³ / ₈ "	6 ⁷ / ₈ "		
	6	55 ¹ / ₂ "	11 ¹ / ₂ "	7 ⁷ / ₈ "		
	7	56 ¹ / ₂ "	12 ¹ / ₂ "	9 ¹ / ₈ "		
	8	57 ⁵ / ₈ "	13 ⁵ / ₈ "	9 ⁷ / ₈ "		
	8	57 ⁵ / ₈ "	13 ⁵ / ₈ "	9 ⁷ / ₈ "		

DLSC DIMENSIONS

DLSC / High Capacity Units



Unit Size	A	E	F	G	H	J	K
A	32	5 7/8	2 1/8	7 3/4	8 5/8	10	2
B			3	8 1/2	9 1/2		
C	26	6 7/8	2 1/8	9 3/4	11	9	2 1/4
E	35	10 7/8	3 1/4	13 1/2	17	10	6 1/4

Inlet Size	B	C	D
4	5	6 7/8	3 7/8
5			4 7/8
6			5 7/8
8	6	4 3/4	7 7/8
10	7		9 7/8
12	8	6 3/4	11 7/8
14	10		13 7/8

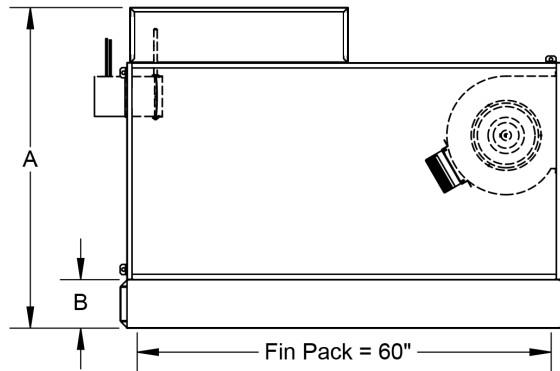
ECM ELECTRICAL DATA

Unit Size	Motor HP	120V	208V	240V	277V
A	1/3	5.0	3.3	2.8	2.6
B	1/3	5.0	3.3	2.8	2.6
C	1/2	7.7	5.0	4.3	4.1
E	3/4	9.6	7.9	6.8	5.5

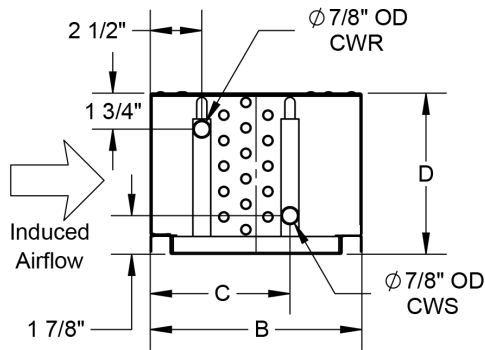
DLSC DIMENSIONS

DLSC / High Capacity Sensible Coil

Sensible Cooling Coil Dimensions

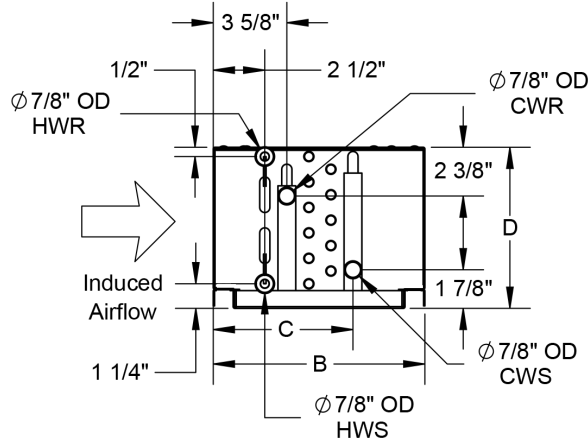


2-Pipe Coil Details



Size A, 5 Row Cooling Shown

4-Pipe Coil Details

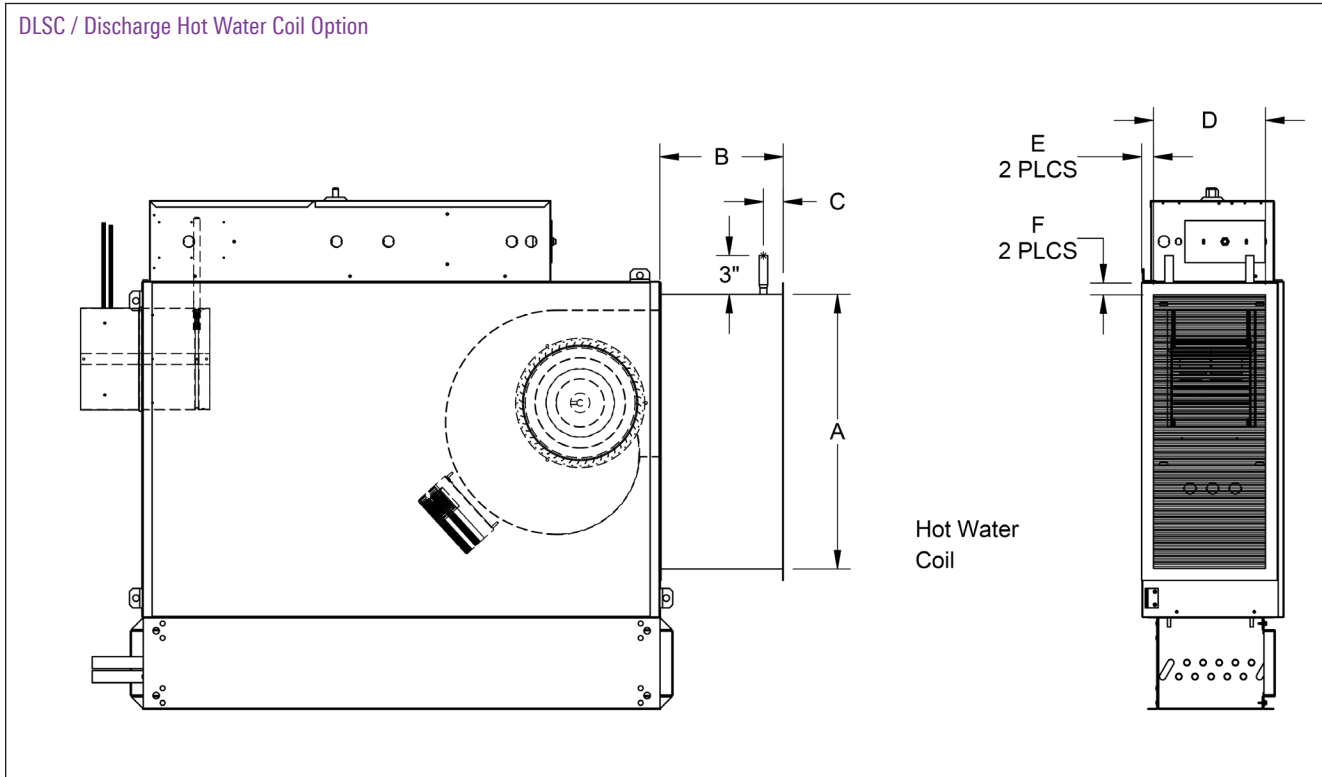


Size A, 4 Row Cooling, 1 Row Heating Shown

Unit Size	Coil Rows	A	B	C	D
A	2	47 ¹ / ₄	7 ¹ / ₈	3 ¹ / ₄	7 ³ / ₄
	3	48 ¹ / ₄	8 ¹ / ₄	4 ³ / ₄	
	4	49 ¹ / ₂	9 ¹ / ₄	12 ¹ / ₂	
	5	50 ¹ / ₂	10 ³ / ₈	6 ⁷ / ₈	
	6	51 ⁵ / ₈	11 ¹ / ₂	7 ⁷ / ₈	
	7	52 ¹ / ₂	12 ¹ / ₂	9 ¹ / ₈	
	8	53 ⁵ / ₈	13 ⁵ / ₈	9 ⁷ / ₈	
	B	2	47 ¹ / ₄	7 ¹ / ₈	
3		48 ³ / ₈	8 ¹ / ₄	4 ³ / ₄	
4		49 ³ / ₈	9 ¹ / ₄	5 ¹ / ₂	
5		50 ¹ / ₂	10 ³ / ₈	6 ⁷ / ₈	
6		51 ⁵ / ₈	11 ¹ / ₂	7 ⁷ / ₈	
7		52 ⁵ / ₈	12 ¹ / ₂	9 ¹ / ₈	
8		53 ³ / ₄	13 ⁵ / ₈	9 ⁷ / ₈	
C		2	41 ¹ / ₄	7 ¹ / ₈	3 ¹ / ₄
	3	42 ³ / ₈	8 ¹ / ₄	4 ³ / ₄	
	4	43 ³ / ₈	9 ¹ / ₄	5 ¹ / ₂	
	5	44 ¹ / ₂	10 ³ / ₈	6 ⁷ / ₈	
	6	45 ⁵ / ₈	11 ¹ / ₂	7 ⁷ / ₈	
	7	46 ⁵ / ₈	12 ¹ / ₂	9 ¹ / ₈	
	8	47 ³ / ₄	13 ⁵ / ₈	9 ⁷ / ₈	
	E	2	51 ¹ / ₈	7 ¹ / ₈	3 ¹ / ₄
3		52 ¹ / ₄	8 ¹ / ₄	4 ³ / ₄	
4		53 ¹ / ₄	9 ¹ / ₄	5 ¹ / ₂	
5		54 ³ / ₈	10 ³ / ₈	6 ⁷ / ₈	
6		55 ¹ / ₂	11 ¹ / ₂	7 ⁷ / ₈	
7		56 ¹ / ₂	12 ¹ / ₂	9 ¹ / ₈	
8		57 ⁵ / ₈	13 ⁵ / ₈	9 ⁷ / ₈	

DLSC DIMENSIONS

DLSC / Discharge Hot Water Coil Option



DISCHARGE HOT WATER COIL SECTION

STANDARD FEATURES

- 1/2" Copper tubes
- Aluminum ripple fins, 10 per inch
- Connections: Male solder, 5/8"
- Galvanized steel casing
- Flanged duct connection
- Flanged connection???

OPTIONS

- Left hand or right hand connections
- 1-Row or 2-Row coils available

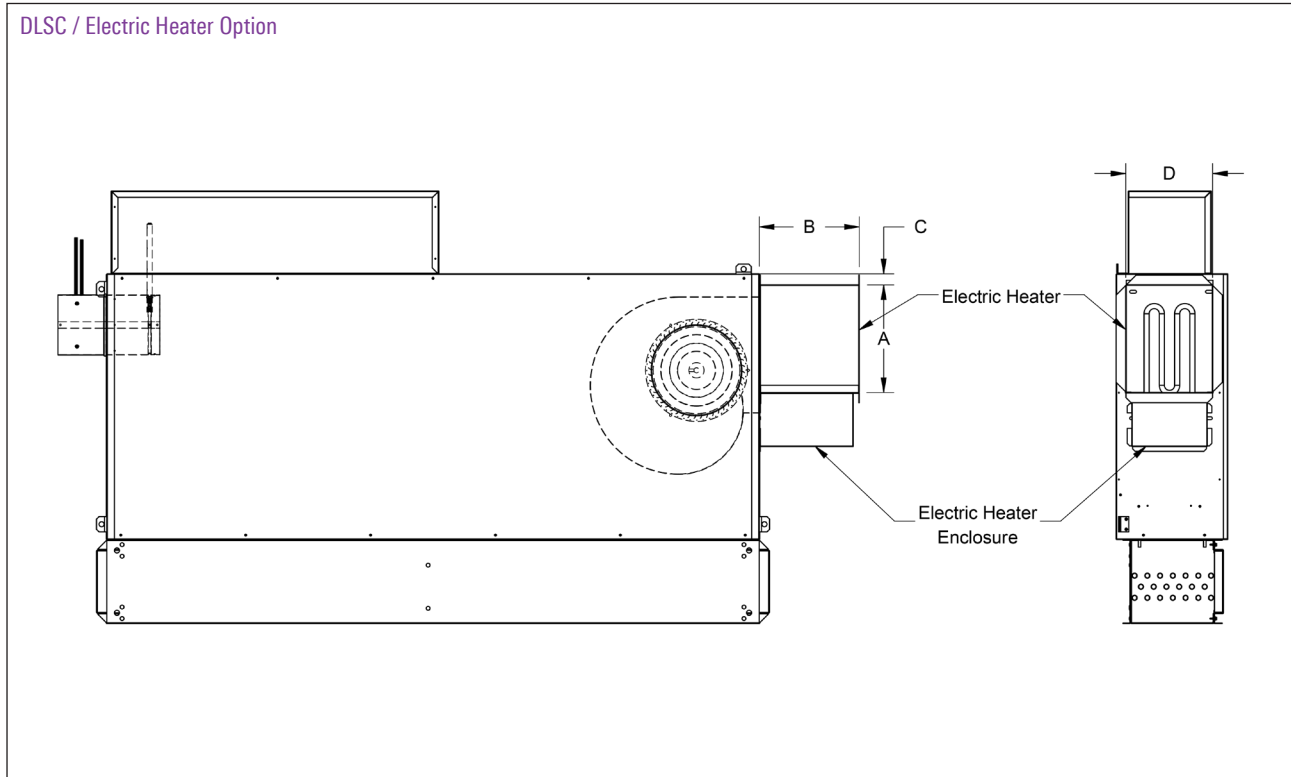
Unit Size	Coil Rows	A	B	C	D	E	F
1 & A	1 Row	20½	9½	2 ⁵ / ₈	6 ⁵ / ₈	½	¾
	2 Row						
2 & B	1 Row	20½	9½	2 ⁵ / ₈	6 ⁵ / ₈	½	¾
	2 Row						
3 & C	1 Row	21 ¹ / ₈	9½	1½	8 ⁵ / ₈	7/8	1
	2 Row						
5 & E	1 Row	22	8	1 ⁹ / ₁₆	15	½	1
	2 Row						

Notes:

Image depicts top and bottom coil flanges formed outward. For sizes 1, 2, A & B coil top and bottom flanges are formed inward.

DLSC DIMENSIONS

DLSC / Electric Heater Option



ELECTRIC COIL SECTION

STANDARD FEATURES

- Safety auto reset thermal cutouts (one per heater element)
- 80/20 Nickel chrome heating elements
- Magnetic contactors for stepped heating
- Airflow safety switch
- Terminal block
- Flanged connection

SUPPLY VOLTAGE

- 208V, 1 ph, 60 Hz.
- 240V, 1 ph, 60 Hz.
- 277V, 1 ph, 60 Hz.
- 208V, 3 ph, 60 Hz.
- 480V, 3ph, 60 Hz. (4 wire WYE only)

Unit Size	A	B	C	D
1 & A	10½	10½	1⅛	7¾
2 & B	10½	10 ³ / ₈	2⅛	7¾
3 & C	10½	9 ⁵ / ₈	1⅛	8½
5 & E	14½	9¾	6¼	13

Notes:

Duct connection for sizes 1, 2, A & B are slip and drive. Duct connection for sizes 3, 5, C & E are 1" flanged connections.

OPTIONS

- Fuse Block
- Door Interlock Disconnect Switch
- Secondary Manual reset thermal cutout
- Dust-tight construction
- Lynergy Comfort Controlled solid state relay electric heat:
 - Accepts the following control signals
 - PWM heat
 - 2 Stage heat
 - 0-10V / 0-20mA
 - 2-10V / 4-20mA
 - Incremental T-stat
 - Binary
 - 3 point floating
 - Discharge temperature limit sensor/control