

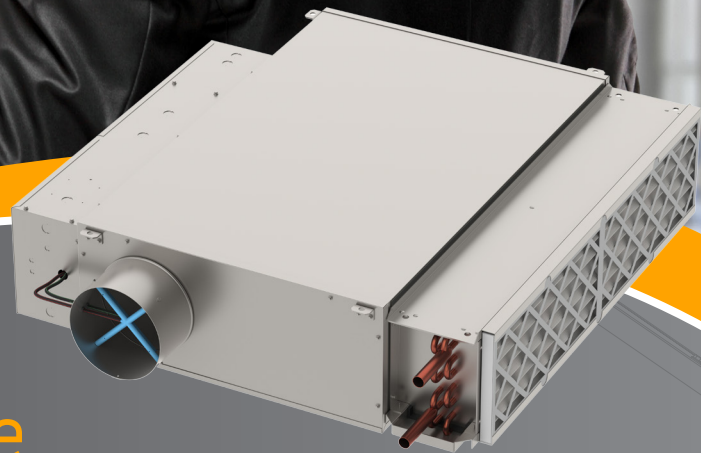


Maximize Compliance and Efficiency. Minimize Space

The DLSC is a Series Flow Fan Powered Terminal Unit that features a sensible cooling coil at the induction port. It has been designed to work as part of a dedicated outdoor air system (DOAS). The DLSC decouples the sensible load from the ventilation system, allowing engineers to optimize the outside air system.

FEATURES AND BENEFITS

- Sizes: 1, 2, 3, 4, 5, A, B, C, and E / Lettered sizes are high induction capacity version of the standard numbered sizes
- Induced air water coils: 1 through 8 row, single row heating optional
- Discharge heating coils: Electric and water options
- Outside air inlet: 4" to 14" round, 16" x 8" rectangular



DLSC