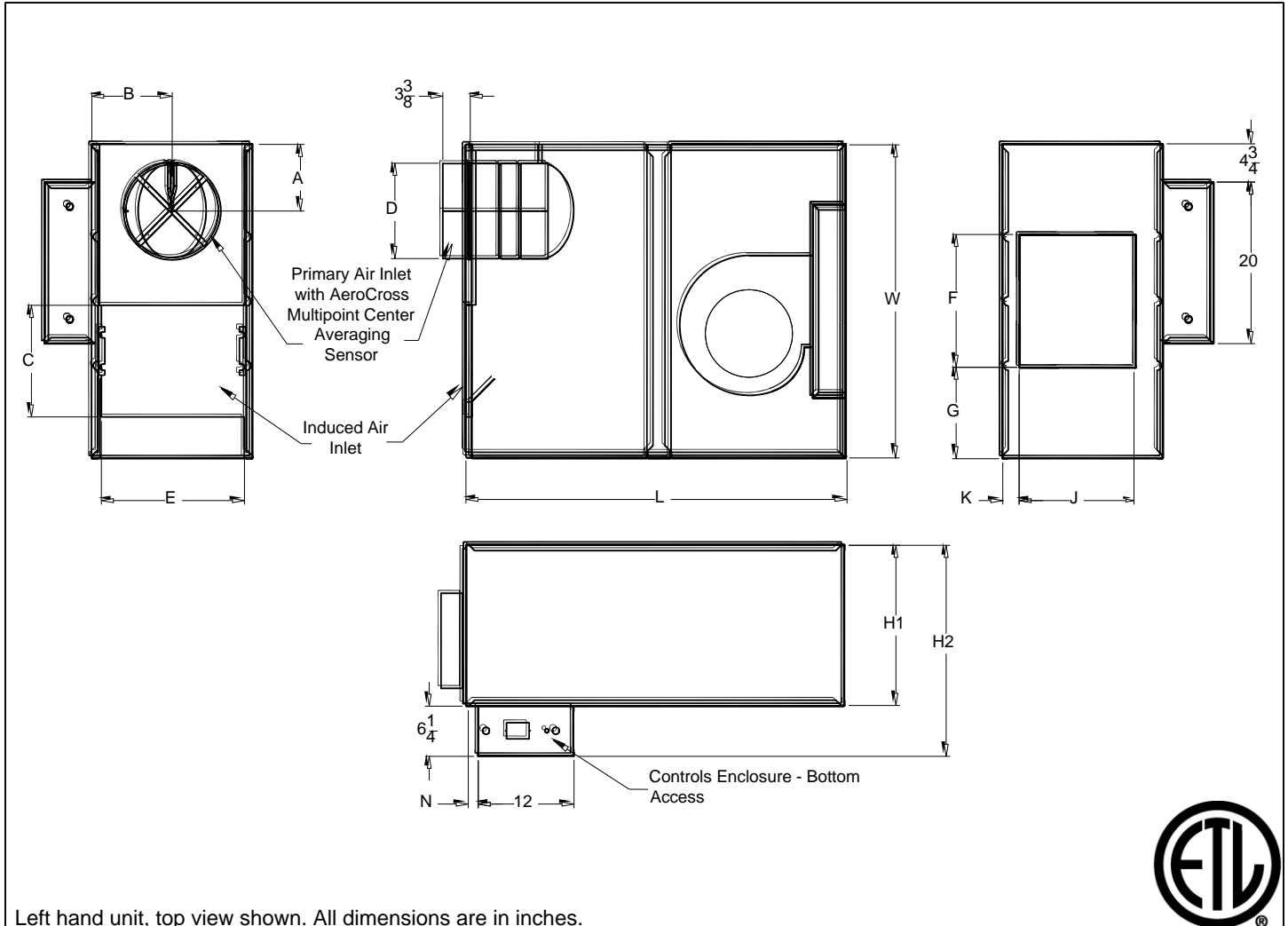


DTFS with ECM Motor and Bottom Control Panel

Fan Powered Terminal, Series Flow

Direct Digital Control, Pressure Independent

(Unit sizes A & G each have separate submittals due to construction differences.)



Left hand unit, top view shown. All dimensions are in inches.



Unit Size	Inlet Size	A	B	C	D	E	F	G	H1	H2	J	K	L	N	W	Filter Size
B	6	6	8	12 1/2	5 7/8	14 1/4	14 1/8	11 1/2	16	22 1/4	11 1/8	2 1/4	43	1/2	37	16 x 14
	8	7 7/8			1/2											
	10	9 7/8			1 1/2											
	12	11 7/8			1 1/2											
C	6	6	8	12 1/2	5 7/8	14 1/4	14 1/8	11 1/2	16	22 1/4	11 1/8	2 1/4	43	1/2	37	16 x 14
	8	7 7/8			1/2											
	10	9 7/8			1 1/2											
	12	11 7/8			1 1/2											
D	10	7	10	12	9 7/8	18 1/4	16 1/2	11 1/4	20	26	14 5/8	2	47 1/2	1 1/2	39	14 x 18
	12	8			1 1/2											
	14	10			2 1/2											
	16	11			2 1/2											
E	12	8	10	12	11 7/8	18 1/4	16 1/2	11 1/4	20	26	14 5/8	2	47 1/2	1 1/2	39	14 x 18
	14	10			2 1/2											
	16	11			2 1/2											

ECM Motor Amperage Ratings

Unit Size	Motor hp	120V/1/60 FLA	208V/1/60 FLA	277V/1/60 FLA
B	1/3	5.0	3.3	2.6
C	1/3	5.0	3.3	2.6
D	1/2	7.7	5.0	4.1
E	3/4	9.6	7.9	5.5

FLA = Full Load Amperage, rated per the motor nameplate

All fan motors are single phase, same voltage as electric coil (when supplied), with exception that 277V motors are used with 480V, 3 phase coils (4 wire wye).

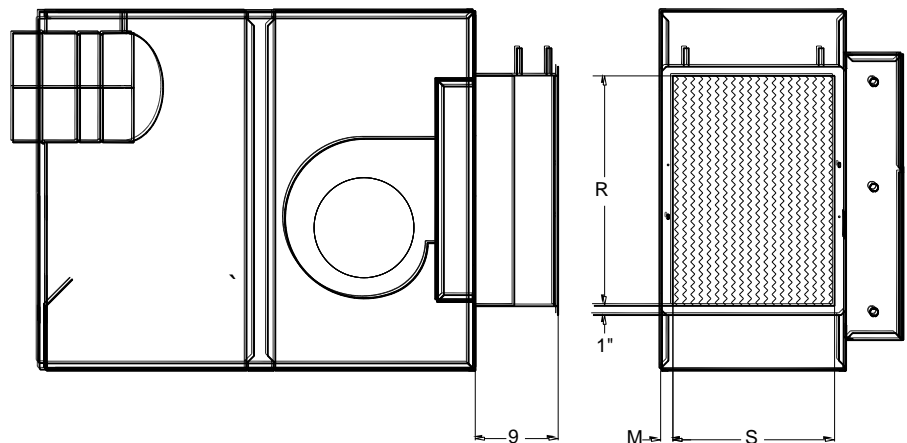
Accessories (Optional)

Check if provided.

- | | |
|---|---|
| <input type="checkbox"/> Induced Air Filter, 1" thick, disposable construction type. | <input type="checkbox"/> 1" Fiberglass Liner |
| <input type="checkbox"/> Fan disconnect switch (not available on units with optional electric coils.) | <input type="checkbox"/> 1/2" EcoShield Liner |
| <input type="checkbox"/> Fan unit fusing | <input type="checkbox"/> 1/2" EcoShield Liner (Foil Face) |
| <input type="checkbox"/> Cam Latch for Access Door | <input type="checkbox"/> 1" EcoShield Liner |
| <input type="checkbox"/> Hanger Brackets | <input type="checkbox"/> 1" EcoShield Liner (Foil Face) |
| <input type="checkbox"/> _____ | <input type="checkbox"/> Fibre Free Liner |
| | <input type="checkbox"/> SteriLoc Liner |

Accessories (Optional) Unit sizes A & G each have separate submittals due to construction differences.

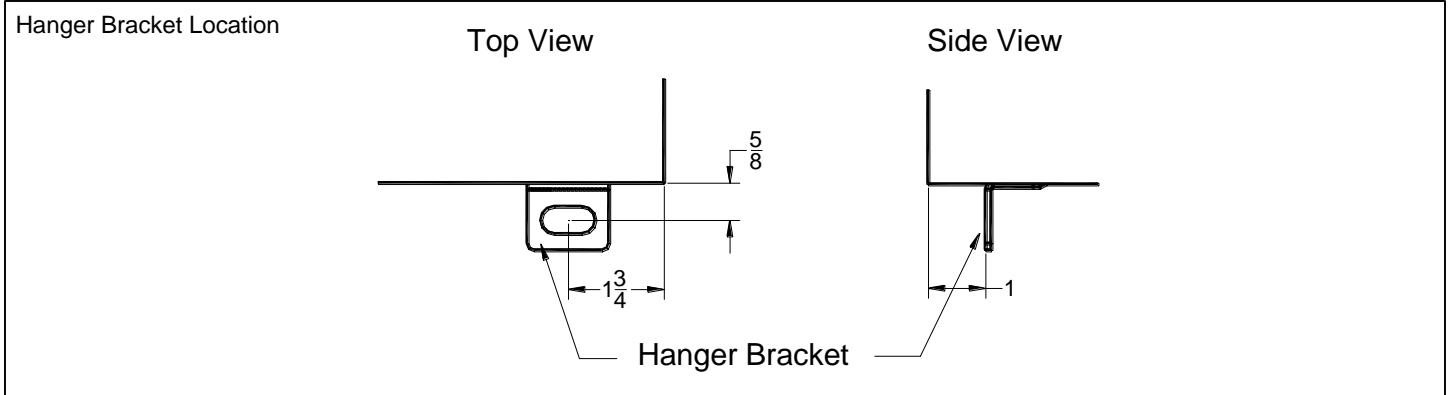
- Hot Water Coil Section
- 1/2" copper tubes
 - Aluminum ripple fins, 10 per inch
 - Connections: Male solder, 5/8" for both 1-row and 2-row. Left hand or right hand connections.
 - Galvanized steel casing
 - Flanged duct connection.
 - Coil is installed on discharge of unit.
- 1 Row
- 2 Row



Unit Size	M (1 row)	M (2 row)	R	S
B,C	1	1	20 1/2	12 1/2
D,E	1	1 1/4	25	17 1/2

R and S are inside dimensions.

Accessories (Optional) Unit sizes A & G each have separate submittals due to construction differences.



General Description

- Heavy steel casing, with leak resistant construction.
- Dual density insulation, coated to prevent air erosion, meet requirements of NFPA 90A and UL 181.
- Ultra high efficiency, brushless DC ECM motor with a unique microprocessor based motor controller.
- Manual PWM controller allows simple screwdriver adjustment of fan speed.
- Optional remote PWM controller allows for a 0-10 V signal from the DDC controller to adjust the fan speed.
- Efficiencies of up to 70% across the entire operating range.
- Provides a large turndown ratio
- Constant volume regardless of changes in downstream static pressure allows for factory setting of cfm.
- Top and bottom access panels can be removed for service.
- Multipoint, center averaging velocity sensor.
- Primary air flow balancing connections.
- Pressure independent primary flow control.
- Single point electrical connections.
- Rectangular discharge opening is designed for flanged duct connections.

This submittal is meant to demonstrate general dimensions of this product. The drawings are not meant to detail every aspect of the product. Drawings are not to scale. Titus reserves the right to make changes without written notice.

All rights reserved. No part of this work may be reproduced or transmitted in any form or by any means, electronic or mechanical, including photocopying and recording, or by any information storage retrieval system without permission in writing from Air Distribution Technologies.