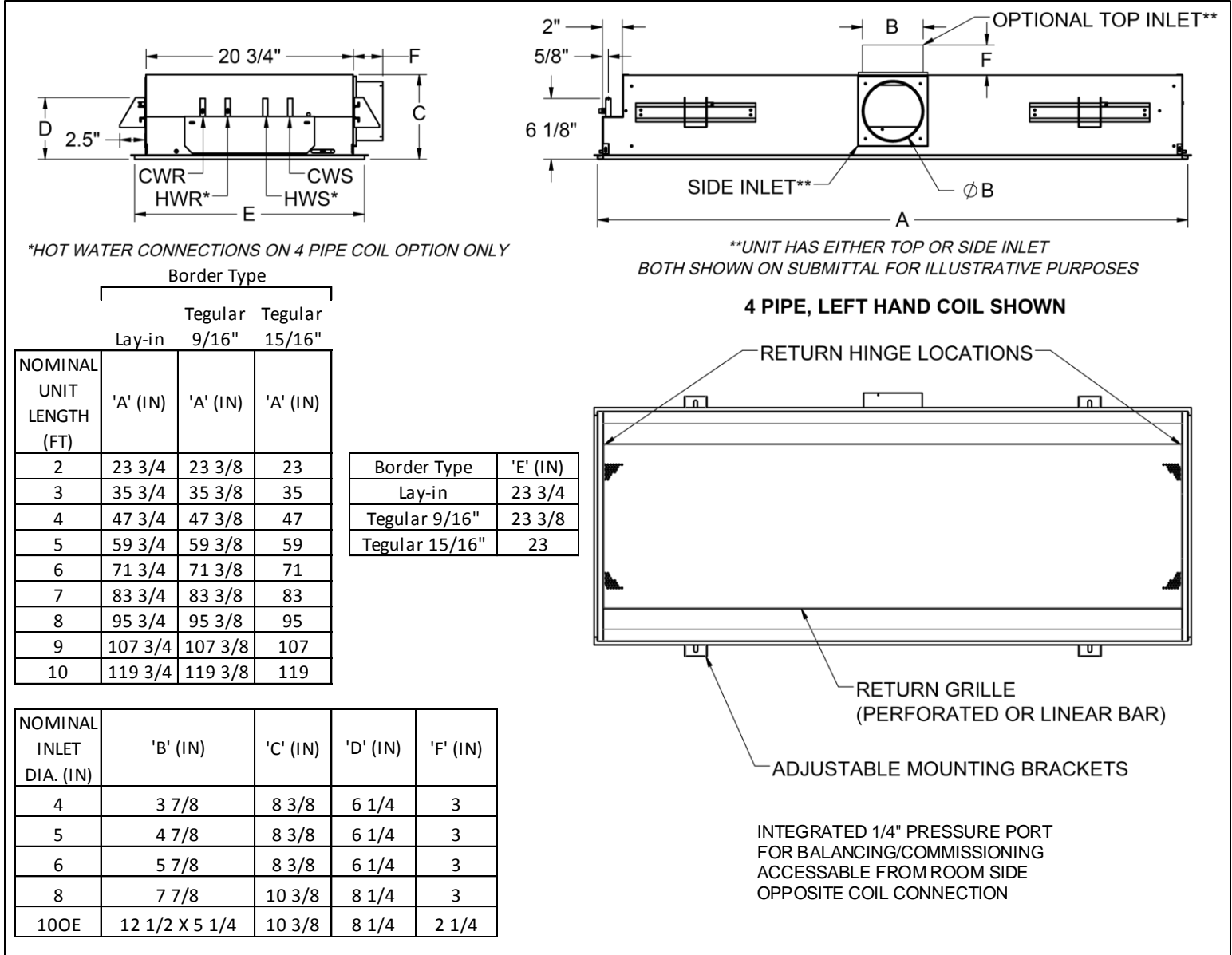


CBAL 24 • Linear Ceiling Mounted Chilled Beam • 1-Way & 2-Way Discharge • Horizontal Coil



General Description

- 24 inch wide, linear active chilled beam diffuser, available with 1-way or 2-way air distribution.
- Designed to fit into standard 24 inch ceiling grids, available with different borders.
- 2 to 10 feet chilled beam length in 1 foot increment.
- 2 pipe or 4 pipe coil configurations.
- Casing manufactured with galvanealed G90, 20 gauge sheet metal. Mechanically sealed, leak resistant construction.
- Coil with air vent and 1/2" water connection, available with sweat or threaded connection.

- Rails with adjustable mounting brackets are provided, quantity varies per unit length.
- 4, 5, 6 or 8 inch round and 10 inch oval inlet connection, located either on the side or top.
- Return face panel assembly is hinged, on both sides, allowing to swing open from either side or to be completely removed and provide easy access to internal components.
- Return face panel assembly available with round perforation or linear bar grille.
- Exterior face, border elements and visible internal components are painted in color of choice. Paint is powder coat, a mix of polyester and epoxy.

Basic Unit Configuration

Beam Width
(nominal- in)

 24

Unit Length (nominal - ft)

 2 3 4

 7 5 6

 8 9 10

Throw Pattern

 1 - Way towards inlet

 1 - Way away from inlet

 2 - Way

Nozzle Configuration

 B1 B2

 B3 B4

Primary Air Inlet
Diameter Connection
(inch)

 5 6 8 10*

*Note: 10" is equivalent oval

Primary Air Inlet
Orientation

 Side Top

Border Type

 Lay In

 Tegular 9/16" (NT)

Face Pattern

 Circular Perforation

Coil Type - Water
Side Connection

 2 Pipe - Left Hand

 2 Pipe - Right Hand

 4 Pipe - Left Hand

 4 Pipe - Right Hand

Coil Connection

 1/2" Sweat Connection

 1/2" MNPT Connection

 3/4" MNPT Connection

Exposed Face Finish
Color

 White #26

 Black #84

Accessories

Check if provided.

 1/2" - 12" Stainless Steel Flex Hose

 1/2" - 18" Stainless Steel Flex Hose

 1/2" - 24" Stainless Steel Flex Hose

 3/4" - 18" Stainless Steel Flex Hose

 3/4" - 24" Stainless Steel Flex Hose

Unit Option Details

OPTIONAL TOP INLET

WATER COIL CONNECTIONS
(4 PIPE, RIGHT HAND SHOWN)

ADJUSTABLE MOUNTING BRACKETS
USE 3/8" THREADED RODS TO SUSPEND TO CEILING
(x4 L = 2' TO 6')
(x8 L = 7' TO 10')

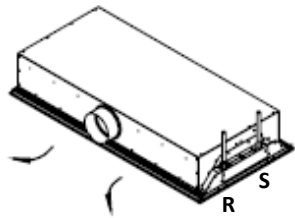
LB - LINEAR BAR GRILLE **CB - CIRCULAR PERFORATION**

BORDER TYPE

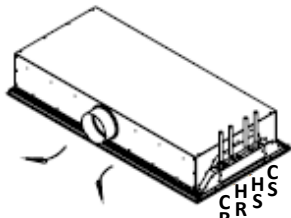
TEGULAR 9/16" **TEGULAR 15/16"** **LAY IN**

NOTE:
HAND OF UNIT IS DETERMINED BY FACING THE HORIZONTAL AIR INLET CONNECTION AND BY THE LOCATION OF THE COOLING WATER SUPPLY CONNECTION

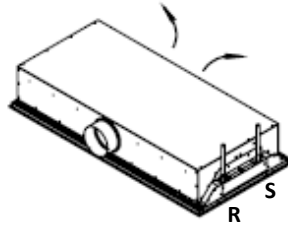
Inlet, Discharge and Piping Configuration



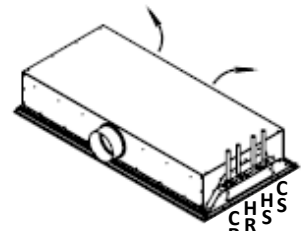
SIDE INLET
1 WAY 2 PIPE
RIGHT HAND
AIR FLOW FRONT



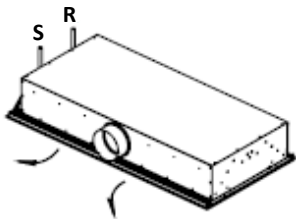
SIDE INLET
1 WAY 4 PIPE
RIGHT HAND
AIR FLOW FRONT



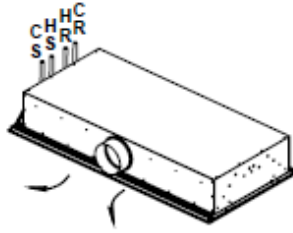
SIDE INLET
1 WAY 2 PIPE
RIGHT HAND
AIR FLOW BACK



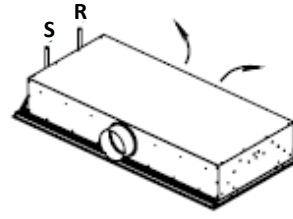
SIDE INLET
1 WAY 4 PIPE
RIGHT HAND
AIR FLOW BACK



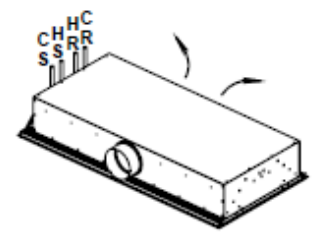
SIDE INLET
1 WAY 2 PIPE
LEFT HAND
AIR FLOW FRONT



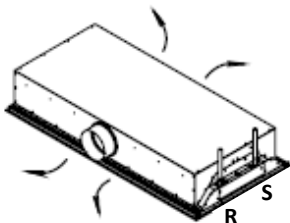
SIDE INLET
1 WAY 4 PIPE
LEFT HAND
AIR FLOW FRONT



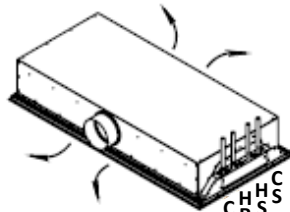
SIDE INLET
1 WAY 2 PIPE
LEFT HAND
AIR FLOW BACK



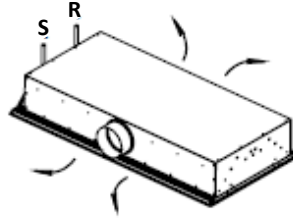
SIDE INLET
1 WAY 4 PIPE
LEFT HAND
AIR FLOW BACK



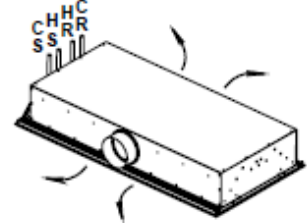
SIDE INLET
2 WAY 2 PIPE
RIGHT HAND



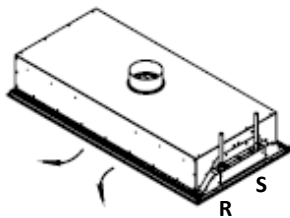
SIDE INLET
2 WAY 4 PIPE
RIGHT HAND



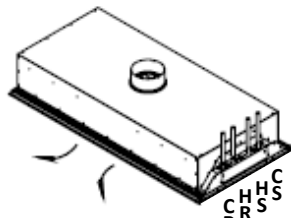
SIDE INLET
2 WAY 2 PIPE
LEFT HAND



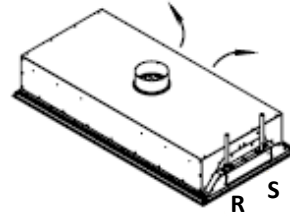
SIDE INLET
2 WAY 4 PIPE
LEFT HAND



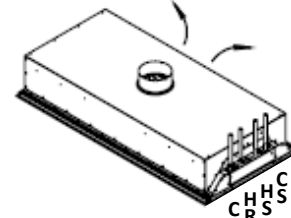
TOP INLET
1 WAY 2 PIPE
RIGHT HAND
AIR FLOW FRONT



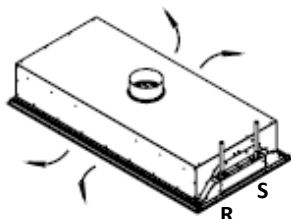
TOP INLET
1 WAY 4 PIPE
RIGHT HAND
AIR FLOW FRONT



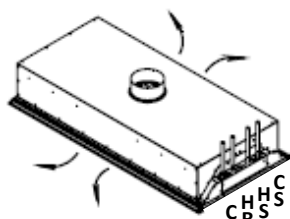
TOP INLET
1 WAY 2 PIPE
RIGHT HAND
AIR FLOW BACK



TOP INLET
1 WAY 4 PIPE
RIGHT HAND
AIR FLOW BACK



TOP INLET
2 WAY 2 PIPE
RIGHT HAND



TOP INLET
2 WAY 4 PIPE
RIGHT HAND

R - Return S - Supply;

HR - Heating Return HS - Heating Supply;

CR - Cooling Return CS - Cooling Supply