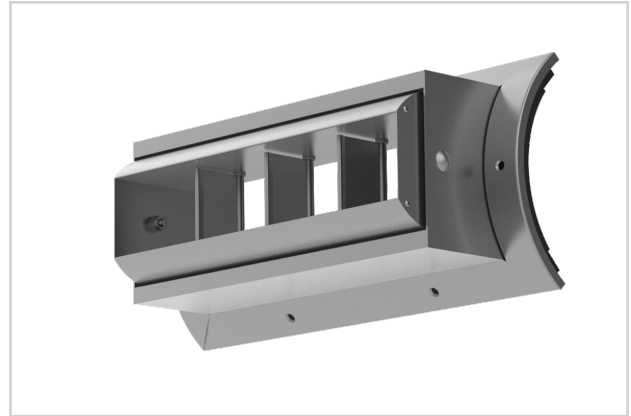


S-DL / S-DL-SV

- Well suited for installations where the conditioned space is large and it is impractical to bring the duct work close to the occupants
- Models S-DL and S-DL-SV mount directly to spiral duct eliminating the need for duct taps and reducing installation costs and time
- Optional split-vane option allows bi-directional horizontal throw
- Great for applications requiring high air volumes or long throws
- Length of throw, plus horizontal and vertical direction, can be adjusted by means of the rotating drum and pivoted adjustable blades
- Felt seal between the drum and border frame prevents leakage and holds the drum securely in the position selected
- 2"-blade spacing option



S-DL / S-DL-SV



duct mounted

factories

gymnasiums

open areas

airport terminals

MODELS:

S-DL / Single Vane / Universal End Cap
S-DL-SV / Split Vane / Universal End Cap

FINISHES:

Standard Finish - #26 White
Optional Finishes - #01 Aluminum or #84 Black

OVERVIEW

High Capacity / Long Throw

The Titus S-DL drum louvers have a custom curved frame to attach to a variety of duct diameters without the use of a duct tap. They are great for shopping malls, warehouses, sports arenas, factories and other large open areas where air must be thrown over a large distance. The high capacity long throws and rugged construction make them an ideal choice for any commercial / industrial application.

PRODUCTS INCLUDE

- Material: Aluminum extruded border and blades
- Optional air extractor or heavy-duty damper with a screwdriver operator accessible through the face
- Foam gaskets for tight seal to spiral duct

 See website for Specifications



Installation images of the S-DL drum louvers installed in an open ceiling office environment

