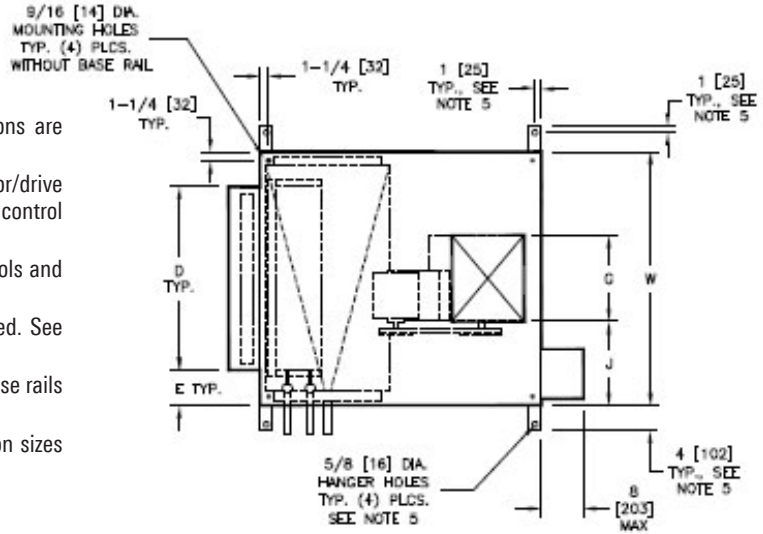


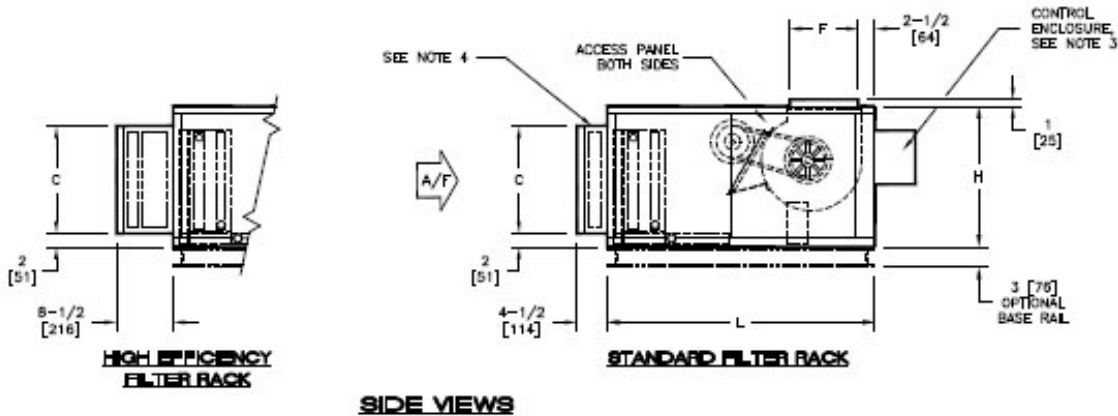
TBH UNIT DIMENSIONS / DISCHARGE ARRANGEMENT 2

Notes:

1. All dimensions are inches [millimeters]. All dimensions are $\pm 1/4"$ [6mm]. Metric values are soft conversion.
2. Right hand unit shown, left hand unit opposite. Motor/drive location may be specified Left or Right Hand. Standard control enclosure location matches motor/drive position.
3. Provide sufficient clearance to permit access to controls and comply with applicable codes and ordinances
4. Flat filter rack may be located at unit inlet as required. See drawing for filter rack details.
5. Base rail is optional on the base unit. See drawing. Base rails must be used with mixing box.
6. See coil connection detail drawings for coil connection sizes and locations



TOP VIEW



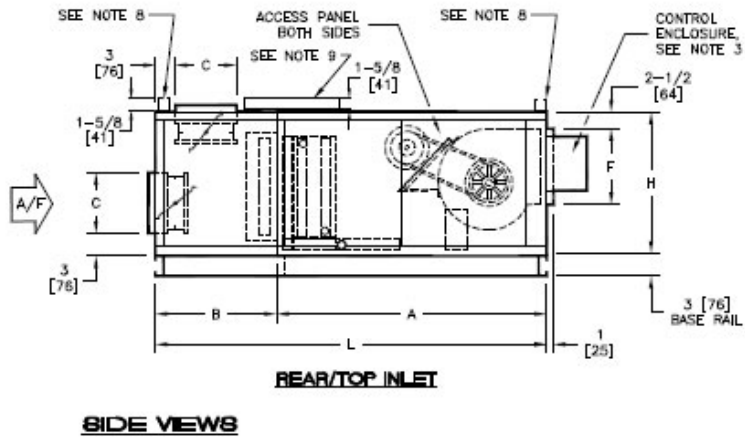
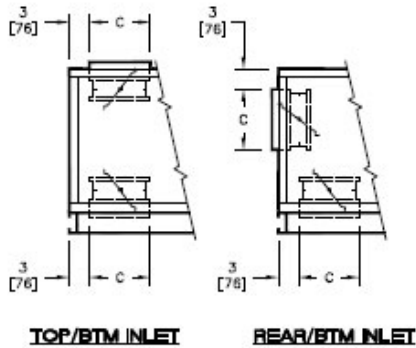
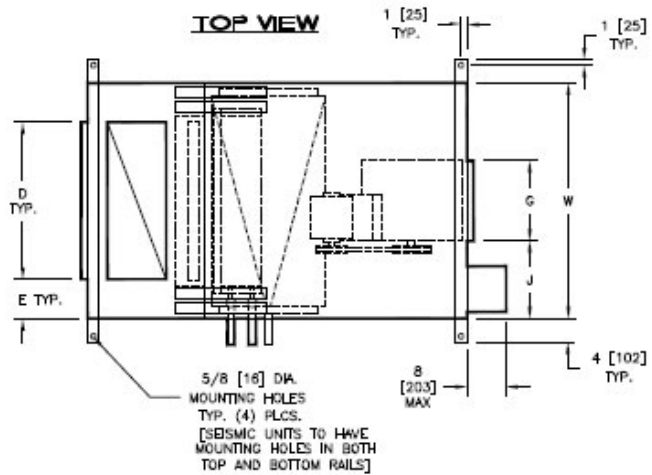
SIDE VIEWS

Dimensions								
Unit Size	Fan Size	W	C	D	E	F	G	J
08	9 x 4 [229 x 102]	30 [762]	16 [406]	20 [508]	5 [127]	10 1/4 [260]	6 7/8 [175]	11 9/16 [294]
12	9 x 6 [229 x 152]	36 [914]	16 [406]	25 [635]	5 1/2 [140]	11 1/4 [286]	8 1/4 [210]	13 7/8 [352]
16	10 x 8 [254 x 203]	44 [1118]	16 [406]	39 1/2 [1003]	2 1/4 [57]	13 1/2 [343]	10 1/4 [260]	16 7/8 [429]
20	10 x 10 [254 x 254]	50 [1270]	16 [406]	44 1/2 [1130]	2 3/4 [70]	13 1/2 [343]	13 1/4 [337]	18 3/8 [467]
30	15 x 9 [381 x 229]	59 [1499]	25 [635]	51 [1295]	4 [102]	16 [406]	13 1/4 [337]	22 7/8 [581]
40	15 x 11 [381 x 279]	68 [1727]	25 [635]	59 [1499]	4 1/2 [114]	16 [406]	15 [381]	26 1/2 [673]

TBH UNIT DIMENSIONS / DISCHARGE ARRANGEMENT WITH MIXING BOX

Notes:

1. All dimensions are inches [millimeters]. All dimensions are $\pm 1/4"$ [6mm]. Metric values are soft conversion.
2. Right hand unit shown, left hand unit opposite. Motor/drive location may be specified Left or Right Hand. Standard control enclosure location matches motor/drive position.
3. Provide sufficient clearance to permit access to controls and comply with applicable codes and ordinances
4. Outside and return air damper linkage is optional
5. See coil connection detail drawings for coil connection sizes and locations
6. High efficiency filter rack not available with mixing box
7. Top rails provided with seismic certified option (Add $1 5/8"$ to "H" dimension).
8. Top rails provided on size 30 & 40 units with mixing box and seismic certified option



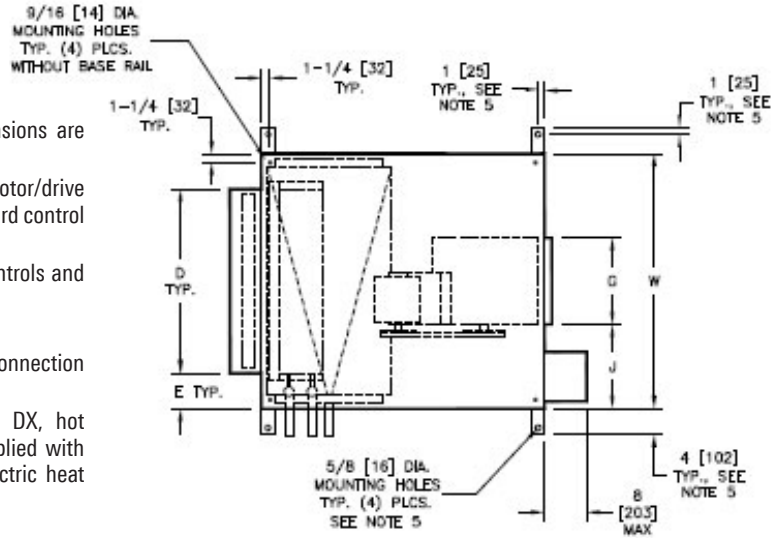
Dimensions												
Unit Size	Fan Size	L	W	H	A	B	C	D	E	F	G	J
08	9 x 4 [229 x 102]	58 [1473]	30 [762]	21 [533]	40 [1016]	18 [457]	9 [229]	18 [457]	6 [152]	10 1/4 [260]	6 7/8 [175]	11 9/16 [294]
12	9 x 6 [229 x 152]	58 [1473]	36 [914]	21 [533]	40 [1016]	18 [457]	9 [229]	24 [610]	6 [152]	11 1/4 [286]	8 1/4 [210]	13 7/8 [352]
16	10 x 8 [254 x 203]	58 [1473]	44 [1118]	21 [533]	40 [1016]	18 [457]	9 [229]	30 [762]	7 [178]	11 3/8 [289]	10 1/4 [260]	16 7/8 [429]
20	10 x 10 [254 x 254]	61 [1549]	50 [1270]	21 [533]	40 [1016]	21 [533]	12 [305]	36 [914]	7 [178]	11 3/8 [289]	13 1/4 [337]	18 3/8 [467]
30	15 x 9 [381 x 229]	67 [1702]	59 [1499]	30 [762]	46 [1168]	21 [533]	12 [305]	45 [1143]	7 [178]	16 [406]	13 1/4 [337]	22 7/8 [581]
40	15 x 11 [381 x 279]	70 [1778]	68 [1727]	30 [762]	46 [1168]	24 [610]	15 [381]	48 [1219]	10 [254]	16 [406]	15 [381]	26 1/2 [673]



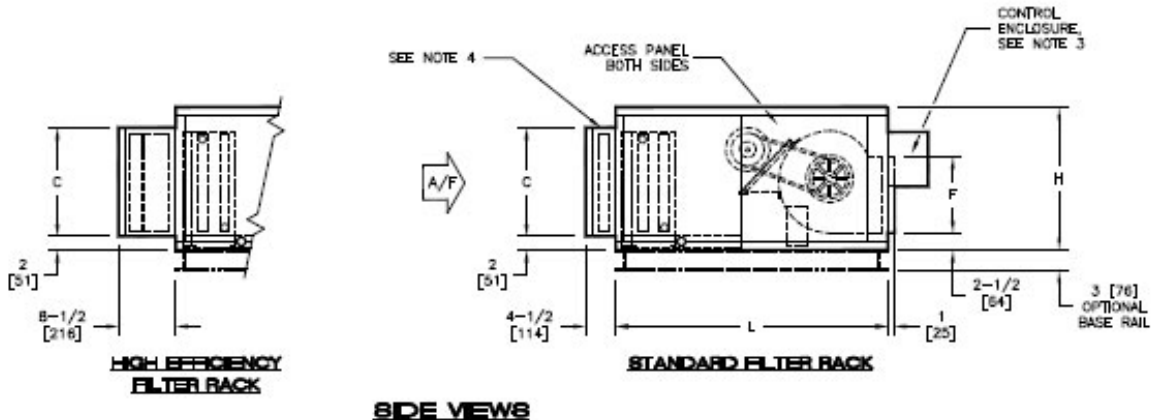
TBH UNIT DIMENSIONS / DISCHARGE ARRANGEMENT 4

Notes:

1. All dimensions are inches [millimeters]. All dimensions are $\pm 1/4"$ [6mm]. Metric values are soft conversion.
2. Right hand unit shown, left hand unit opposite. Motor/drive location may be specified Left or Right Hand. Standard control enclosure location matches motor/drive position.
3. Provide sufficient clearance to permit access to controls and comply with applicable codes and ordinances
4. Outside and return air damper linkage is optional
5. See coil connection submittal drawings for coil connection sizes and locations
6. Units with electric heat only (no chilled water, DX, hot water or steam coils) and a drain pan will be supplied with condensate drain outlet the same side as the electric heat control enclosure



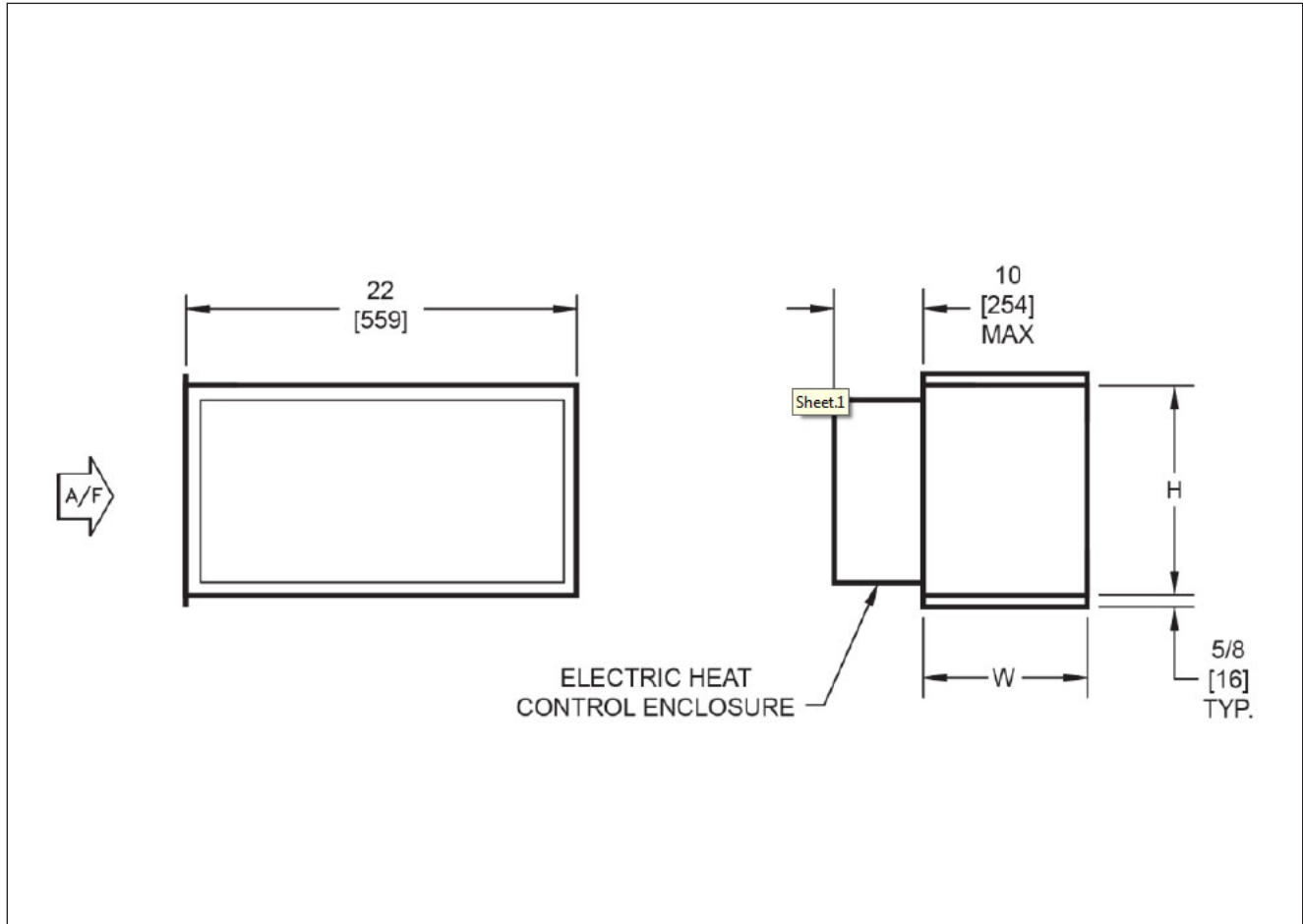
TOP VIEW



SIDE VIEWS

Dimensions										
Unit Size	Fan Size	L	W	H	C	D	E	F	G	J
08	9 x 4 [229 x 102]	40 [1016]	30 [762]	21 [533]	16 [406]	20 [508]	5 [127]	11 7/8 [302]	8 7/8 [225]	10 9/16 [268]
12	9 x 6 [229 x 152]	40 [1016]	36 [914]	21 [533]	16 [406]	25 [635]	5 1/2 [140]	11 7/8 [302]	8 7/8 [225]	13 9/16 [344]
16	10 x 8 [254 x 203]	40 [1016]	44 [1118]	21 [533]	16 [406]	39 1/2 [1003]	2 1/4 [57]	12 [305]	10 7/8 [276]	16 9/16 [421]
20	10 x 10 [254 x 254]	40 [1016]	50 [1270]	21 [533]	16 [406]	44 1/2 [1130]	2 3/4 [70]	12 [305]	13 7/8 [352]	18 1/16 [459]
30	15 x 9 [381 x 229]	46 [1168]	59 [1499]	30 [762]	25 [635]	51 [1295]	4 [102]	16 5/8 [1143]	13 7/8 [352]	22 9/16 [573]
40	15 x 11 [381 x 279]	46 [1168]	68 [1727]	30 [762]	25 [635]	59 [1499]	4 1/2 [114]	16 5/8 [1143]	15 5/8 [397]	21 11/16 [551]

TBH / TBV, BLOW-THRU ELECTRIC HEAT



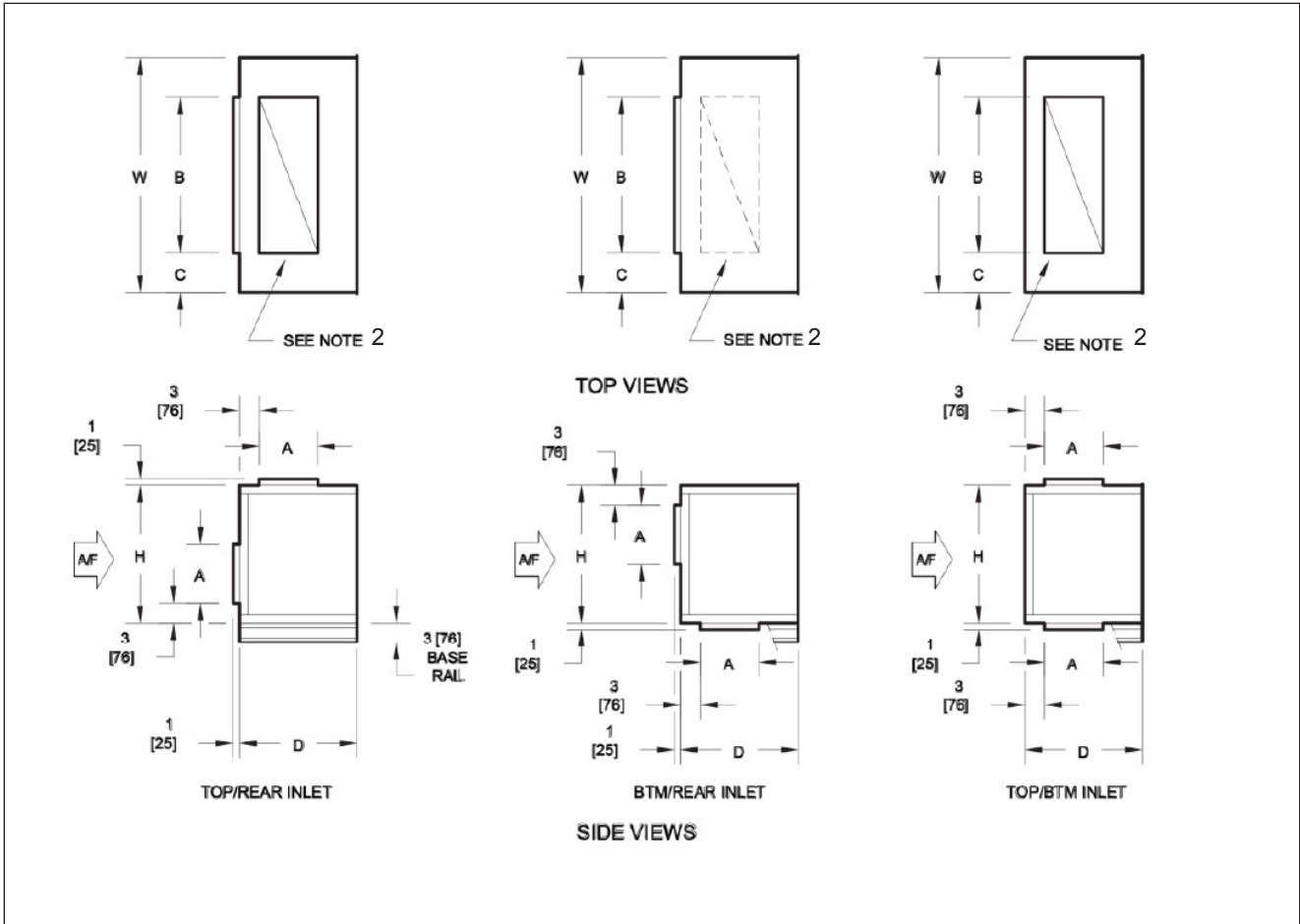
Notes:

1. All dimensions are inches [millimeters]. All dimensions are $\pm 1/4$ " [6mm]. Metric values are soft conversion.
2. Motor/drive location may be specified Left or Right Hand. Standard control enclosure location matches motor/drive position
3. Provide sufficient clearance to permit access to controls and comply with applicable codes and ordinances
4. Available for horizontal discharge only

BLOW-THRU ELECTRIC HEAT SECTION

Unit Size	H	W	Weight lbs [kg]
08	11 ⁷ / ₈ [302]	8 ⁷ / ₈ [225]	42 [19]
12	11 ⁷ / ₈ [302]	8 ⁷ / ₈ [225]	42 [19]
16	12 [305]	10 ⁷ / ₈ [278]	42 [19]
20	12 [305]	13 ⁷ / ₈ [352]	50 [23]
30	16 ⁵ / ₈ [422]	13 ⁷ / ₈ [352]	55 [25]
40	16 ⁵ / ₈ [422]	15 ⁷ / ₈ [397]	55 [25]

TBH / TBV STANDARD MIXING BOX



Notes:

1. All dimensions are inches [millimeters]. All dimensions are $\pm 1/4"$ [6mm]. Metric values are soft conversion.
2. Damper drive rods are internal, located on both sides of unit
3. Mixing box includes space for standard flat filter rack
4. Base rails are including with mixing box

Dimensions						
Unit Size	H	W	A	B	C	D
08	21 [533]	30 [762]	9 [229]	18 [457]	6 [152]	18 [457]
12	21 [533]	36 [914]	9 [229]	24 [610]	6 [152]	18 [457]
16	21 [533]	44 [1118]	9 [229]	30 [762]	7 [178]	18 [457]
20	21 [533]	50 [1270]	12 [305]	36 [914]	7 [178]	21 [533]
30	30 [762]	59 [1499]	12 [305]	45 [1143]	7 [178]	21 [533]
40	30 [762]	68 [1727]	15 [381]	48 [1219]	10 [254]	24 [610]