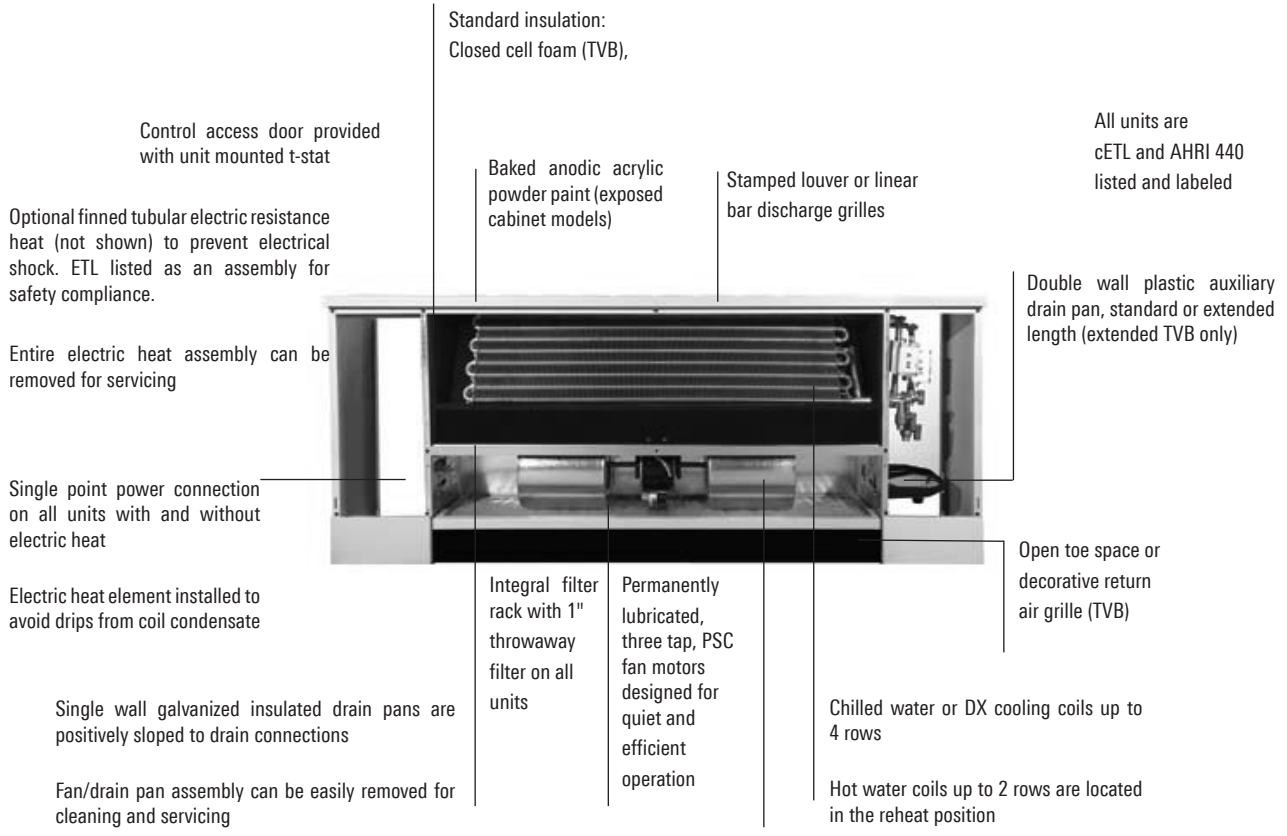


MODEL TVBF

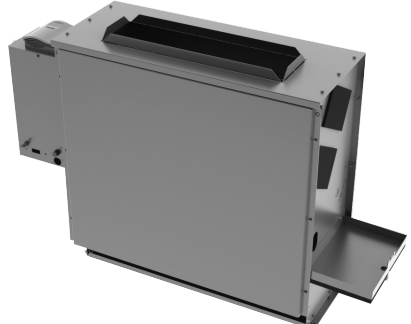
(Photo as shown for TVBF). TVB Series fan coils have many standard and optional features which are unique to the industry.



MODEL TVBA
Vertical Sloped Top



MODEL TVBC
Vertical Concealed



Redefine your comfort zone.™ | www.titus-hvac.com



CONSTRUCTION FEATURES



END POCKETS

The 7.5" end pockets allow for accessibility and service of optional factory piping packages and controls. End panels are removable to allow for even greater access.



COILS

All fan coils are available in 2 or 4 pipe configurations. The heating coil is standard in the reheat position. Heating and cooling coils are available with the same or opposite end connections. Access for cleaning on the entering air side is available when the drain pan is removed. Coils are removable for service.



FAN DECK

The fan/drain pan assembly is easily removable for service access to motors and blowers at, or away from, the unit.

DRAIN PAN

The sloped insulated primary drain pan is available in stainless steel construction. Standard drain pan is externally insulated, single wall galvanized steel. The TVB Series fan/drain pan assembly is easily removable for cleaning.

POWDER COAT PAINTED SURFACE

Exposed cabinet Models TVBF and TVBA, as well as supply and return air grilles and the TVBC wall recessing panel, feature a powder coat finish that resists scuffing, scratching, fading, and fingerprints.



FILTER

The filter is easily replaceable through the return air toe space without requiring removal of the front panel.



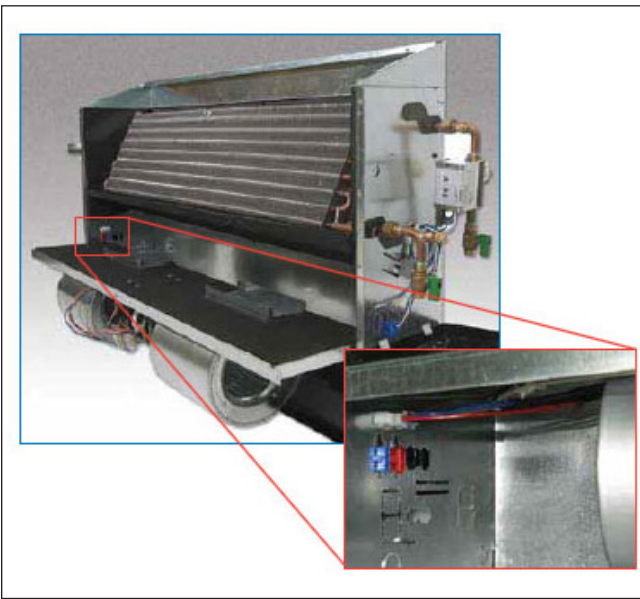
LID REMOVAL

Top panel is removable from fan coil without the need to disconnect piping or electrical wires.



CONTROL ENCLOSURE

The TVB control enclosure provides adequate space for the unit controller and fan coil relay. The fan coil relay is designed to limit diagnostic problems, while allowing for multi-voltage fan power input. The board is designed for factory installed, color coded, plug and play connections designed to ensure accurate wiring.



FAN DECK REMOVAL

TVB units allow for a single technician to service the fan/motor by keeping the fan deck to less than 44". Motors are supplied with quick connectors to allow electrical service without the need for tools.



PIPING PACKAGES

Factory installed piping packages come equipped with components specific to the project. Actuators ship with color coded plug and play connections for quick, accurate installations. Opposite end coil connections are available.