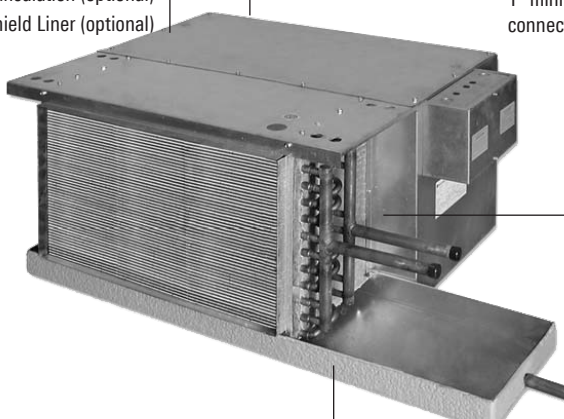


MODEL THHP

HORIZONTAL PLENUM RETURN

(Photo as shown for THHP). THH Series fan coils have many standard and optional features which are unique to the industry.



1/2" thick fiberglass insulation (standard) or foil faced or elastomeric closed cell foam insulation (optional) or EcoShield Liner (optional)

Galvanized steel casing withstanding 125 hour salt spray test per ASTM B-117

1" minimum duct collar allows quick field connection of duct work

Integral filter rack with 1" filter and integral rear ducted (shown) or bottom return on all plenum units. Optional 2" filter available.

ETL and AHRI 440 listed and labeled

Chilled water or DX cooling coils up to 6 rows

Hot water heating coils up to 4 rows, or steam coils up to 2 rows can be mounted in the preheat or reheat position. Maximum of 8 rows total.

Permanently lubricated, three tap, PSC fan motors designed for quiet and efficient operation

Single point power connection on all units with electric heat

Optional electric resistance heat is ETL listed as an assembly for safety compliance

Single wall galvanized or stainless steel (optional) drain pans are positively sloped to drain connections

Removable fan assembly for bottom or rear access and servicing

Enclosure allows easy side access to all electrical components

Drain pans can be easily removed for cleaning, and reversed for opposite side drain connections

Optional auxiliary drain connection for added security (not shown)

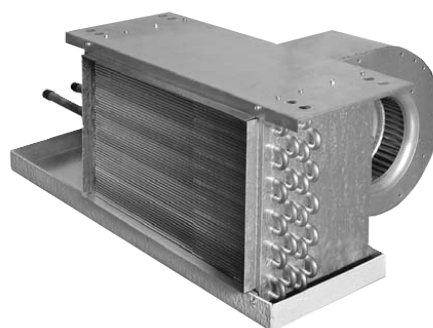
MODEL THHE

Horizontal Exposed Cabinet



MODEL THHC

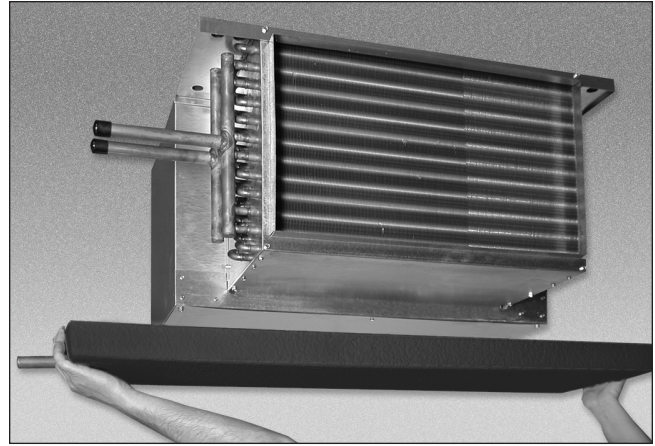
Horizontal Free Return





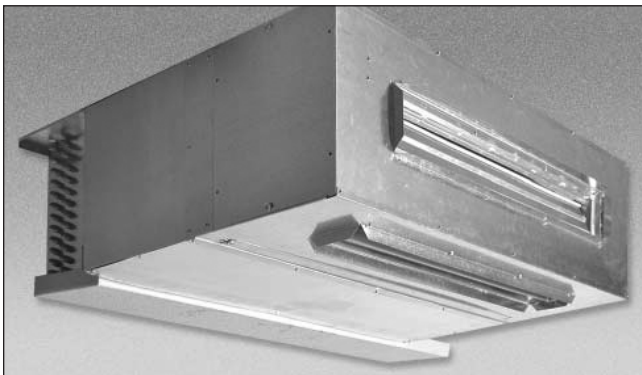
ELECTRICAL ENCLOSURE

The side access electrical enclosure provides access to all electric heat and control components. Terminal strips are furnished for simple power and control wiring connections. Multiple knockouts allow wiring entries from either side of the compartment.



DRAIN PAN

Standard drain pans are externally insulated, single wall galvanized steel with an option for stainless steel. Drain pans are available with secondary drain connection. On concealed models, the THH Series drain pan is easily removable for cleaning or reversing connections.



MIXING BOX

The optional fully insulated mixing box section comes completely assembled to the THHP unit, featuring low leakage, heavy gauge steel dampers with integral linkage. Damper positioning is field configurable and bottom filter access is standard. A factory provided and installed damper actuator is also available.

COILS

All fan coils are available in 2 or 4 pipe configurations. The heating coil may be placed in the reheat or preheat position. Heating and cooling coils are field reversible for right or left side connections.



FILTERS

One inch throwaway filters are tight fitting to prevent air bypass. Filters are easily removable from the bottom without the need for tools. The filter rack is convertible from rear to bottom return without the need for additional parts. Optional 1" and 2" pleated filters are available for use with the THHP unit.

POWDER COAT PAINTED SURFACE

Exposed cabinet Model THHE features powder coat finish that resists scuffing, scratching, fading, and fingerprints.