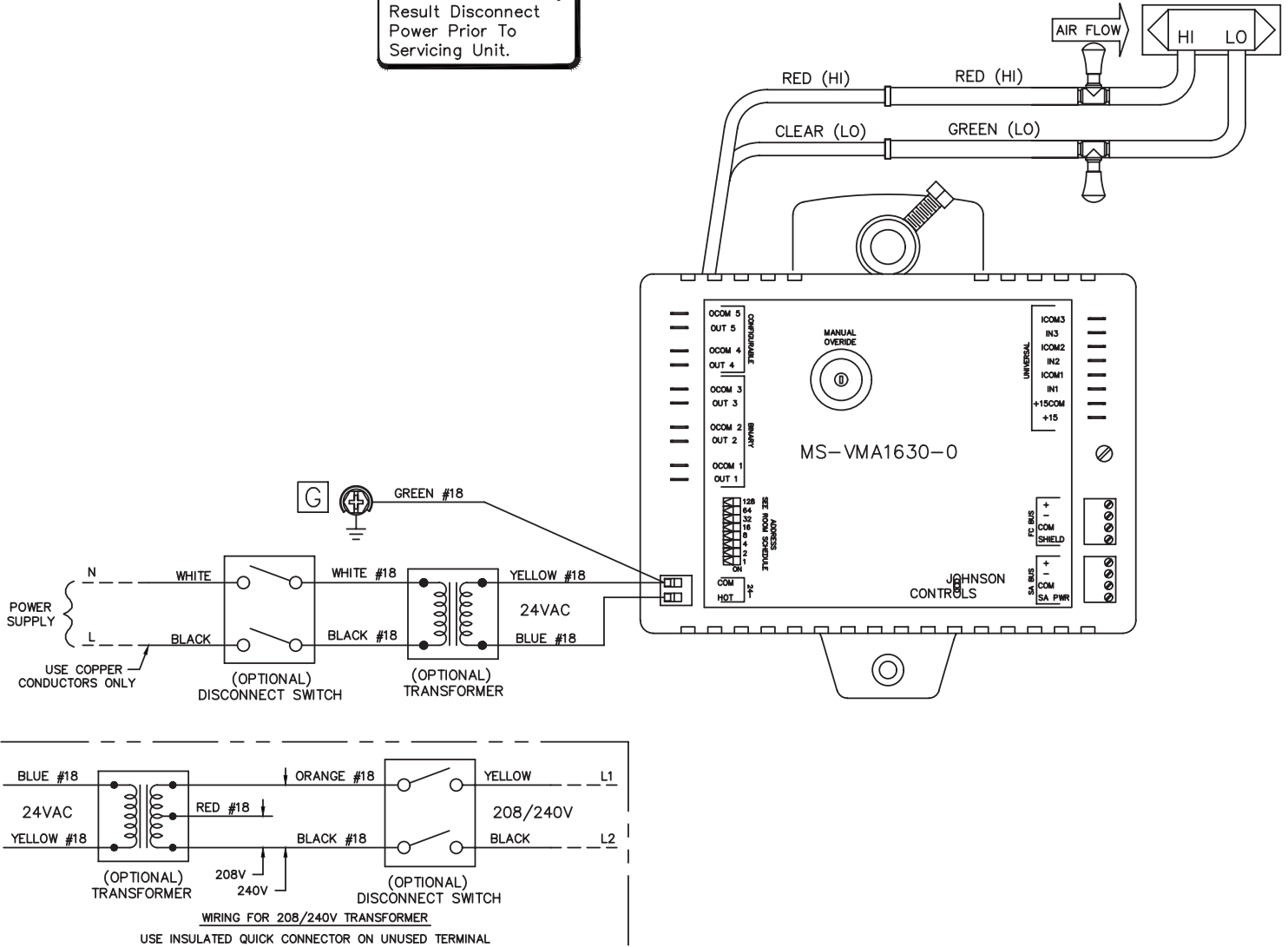


**Caution:**  
Electrical Shock May  
Result Disconnect  
Power Prior To  
Servicing Unit.



**ACTUATOR NOTE:** PRIOR TO LINKING DAMPER DEPRESS MANUAL OVERRIDE BUTTON AND ROTATE ACTUATOR COLLAR FULLY CLOCKWISE. LINK DAMPER OPEN. MOTOR TURNS COUNTER CLOCKWISE TO CLOSE.

PROJECT:

ENGINEER:

CUSTOMER:

DATE: \_\_\_\_\_

SPEC. SYM.: \_\_\_\_\_