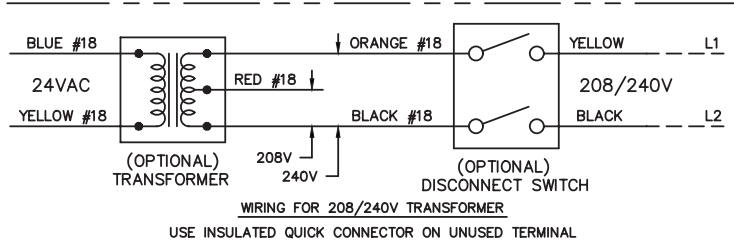


Caution:
Electrical Shock May Result Disconnect Power Prior To Servicing Unit.



ACTUATOR NOTE: PRIOR TO LINKING DAMPER DEPRESS MANUAL OVERRIDE BUTTON AND ROTATE ACTUATOR COLLAR FULLY CLOCKWISE. LINK DAMPER OPEN. MOTOR TURNS COUNTER CLOCKWISE TO CLOSE.

PROJECT:	DATE:
ENGINEER:	SPEC. SYM.:
CUSTOMER:	