

Grille and Diffuser Accessories

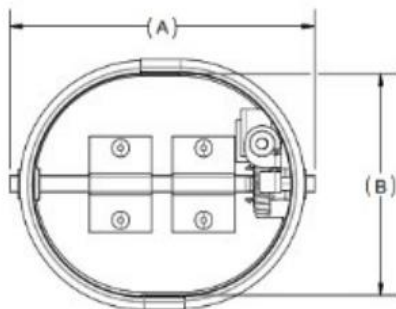
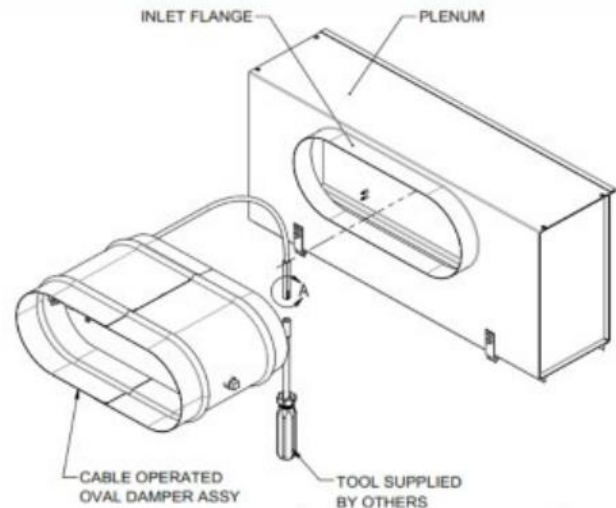
Cable-Operated Oval Damper for Linear Plenums - Steel

Models: ☐ CDP

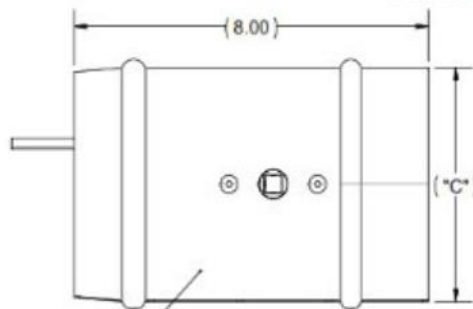
☐ Type B – Oval

Dimensional Table (Inches)

Oval Size	A	B	C	D
06	6 7/8	5	5 1/4	5 7/8
08	11 1/2			9 1/8
10	13 1/2			12 1/4
12	15 1/2	7 5/8	7 7/8	13 7/8

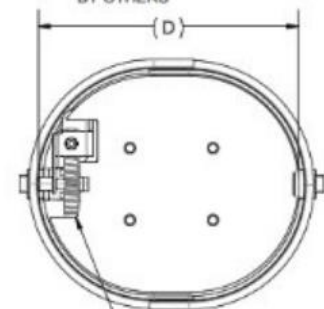


TOP VIEW



SLEEVE

SIDE VIEW



WORM GEAR ASSEMBLY

BOTTOM VIEW

Dimensions are in inches (mm)

Accessories and Options Check ☒ if provided.

☐ 24" Cable (Default)

☐ 60" Cable

☐ 72" Cable

☐ 36" Cable

☐ 48" Cable

☐ 96" Cable

General Description

- Standard frame material: 24 GA galvanized steel, blade: 20 GA galvanized steel, cable: 1/4" dia galvanized steel
- Standard finish is Mill
- Damper is adjusted by hand or using a nut driver, cable is routed through plenum and diffuser to provide face access.
- Easy final field assembly; attach cable to damper operator and attach damper to plenum inlet.

This submittal is meant to demonstrate general dimensions of this product. The drawings are not meant to detail every aspect of the product. Drawings are not to scale.

Titus reserves the right to make changes without written notice.

All rights reserved. No part of this work may be reproduced or transmitted in any form or by any means, electronic or mechanical, including photocopying and recording, or by any information storage retrieval system without permission in writing from Air Distribution Technology, Inc.

Grille and Diffuser Accessories

Cable-Operated Round Damper for Round Ducts or inlets - Steel

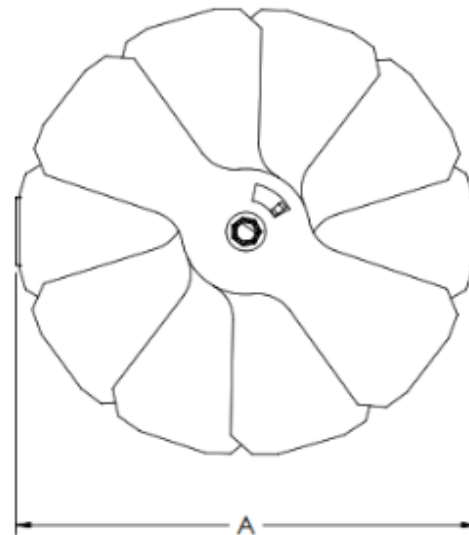
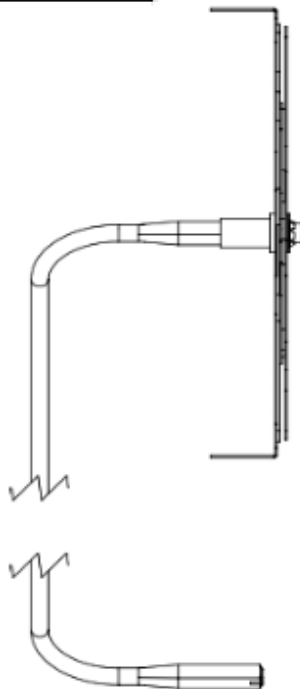
Models: ☐ CDP

Dimensional Table (Inches)

Round Size	A
06	5 3/4
08	7 3/4
10	9 3/4
12	11 3/4

☐ Type 0 – Round

- ☐
☐
☐
☐



Dimensions are in inches (mm)

Accessories and Options Check ☒ if provided.

- ☐ 24" Cable (Default)
 ☐ 48" Cable
 ☐ 96" Cable
☐ 36" Cable
 ☐ 60" Cable
 ☐ 72" Cable

General Description

- Standard material is galvanized steel, cable: 1/4" dia galvanized steel
- Standard finish is Mill
- Standard cable length is 24", optional extension and coupling for longer lengths
- Damper is adjusted by hand or using a nut driver, cable is routed through plenum and diffuser to provide face access.
- Easy final field assembly; attach cable to damper operator and attach damper to plenum inlet.

This submittal is meant to demonstrate general dimensions of this product. The drawings are not meant to detail every aspect of the product. Drawings are not to scale.

Titus reserves the right to make changes without written notice.

All rights reserved. No part of this work may be reproduced or transmitted in any form or by any means, electronic or mechanical, including photocopying and recording, or by any information storage retrieval system without permission in writing from Air Distribution Technology, Inc.