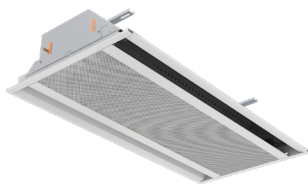


# Chilled Beam Product Offering



CBAL2

- Active linear chilled beam with 1-way or 2-way air distribution patterns
- Optimized nozzle design provides high capacity and low noise levels
- 2-pipe or 4-pipe for heating and cooling
- Designed to fit in standard 24-inch ceiling systems
- Multi-inlet option and field reversible coils provide installation flexibility
- Optimized diffuser geometry maximizes occupant comfort
- 24-inch width / 2-10ft lengths
- Up to 35 CFM and 1700 Btu/h sensible cooling per linear foot



CBE2-24

- Exposed active linear chilled beam with 1-way or 2-way air distribution patterns
- Designed for for open ceiling applications
- Optimized nozzle design provides high capacity and low noise levels
- 2-pipe or 4-pipe for heating and cooling
- Integral Coanda plates for ceiling independent operation
- Optimized diffuser geometry maximizes occupant comfort
- 32-inch width / 2-10ft lengths
- Up to 35 CFM and 1700 Btu/h sensible cooling per linear foot



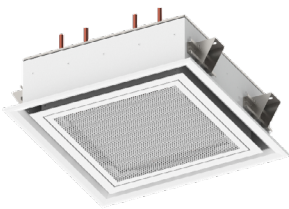
CBLV-12

- Active linear chilled beam with 1-way or 2-way air distribution patterns
- Optimized nozzle design provides high capacity and low noise levels
- 2-pipe or 4-pipe for heating and cooling
- Vertical coil with condensate pan
- Optimized diffuser geometry maximizes occupant comfort
- 12-inch width / 2-10ft lengths
- Up to 35 CFM and 1300 Btu/h sensible cooling per linear foot



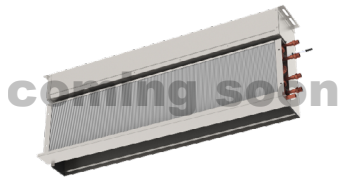
CBE2-12

- Exposed active linear chilled beam with 1-way or 2-way air distribution patterns
- Designed for for open ceiling applications
- Optimized nozzle design provides high capacity and low noise levels
- 2-pipe or 4-pipe for heating and cooling
- Integral Coanda plates for ceiling independent operation
- Vertical coil with condensate pan
- Optimized diffuser geometry maximizes occupant comfort
- 22-inch width / 2-10ft lengths
- Up to 35 CFM and 1300 Btu/h sensible cooling per linear foot



CBAM

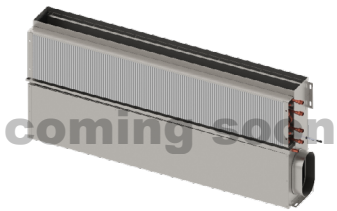
- Active modular chilled beam with 4-way air distribution pattern
- Optimized nozzle design provides high capacity and low noise levels
- Designed to fit in standard 24-inch ceiling systems
- Optimized diffuser geometry maximizes occupant comfort
- 24-inch x 24-inch or 48-inch x 24-inch module sizes
- Up to 100 CFM and 4500 Btu/h sensible cooling per beam



CBAV

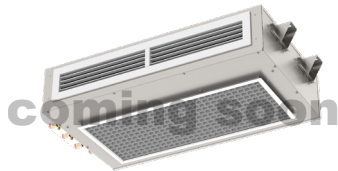
- Active chilled beam for use in recessed applications
- Optimized nozzle design provides high capacity and low noise levels
- Designed to integrate with Titus LL-1 and ML-39 slot diffusers
- Vertical coil with condensate pan
- Up to 18 CFM and 1100 Btu/h sensible cooling per linear foot

# Chilled Beam Product Offering



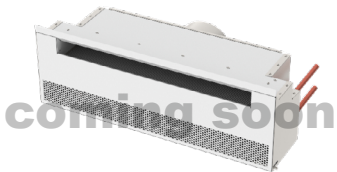
CBAS

- Sill mounted, concealed active chilled beam
- Provides comfortable, effective sensible cooling to the space
- Optimized nozzle design provides high capacity and low noise levels
- Ideal for induction unit and unit ventilator retrofit projects
- Up to 18 CFM and 1100 Btu/h sensible cooling per linear foot



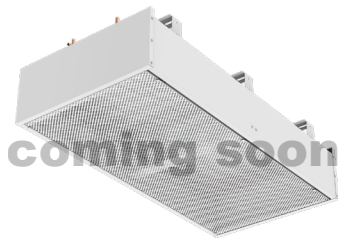
CBAB

- Horizontal throw, bulkhead mounted active chilled beam
- Provides comfortable, effective sensible cooling to the space
- Optimized nozzle design provides high capacity and low noise levels
- Ideal for single room hospitality spaces
- Up to 18 CFM and 1300 Btu/h sensible cooling per linear foot



CBAW

- Horizontal throw, sidewall mounted active chilled beam
- Provides comfortable, effective sensible cooling to the space
- Optimized nozzle design provides high capacity and low noise levels
- Ideal for multi-story residential and hospitality spaces
- Quick and simple installation



CBPE

- Exposed passive chilled beams
- Provides comfortable, effective sensible cooling to the space
- Ultra quiet, natural convection driven operation
- Ideal for exposed installations or can be integrated into lay-in ceiling systems



CBHK

- Compatible with all Titus chilled beams
- 1/2" and 3/4" female connections available
- Quick and simple installation



TCFR

- Provides flow rate adjustability at each beam
- Automatic Air Balancing
- Pressure independent across rated pressure range