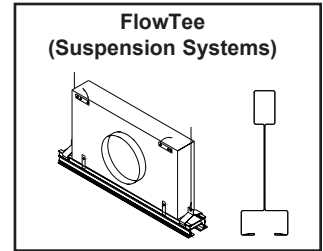
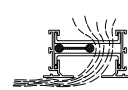


FlowBar™ Architectural Ceiling Diffusers Aluminum • FlowTee • Bolt-Slot (for Suspension Systems only)

- Models: MFTB-10 • 25 Slot • Bolt-Slot**
MFTB-15 • 38 Slot • Bolt-Slot
MFTB-20 • 51 Slot • Bolt-Slot
MFTBI-10 • 25 Slot • Bolt-Slot • Insulated
MFTBI-15 • 38 Slot • Bolt-Slot • Insulated
MFTBI-20 • 51 Slot • Bolt-Slot • Insulated



Standard HighThrow pattern controller shown. Optional JetThrow pattern controller available as an option.



HighThrow



JetThrow

Borders 13, 11, 33

Check if provided

Inlet

- 152
 203
 254
 305

Length

- 610 mm
 1219 mm

Slots

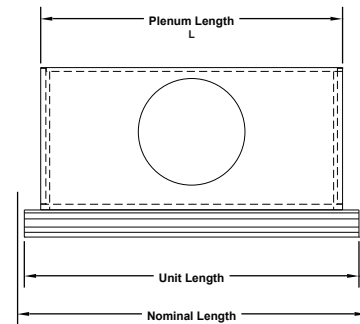
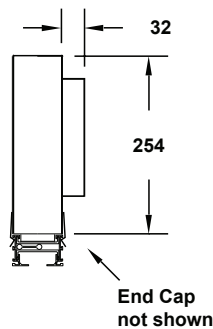
- 1
 2 CRN
 2 CRA
 2 CRB

Pattern Controller

- HighThrow
 JetThrow

Border

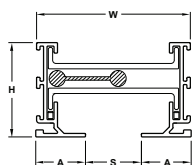
- 11
 13
 33



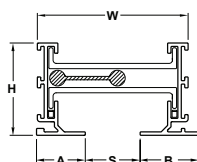
FlowTee Model	W (Width)				Nominal Length	Available Inlets (Inches)		Plenum Length (Inches) L	Unit Length (Inches)	
	Slots					Rnd	Oval		Bolt-Slot	Bolt-Slot
	1	2 CRN	2CRA	2CRB						
MFT, FTB-10	70	154	132		610, 1219	152, 203	254, 305	543, 1153	595, 1205	
MFT, FTB-15	95	205	183		610, 1219	152, 203	254, 305	543, 1153	595, 1205	
MFT, FTB-20	121	256	233		610, 1219	152, 203	254, 305	543, 1153	595, 1205	
MFTI, FTBI-10	70	154	132		610, 1219	152, 203	254, 305	543, 1153	595, 1205	
MFTI, FTBI-15	95	205	183		610, 1219	152, 203	254, 305	543, 1153	595, 1205	
MFTI, FTBI-20	121	256	233		610, 1219	152, 203	254, 305	543, 1153	595, 1205	

Note: Pressure Vane is standard for 1219 and 1524 mm plenums only.

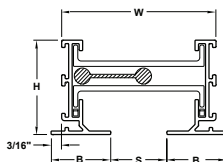
Optional FlowTee Border Types



Type 11



Type 13



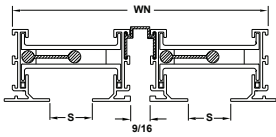
Type 33

Model	S Slot Width	W Width	A Border Width	B Border Width	H Height
MFTB, FTBI-10	25	70	22	27	43
MFTB, FTBI-15	38	95	29	33	43
MFTB, FTBI-20	51	121	35	40	43

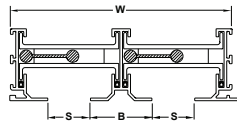
Accessories (Optional)

Check if provided

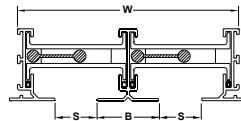
Optional Two Slot Units



2 CRN
33 Border



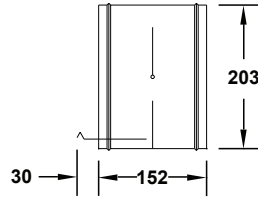
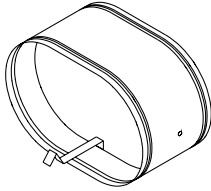
2 CRB
13 Border



2 CRA
33 Border

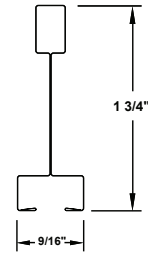
Model	S Slot Width	B Border	W Width	WN Width
MFTB, FTBI-10	25	37	132	154
MFTB, FTBI-15	38	49	183	205
MFTB, FTBI-20	51	62	233	256

Optional • FlowBar Inlet Damper



Note: Inlet dampers shipped loose

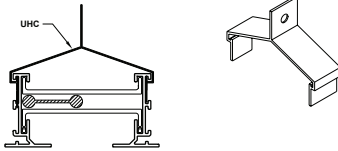
Bolt-Slot Suspension System



Hanger & Mounting Clips

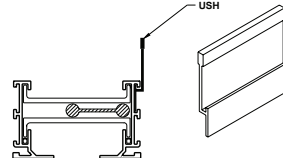
Check if provided

UHC - Upper Hanger Clip ①



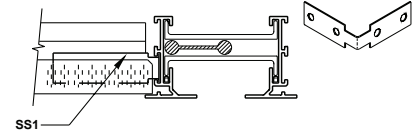
Suspends the FlowBar assembly from the ceiling structure using standard hanger wire.

USH - Upper Support Hanger ②



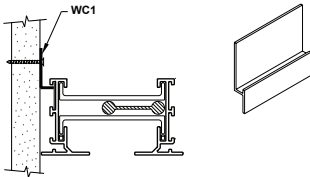
Suspends one side of the FlowBar assembly from the ceiling structure.

SS1 - Spline Support Clip ③ (field formed)



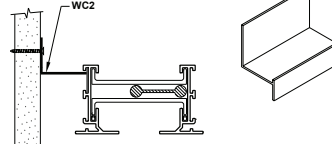
Integrates standard drop "Tees" with FlowBar assembly.

WC1 - Wall Clip ④



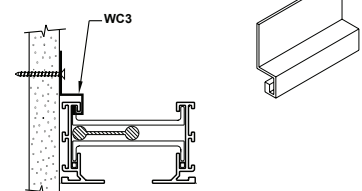
Used for flush mounting border types 33 or 13 to a wall.

WC2 - Wall Clip



Mounts border types 11, 33, or 13 away from a wall when a reveal is required. This reveal can be used as a return air slot.

WC3 - Wall Clip ⑤



Mounts border 11 or 13 flush to a wall.

Notes:

1. Use only for single slot systems. Required for 14 mm tee systems.

2. Used for multiple slot systems. Required for 14 mm 2 slot units.

3. Spline support clip is a connector clip bent at 90°.

4. Used for type 3 rail only.

5. Used for type 1 rail only.

Optional Blank-Offs:

- FBBO • 1219 mm Field cut

Standard Finish:

- #26 White border
- Flat Black interior

General Description

- Standard length of diffuser sections are 610, 1219 and 1524mm.
- Pattern controllers change direction of the air

flow. Maximum length is 610 mm. Pattern controllers are furnished in multiple sections for diffusers longer than 610 mm.

- Diffuser material is extruded aluminum.
- Plenum is steel.
- Patents #5,001,967 and # 5,215,284.



Note: This submittal is meant to demonstrate general dimensions of this product. The drawing on this submittal are not meant to detail every aspect of the product with exactness. Drawings are not to scale. TITUS reserves the right to make changes without written notice.
605 Shiloh Road • Plano, Texas 75074 • 972-212-4800

MFB-3.0-S