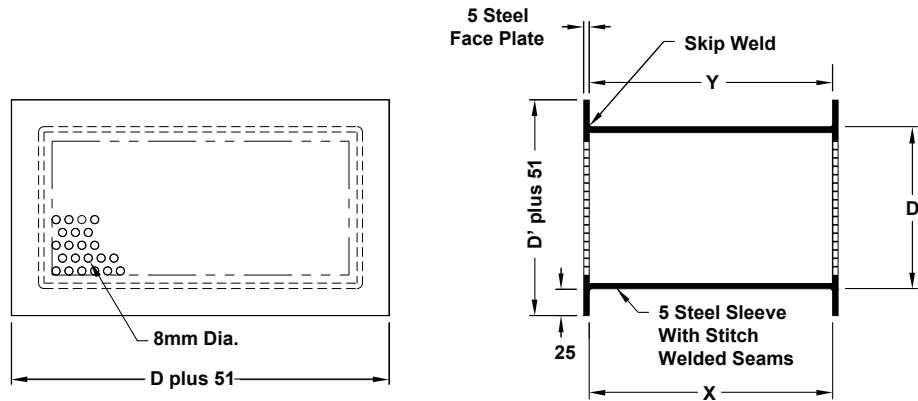


## Maximum Security Grilles and Registers

Model:  MSG-PRT • Steel Transfer Grille • Round Perforated

- Standard face and sleeve configuration as shown on the diagram below
- Alternate face and sleeve configuration as specified in the table below

X= \_\_\_mm to be specified



Note: Model MSG-PRT is available in square and rectangular neck sizes in one piece construction up to 1524 mm x 1168 mm. Larger sizes will be made in multiple sections for field welding together. Minimum X=102 mm.

All dimensions are in mm.

### Alternate Face and Sleeve Construction

Face Gauge	Sleeve Gauge	Face Configurations
<input type="checkbox"/> 6 mm thk. <input type="checkbox"/> 5 mm thk. <input type="checkbox"/> 10 ga. <input type="checkbox"/> 12 ga.	<input type="checkbox"/> 6 mm thk. <input type="checkbox"/> 5 mm thk. <input type="checkbox"/> 10 ga. <input type="checkbox"/> 12 ga.	<input type="checkbox"/> 5 mm Diameter holes on 6 mm staggered centers <input type="checkbox"/> 6 mm Diameter holes on 10 mm staggered centers <input type="checkbox"/> 8 mm Diameter holes on 11 mm staggered centers <input type="checkbox"/> 11 mm Diameter holes on 17 mm staggered centers

Note: Not all configurations are available with every face thickness. Check the chart at the bottom of this page for available combinations.

### Face Availability Chart

Face Gauge	Hole Diameter and Spacing*			
	5 mm x 6 mm	6 mm x 10 mm	8 mm x 11 mm	11 mm x 17 mm
6 mm	NA	NA	Y	Y
5 mm	NA	NA	Y	Y
10	NA	NA	Y	Y
12	Y	Y	Y	Y

\* All holes are staggered centers

## Options & Accessories

### Sleeve Barrier Grille

<input type="checkbox"/> <b>Steel Security Bars</b> <input type="checkbox"/> 13 mm Diameter <input type="checkbox"/> 19 mm Diameter <input type="checkbox"/> 22 mm Diameter <input type="checkbox"/> Other _____	<input type="checkbox"/> <b>Flat Bars</b> <input type="checkbox"/> 64 mm x 6 mm <input type="checkbox"/> 51 mm x 6 mm <input type="checkbox"/> 38 mm x 10 mm <input type="checkbox"/> 64 mm x 10 mm <input type="checkbox"/> Other _____
<input type="checkbox"/> <b>Spacing</b> <input type="checkbox"/> 152 mm on center <input type="checkbox"/> 102 mm on center <input type="checkbox"/> Other _____	<input type="checkbox"/> <b>Spacing</b> <input type="checkbox"/> 152 mm on center <input type="checkbox"/> 102 mm on center <input type="checkbox"/> Other _____

### Miscellaneous Options

<input type="checkbox"/> 38 mm border around face <input type="checkbox"/> 51 mm border around face
--

### General Description

• TITUS® model MSG-PRT is a maximum security grille. The design of this grille allows a greater effective free area and air flow without compromising security and safety. With the optional flat security bars, this grille meets or exceeds the ASTM standard A-750-77 for detection area grilles.

#### Standard Construction Detail

- Face plate: 5 mm steel with 8 mm diameter holes on 11 mm staggered centers.
- Sleeve: Standard unit has 5 mm steel sleeve stitch welded; length to be specified. Also available with optional 64 mm x 10 mm flat bars spaced on 102 mm centers, welded inside sleeve.
- All welded construction.

**Standard Finish: #26 White**



Note: This submittal is meant to demonstrate general dimensions of this product. The drawing on this submittal are not meant to detail every aspect of the product with exactness. Drawings are not to scale. TITUS reserves the right to make changes without written notice.

605 Shiloh Road • Plano, Texas 75074 • 972-212-4800

MSG-7.0-S