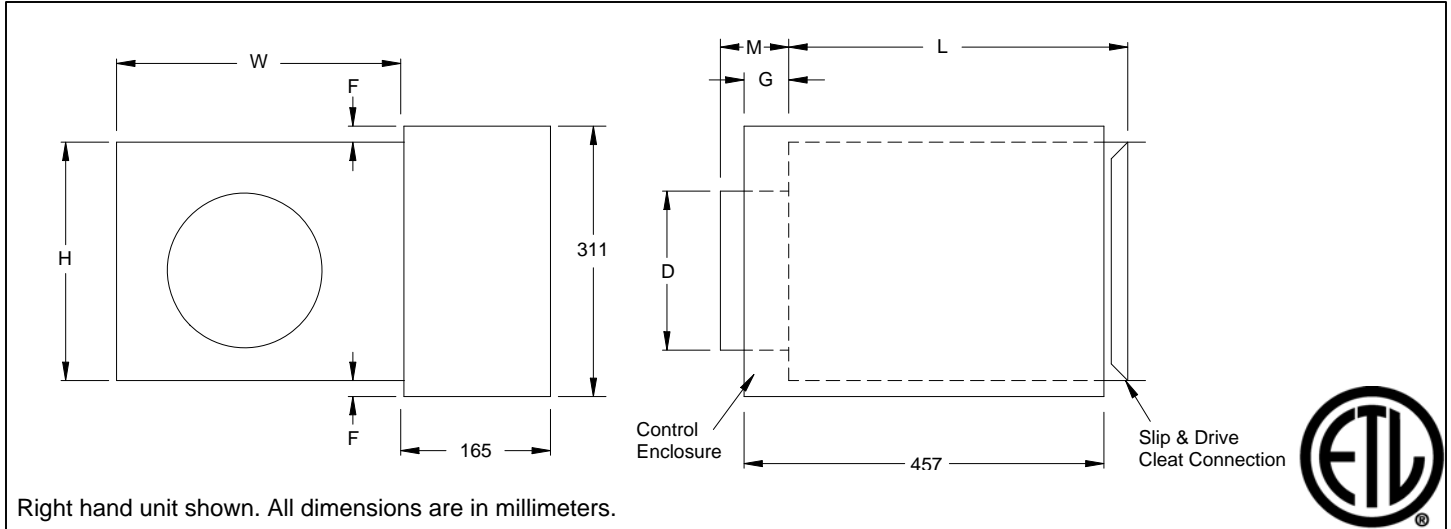


EESV

Single Duct Terminal Unit
Electric Control, Pressure Dependent



Inlet Size	l/s Range	D	F	G	H	L	M	W
4	0-106	98	54	187	203	394	137	305
5	0-165	124	54	187	203	394	137	305
6	0-236	149	54	187	203	394	86	305
7	0-307	175	29	187	254	394	86	305
8	0-425	200	29	187	254	394	86	305
9	0-496	225	-	137	318	394	86	356
10	0-661	251	-	137	318	394	86	356
12	0-944	302	-	137	381	394	86	406
14	0-1416	352	-	86	445	394	86	508
16	0-1888	403	-	86	457	394	86	610
24 x 16	0-3775	606 x 403	29	137	457	381	86	965

Accessories (Optional)

Check if provided.

- | | | | |
|--|--|---|--|
| <input type="checkbox"/> 24 V Control Transformer | <input type="checkbox"/> 12mm Fibre Free Liner | <input type="checkbox"/> SteriLoc Liner | <input type="checkbox"/> Disconnect Switch |
| <input type="checkbox"/> Dust Tight Enclosure Seal | <input type="checkbox"/> 25mm Fiberglass Liner | <input type="checkbox"/> UltraLoc Liner | <input type="checkbox"/> Hanger Brackets |
| <input type="checkbox"/> Fibre Free Liner | <input type="checkbox"/> 25mm EcoShield Liner | <input type="checkbox"/> 12mm EcoShield Liner (Foil Face) | <input type="checkbox"/> Removable Air Flow Sensor |
| <input type="checkbox"/> 12mm EcoShield Liner | <input type="checkbox"/> 25mm Fibre Free Liner | <input type="checkbox"/> 25mm EcoShield Liner (Foil Face) | <input type="checkbox"/> Bottom Access Door |

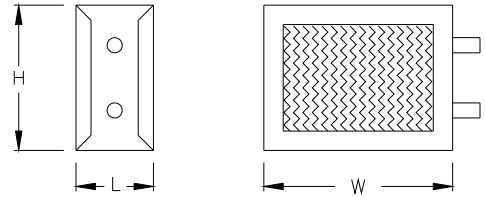
General Description

- Heavy gauge steel housing. Mechanically sealed and gasketed, leak resistant construction. Less than 2% of nominal l/s at 375 Pa.
- Dual density internal insulation, treated to resist air erosion. Meets requirements of NFPA 90A and UL 181.
- Rectangular discharge opening is designed for slip and drive cleat duct connection.
- Choice of right hand or left hand control location.
- Actuator must be stopped by its internal limit, never stalled by the damper.
- Must be used with SPDT "center off" type thermostat.

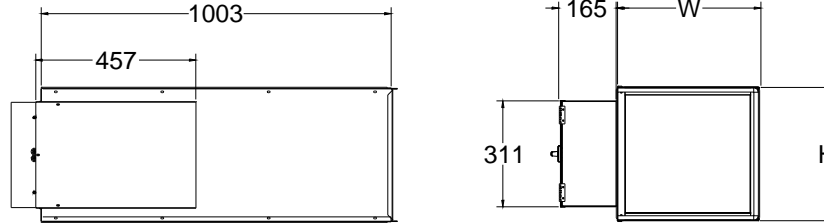
Accessories (Optional)

Hot Water Coil Section

- 13mm copper tubes
 - Aluminum ripple fins, 10 per inch
 - Connections: Single circuit, 13mm O.D. male solder. Multi-circuit, 22mm O.D., male solder.
 - Coil is installed at discharge of unit.
 - On units with attenuators, coil are installed at the discharge of attenuator.
- 1 Row
 - 2 Row
 - 3 Row
 - 4 Row

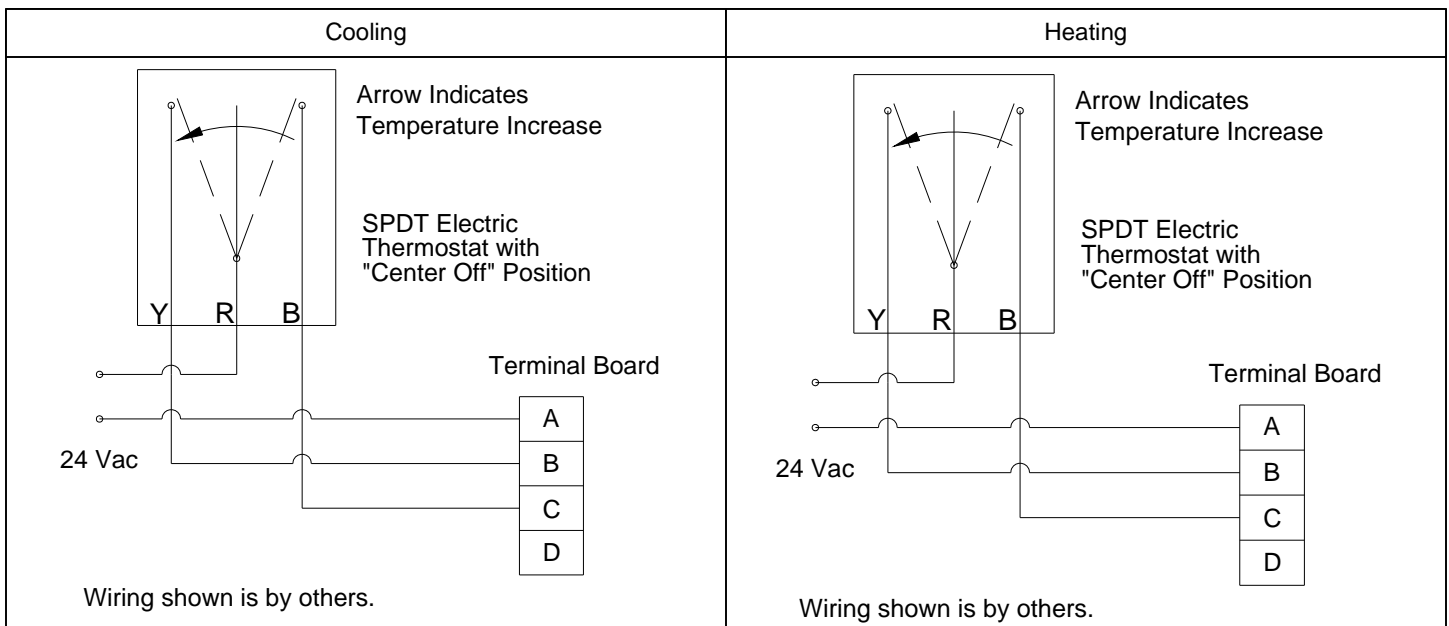


Integral Sound Attenuator



Inlet Size	H	W	Water Coil	
			L (1-2 Row)	L (3-4 Row)
4	203	305	127	184
5	203	305	127	184
6	203	305	127	184
7	254	305	127	184
8	254	305	127	184
9	318	356	127	184
10	318	356	127	184
12	381	406	127	184
14	445	508	191	248
16	457	610	191	248
24 x 16	457	965	127	184

The total length of the EESV unit is the summation of the unit length (with or without attenuator) and the length of the optional water coil.



This submittal is meant to demonstrate general dimensions of this product. The drawings are not meant to detail every aspect of the product. Drawings are not to scale. Titus reserves the right to make changes without written notice.