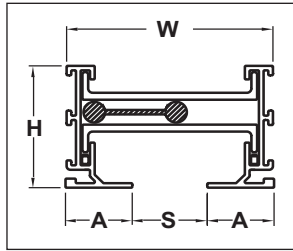
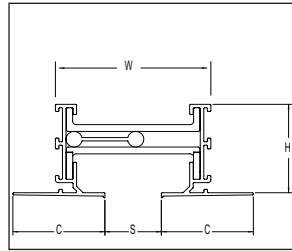


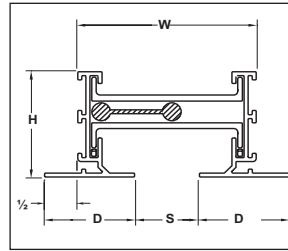
BORDER TYPES



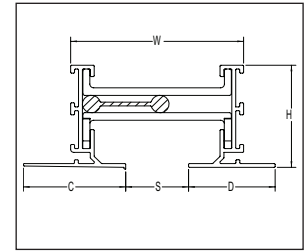
Border Type 11



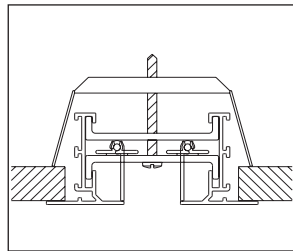
Border Type 22



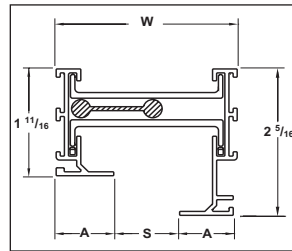
Border Type 66



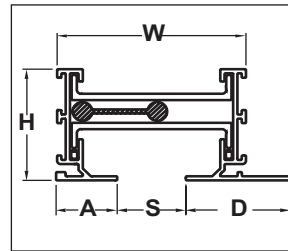
Border Type 26



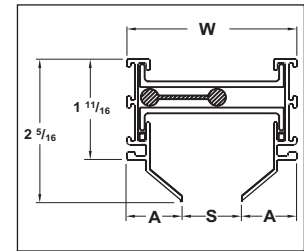
Border Type 77



Border Type 14*



Border Type 16



Border Type 55

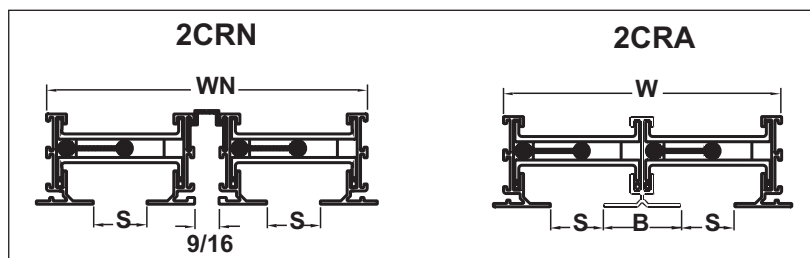
Border Type 77 (Concealed Fastening) uses Border Type 66 extrusions and adds a mounting bracket, a #10 x 2 1/2" screw and a hole in the spreader

Model	S Slot Width	W Width	A Border Width	C Border Width	D Border Width	H Height
FL-10	1	2 3/4	7/8	1 5/8	1 3/8	1 11/16
FL-15	1 1/2	3 3/4	1 1/8	1 7/8	1 5/8	1 11/16
FL-20	2	4 3/4	1 3/8	2 1/8	1 7/8	1 11/16
FL-25	2 1/2	5 3/4	1 5/8	2 1/8	2 1/8	2 5/16
FL-30	3	6 3/4	1 7/8	2 3/8	2 3/8	2 5/16

Dimensions are in inches * One-way blow only

FlowBar Model	Ceiling Opening Width for Border Type 77		
	1-Slot	2-Slot 2CRA	2-Slot 2CRN
FL-10	3	5 1/2	6 3/8
FL-15	4	7 1/2	8 3/8
FL-20	5	9 1/2	10 3/8
FL-25	6	11 1/2	12 3/8
FL-30	7	13 1/2	14 3/8

TWO-SLOT OPTIONS



Note: Not all border options are shown. For other border options, contact your Titus sales representative. For typical border applications see pages C12-C15.

Model	S Slot Width	B Border Width	W Width	WN Width
FL-10	1	1 7/16	5 3/16	6 1/16
FL-15	1 1/2	1 15/16	7 3/16	8 1/16
FL-20	2	2 1/16	9 3/16	10 1/16
FL-25	2 1/2	2 15/16	11 3/16	12 1/16
FL-30	3	3 1/16	13 3/16	14 1/16