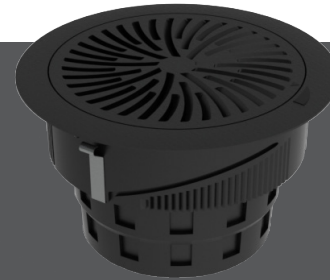


## UnderFloor Round Products

## underfloor air distribution

### TAF-R / TAF-R-FR

- Designed for applications in pressurized underfloor air distribution systems
- Constructed of a high impact, polymeric material, durable enough to resist foot traffic. Exceeds NFPA 90B requirements.
- External Open/Close indicator coupled with the internal Open/Close stop allow visual determination of damper position
- Architecturally appealing face design is available in standard gray or black color. Optional colors may be specified to match any building interior's color scheme.
- The trim ring's extra wide flange is designed to prevent carpet from pulling away from the diffuser
- Relocation to another area is simply by relocating that floor panel. Removal of the diffuser from the access floor panel is not required.
- Diffuser can be installed after flooring and carpet installation are complete
- Simply converts to a TAF-G without moving floor panels or trim and retainer ring
- TAF-R-FR is UL Listed and meets NFPA 90A



TAF-R / TAF-R-FR

- The spring clip attached to the trim ring is designed for rapid & secure press fit without the use of tools



fire rated



energy solutions

### AVAILABLE MODELS:

TAF-R  
TAF-R-FR

### FINISHES

Standard Finish - #84 Black or light gray  
Optional Finish - Custom colors may be specified to match building's interior color scheme

### OVERVIEW

The TAF-R is designed for application in underfloor air distribution systems. All components are constructed of a high-impact polymer material that is designed to resist damage from traffic. The TAF-R diffuser is also a GreenSpec Listed product and is available in standard light gray or black. Additional colors may be specified to match any building's interior scheme. This model can contribute toward achieving LEED Credits.

### ADVANTAGES

- The actuated option for the TAF-R & TAF-R-FR can have a maximum of six daisy chain units together utilizing the standard 12ft. plenum cable. This allows for a maximum of 12 units per power supply with six unit on each side of the power supply.
- High induction helical air pattern creates ideal circulation without excess inlet pressure requirements
- Removable flow regulator is manually operated without removing the core
- Dirt / dust collection receptacle can be easily removed for cleaning



See website for Specifications



TAF-R diffusers installed in a government facility